

# CERTIFICATE OF LOCATION OF GOVERNMENT CORNER

NORTHEAST Corner of Section 20, Township 38, Range 25, 4TH P.M.

STATE OF MINNESOTA, County of KANABEC

At the corner location shown on the sketch:  
FOUND MONUMENT  
AND ESTABLISHED G.P.S. COORDINATES ON ITS LOCATION.

Kanabec County U.S. Survey Feet Coordinates  
NAD 1983, HARN 1996 Adjustment  
Obtained by RTK GPS Observation

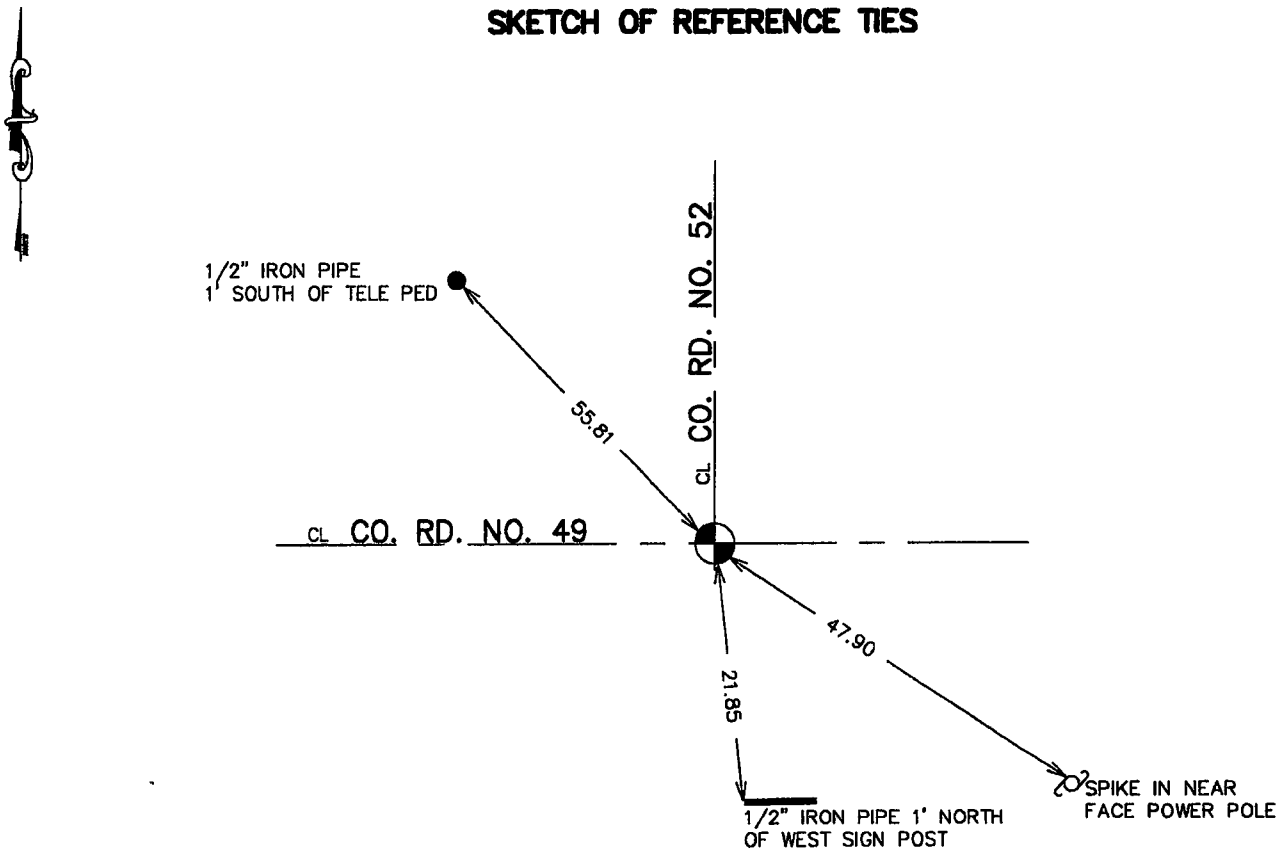
Northing= 117733.87

Easting= 353874.94

Note: NAD 1983, HARN 1996 Adjustment  
coordinates are NOT compatible with  
NAD 1983 coordinates

Note: 1 Meter=3937/1200 U.S. Survey Feet

## SKETCH OF REFERENCE TIES



Statement of evidence relative to this corner location is on back of page.

I hereby certify that this document and the data contained herein was prepared by me or under my direct supervision.

Ernst Lund  
Signature

9-11-2006  
Date

Registration No. Mini No 9808

Land Surveyor,  Professional Engineer

County Surveyor,  County Engineer

## OFFICE OF THE COUNTY RECORDER

County of Kanabec

I hereby certify that this document was filed in the County Recorder's office at 8:00 A M. on the

13<sup>th</sup> day of Sept A.D., 2006

County Recorder Rhonda Olson

BY \_\_\_\_\_ Deputy

DOCUMENT NO. \_\_\_\_\_

NORTHEAST CORNER SECTION 20, T38, R25

**STATEMENT OF EVIDENCE**

ALL OF THE ORIGINAL GOVERNMENT BEARING TREES ARE NOW GONE.

IN SEPTEMBER OF 1990, M.B. RUDE MADE A SURVEY AROUND SECTION 21, TOWNSHIP 38, RANGE 25, TO LOCATE THE EXISTING MONUMENTS, LINES OF OCCUPATION AND ESTABLISH SEARCH AREAS.

ON OCTOBER 3, 1990, A 2' BY 15' BY 15' EXCAVATION WAS MADE WITH A BACKHOE AND FOUND NO EVIDENCE. M.B. RUDE ACCEPTED THE CENTERLINE ROAD INTERSECTION, ROADS NORTH-EAST AND WEST, AND THE FIELD LINE SOUTH AS THE BEST AVAILABLE EVIDENCE OF THIS CORNER.

IN AUGUST 2006 E.G. RUD AND SONS RAN A SURVEY AROUND SECTION 20 AND FOUND THIS MONUMENT BENT. THE MONUMENT WAS RESET USING M.B. RUDS TIES AND KANABEC COUNTY COORDINATES ESTABLISHED ON THIS POSITION USING G.P.S. EQUIPMENT.