

CERTIFICATE OF LOCATION OF GOVERNMENT CORNER

EAST QUARTER Corner of Section 20, Township 38, Range 25, 4TH P.M.

STATE OF MINNESOTA, County of KANABEC

At the corner location shown on the sketch:

FOUND THIS MONUMENT
AND ESTABLISHED G.P.S. COORDINATES ON ITS LOCATION.

Kanabec County U.S. Survey Feet Coordinates
NAD 1983, HARN 1996 Adjustment
Obtained by RTK GPS Observation

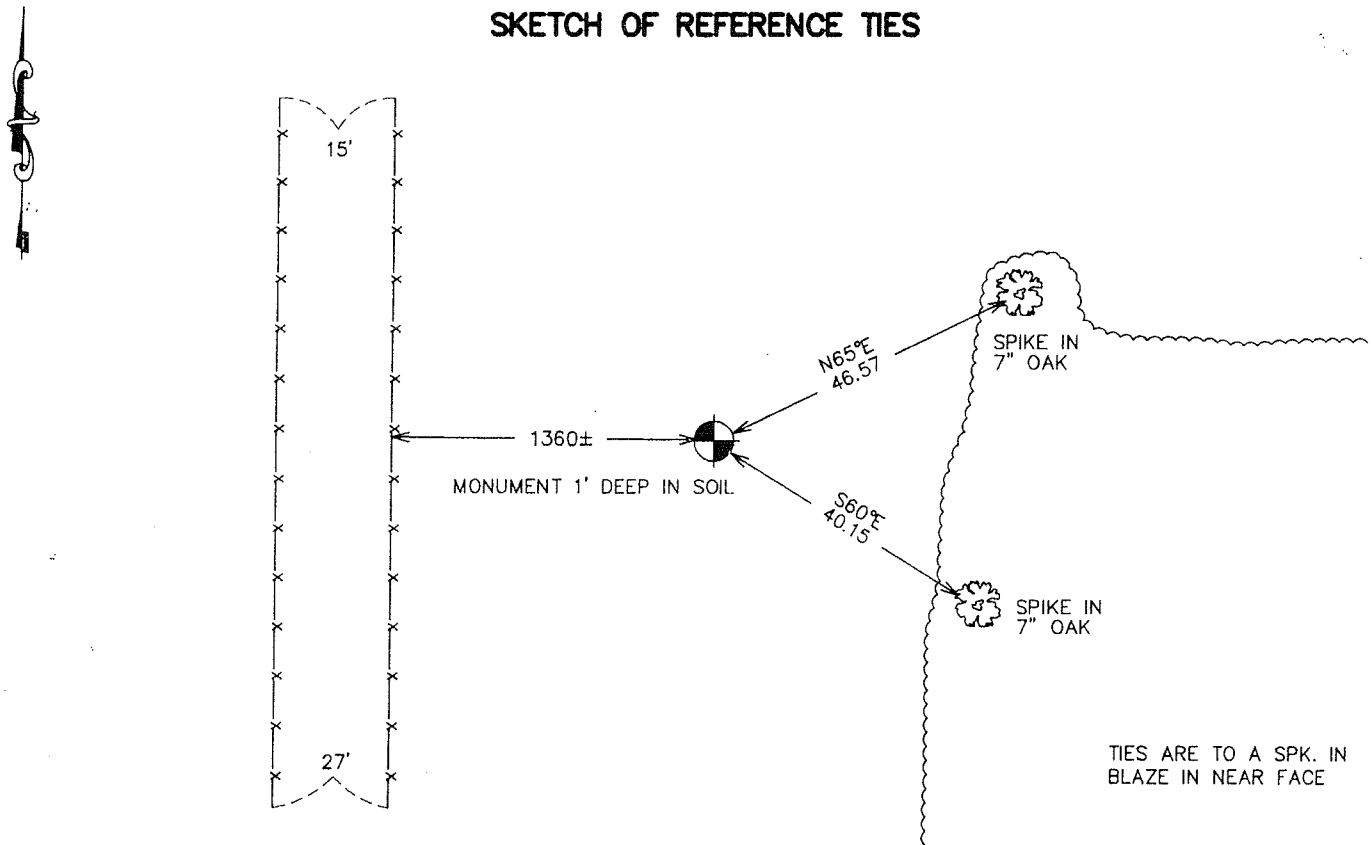
Northing= 115065.33

Easting= 353860.488

Note: NAD 1983, HARN 1996 Adjustment
coordinates are NOT compatible with
NAD 1983 coordinates

Note: 1 Meter=3937/1200 U.S. Survey Feet

SKETCH OF REFERENCE TIES



TIES ARE TO A SPK. IN
BLAZE IN NEAR FACE

Statement of evidence relative to this corner location is on back of page.

I hereby certify that this document and the data contained herein was prepared by me or under my direct supervision.

Ernest Blud
Signature

9-28-2006
Date

OFFICE OF THE COUNTY RECORDER

County of _____

I hereby certify that this document was filed in the County Recorder's office at _____ M. on the

_____ day of _____ A.D., 20____

County Recorder _____

BY _____ Deputy

DOCUMENT NO. _____

Registration No. Minn No 9808

Land Surveyor, Professional Engineer

County Surveyor, County Engineer

EAST QUARTER CORNER SECTION 20, T38, R25

STATEMENT OF EVIDENCE

ALL OF THE ORIGINAL GOVERNMENT BEARING TREES ARE NOW GONE.

IN SEPTEMBER OF 1990, M.B. RUDE MADE A SURVEY AROUND SECTION 21, TOWNSHIP 38, RANGE 25, TO LOCATE THE EXISTING MONUMENTS, LINES OF OCCUPATION AND ESTABLISH SEARCH AREAS.

ON OCTOBER 10, 1990, M.B. RUDE SET THIS CORNER ON LINE AND A PROPORTIONAL DISTANCE BETWEEN THE NORTHEAST CORNER OF SECTION 20, TOWNSHIP 38, RANGE 25 AND THE SOUTHEAST CORNER OF SECTION 20, TOWNSHIP 38, RANGE 25.

IN AUGUST 2006 ^{← E.G. Rude & Sons} MADE A SURVEY AROUND SECTIONS 16, 17, AND 18 AND LOCATED THIS MONUMENT. NEW TIES WERE TAKEN AND KANABEC COUNTY COORDINATES ESTABLISHED ON THIS CORNER USING G.P.S. EQUIPMENT.