

CERTIFICATE OF LOCATION OF GOVERNMENT CORNER

NORTH QUARTER Corner of Section 28, Township 38, Range 25, 4TH P.M.

STATE OF MINNESOTA, County of KANABEC

At the corner location shown on the sketch:
On 04/ /2004 Found a Kanabec County Monument.

Kanabec County U.S. Survey Feet Coordinates
NAD 1983, HARN 1996 Adjustment
Obtained by RTK GPS Observation

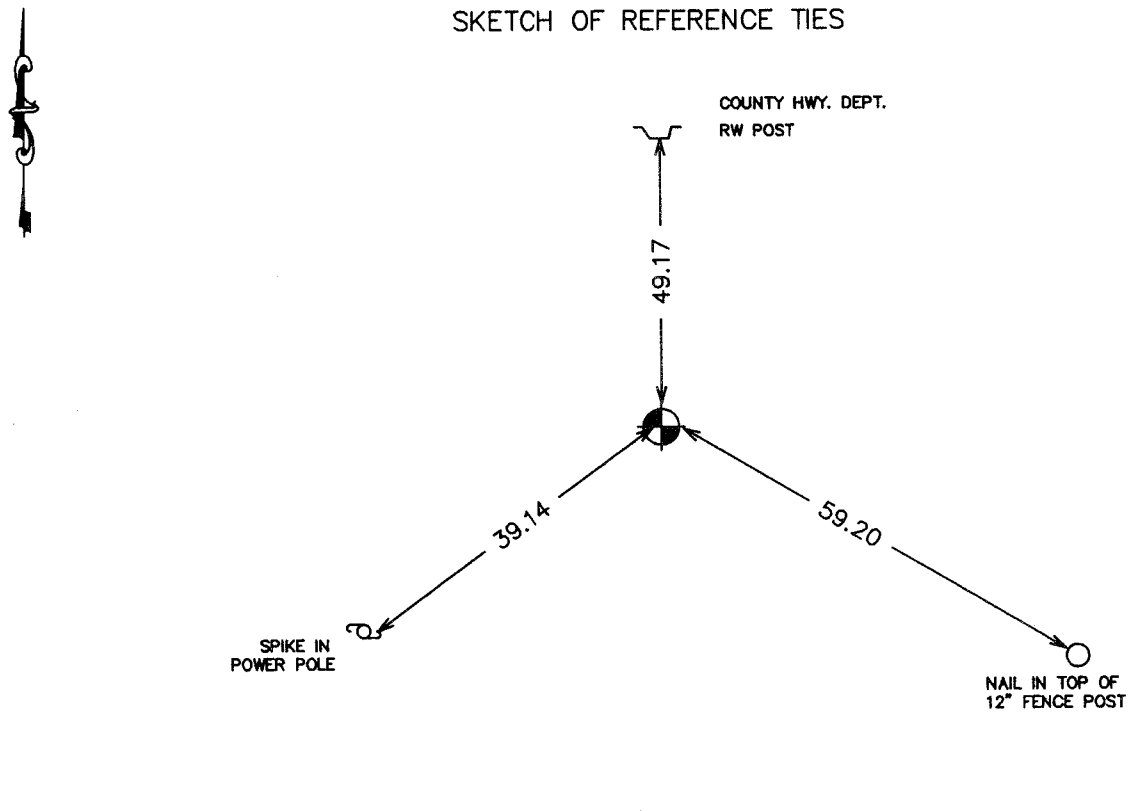
Northing= 112234.367

Easting= 356534.286

Note: NAD 1983, HARN 1996 Adjustment
coordinates are NOT compatible with
NAD 1983 coordinates

Note: 1 Meter=3937/1200 U.S. Survey Feet

SKETCH OF REFERENCE TIES



Statement of evidence relative to this corner location is on back of page.

I hereby certify that this document and the data contained herein was prepared by me or under my direct supervision.

Ernest Rud Signature 6-1-2004 Date

Registration No. 9808

Land Surveyor, [] Professional Engineer
[] County Surveyor, [] County Engineer

OFFICE OF THE COUNTY RECORDER

County of _____

I hereby certify that this document was filed in the County Recorder's office at _____ M. on the _____ day of _____ A.D., 20____

County Recorder _____

BY _____ Deputy

DOCUMENT NO. _____

STATEMENT OF EVIDENCE
(FROM M.B. Rude, TIE SHEET 388)

Set monument from 5/8" pin we found in excavation, which was set by Handschu in 1933 for corner.

M.B. Rude made a resurvey of county road #4 and in resurvey found that Handschu's pin was good for the corner.

(2004)

In April 2004, E.G. Rud ran a survey around Sections 26, 27, 28, 29, 34 and 35. We found the monument set by M.B. Rude. We established Kanabec County Coordinates on this location using G.P.S. equipment.