

CERTIFICATE OF LOCATION OF GOVERNMENT CORNER

EAST QUARTER Corner of Section 29, Township 38, Range 25, 4TH P.M.

STATE OF MINNESOTA, County of KANABEC

At the corner location shown on the sketch:
SET A #7 REBAR WITH AN ALUMINUM CAP

Kanabec County U.S. Survey Feet Coordinates
NAD 1983, HARN 1996 Adjustment
Obtained by RTK GPS Observation

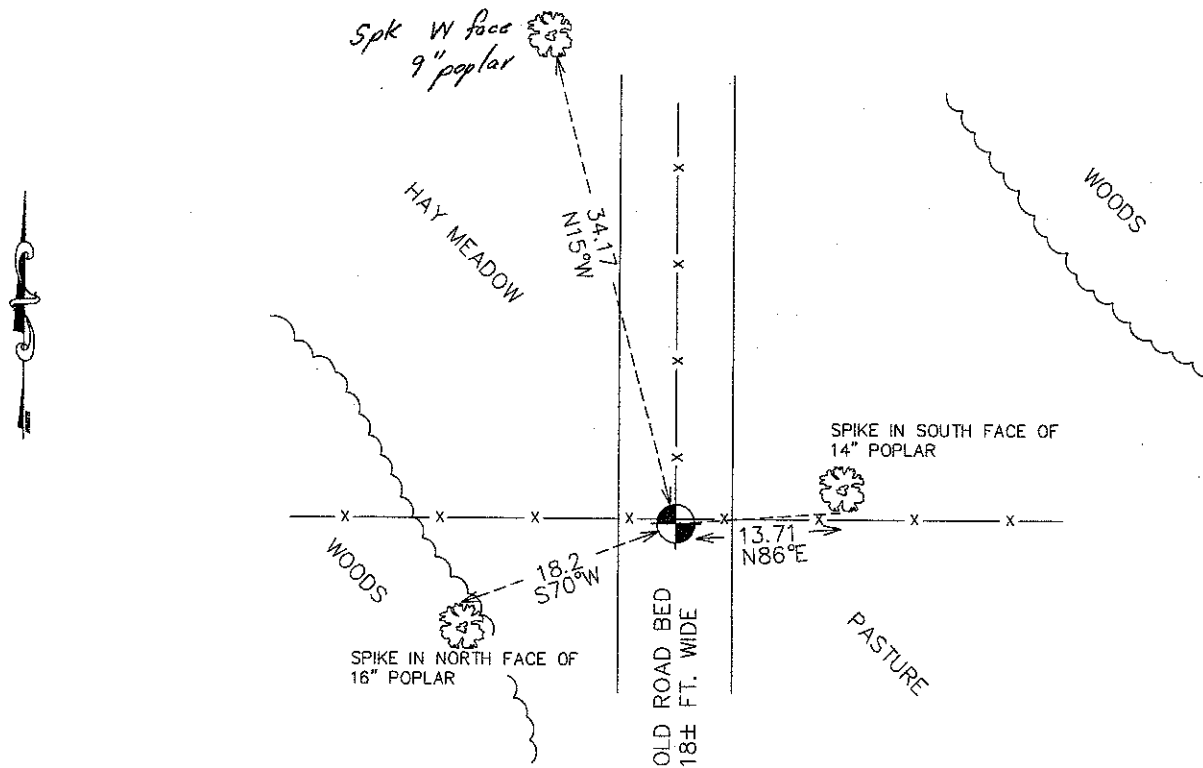
Northing= 109753.24

Easting= 353813.36

Note: NAD 1983, HARN 1996 Adjustment
coordinates are NOT compatible with
NAD 1983 coordinates

Note: 1 Meter=3937/1200 U.S. Survey Feet

SKETCH OF REFERENCE TIES



Statement of evidence relative to this corner location is on back of page.

I hereby certify that this document and the data contained herein was prepared by me or under my direct supervision.

Ermund [Signature]
Signature

11-26-2010
Date

Registration No. 9808

Land Surveyor, Professional Engineer

County Surveyor, County Engineer

OFFICE OF THE COUNTY RECORDER

County of _____

I hereby certify that this document was filed in the County Recorder's office at _____ M. on the _____ day of _____ A.D., 20 _____

County Recorder _____

BY _____ Deputy

DOCUMENT NO. _____

E1/4 CORNER, SEC. 29, T38, R25

STATEMENT OF EVIDENCE

THE ORIGINAL CORNER POST WAS SET BY DEPUTY SURVEYOR DANIEL HIGBEE ON NOV. 25, 1851 AND BEARING 2 TREES NOTED AS:

10" BLACK ASH @ 84 LINKS BEARING S65°W

4" ALDER @ 50 LINKS BEARING N63°W

NO VISIBLE EVIDENCE REMAINS OF THE CORNER OR THE BEARING TREES.

IN DEC. 1931, CHAS H. HANDSCHU DID A SURVEY IN SEC. 28 AND NOTED A POST IN THE CENTERLINE OF AN OLD ROAD BED AND A 6" FENCE POST 12.5 FEET TO THE WEST.

CLIFFORD GILLUND, OWNER OF THE E1/2 OF THE NE 1/4, AND I VISITIED THIS LOCATION ON JUNE 17, 2010. THERE ARE FENCES RUNNING NORTH, EAST AND WEST FROM THIS LOCATION. THIS FENCE CORNER IS ON THE CENTERLINE OF AN OLD ROAD BED RUNNING NORTH-SOUTH. WE SEARCHED 12± FEET WEST OF THIS FENCE CORNER AND COULD NOT FIND ANY EVIDENCE OF AN OLD POST. THEREFORE THIS FENCE WAS MOVED SINCE 1931 AND REINSTALLED AT THE SECTION CORNER. WE SET A #7 REBAR WITH AN ALUMINUM CAP ON THE SOUTH SIDE OF THE FENCE CORNER. THIS POSITION FITS AHNSCHU'S MEASUREMENT TO THE NE CORNER OF SEC. 29 WITHIN 0.8 FEET. TIES WERE TAKEN AND KANABEC COUNTY COORDINATES WERE ESTABLISHED ON THIS POSITION.