

CERTIFICATE OF LOCATION OF GOVERNMENT CORNER

EAST QUARTER Corner of Section 4, Township 38, Range 25, 4TH P.M.

STATE OF MINNESOTA, County of KANABEC

At the corner location shown on the sketch:
#7 REBAR WITH CAP SET
AND ESTABLISHED G.P.S. COORDINATES ON ITS LOCATION.

Kanabec County U.S. Survey Feet Coordinates
NAD 1983, HARN 1996 Adjustment
Obtained by RTK GPS Observation

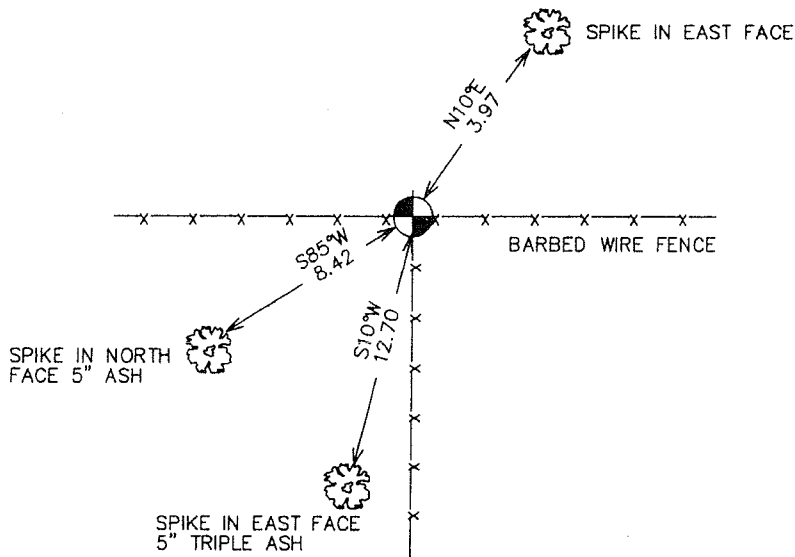
Northing= 130830.53

Easting= 359321.24

Note: NAD 1983, HARN 1996 Adjustment
coordinates are NOT compatible with
NAD 1983 coordinates

Note: 1 Meter=3937/1200 U.S. Survey Feet

SKETCH OF REFERENCE TIES



Statement of evidence relative to this corner location is on back of page.

I hereby certify that this document and the data contained herein was prepared by me or under my direct supervision.

Ernest J. Rud
Signature

9-28-2006
Date

OFFICE OF THE COUNTY RECORDER

County of _____

I hereby certify that this document was filed in the County Recorder's office at _____ M. on the

_____ day of _____ A.D., 20____

County Recorder _____

BY _____ Deputy

DOCUMENT NO. _____

Registration No. Minn No 9808

Land Surveyor, Professional Engineer

County Surveyor, County Engineer

EAST QUARTER CORNER SECTION 4, T38, R25

STATEMENT OF EVIDENCE

THE ORIGINAL CORNER WAS SET BY DEPUTY SURVEYOR DANIEL HIGBEE IN DECEMBER 1851. NO VISIBLE EVIDENCE REMAINS FOR THE ORIGINAL CORNER OR BEARING TREES. NO RECORDS OF ANY SUBSEQUENT SURVEYS COULD BE FOUND AT THE COUNTY OFFICE.

IN MAY 2006 E.G. RUD AND SONS RAN A SURVEY AROUND SECTION 3. THIS CORNER FALLS AT THE INTERSECTION OF A NORTH-SOUTH FENCE WITH AN EAST-WEST FENCE. TESTIMONY FROM LARRY PONTO (OWNER OF NORTH HALF OF SOUTHWEST QUARTER) STATED THAT ALL NEIGHBORS HAVE ALWAYS CONSIDERED THE FENCE CORNER TO BE THE QUARTER CORNER.

THIS POSITION ALSO FIT A PROPORTIONAL DISTANCE FROM THE NORTHEAST TO THE SOUTHEAST CORNER OF SECTION 4 WITHIN 0.9' OF A FOOT.

THEREFORE A #7 REBAR WAS SET WITH AN ALUMINUM CAP WAS SET, TIES TAKEN AND KANABEC COUNTY COORDINATES ESTABLISHED USING G.P.S EQUIPMENT.