

CERTIFICATE OF LOCATION OF GOVERNMENT CORNER

NORTH 1/4 Corner of Section 10, Township 38, Range 25, 4TH P.M.

STATE OF MINNESOTA, County of KANABEC

At the corner location shown on the sketch:
In July 2005 found a 7/8" x 18" capped rebar.

Kanabec County U.S. Survey Feet Coordinates
NAD 1983, HARN 1996 Adjustment
Obtained by RTK GPS Observation

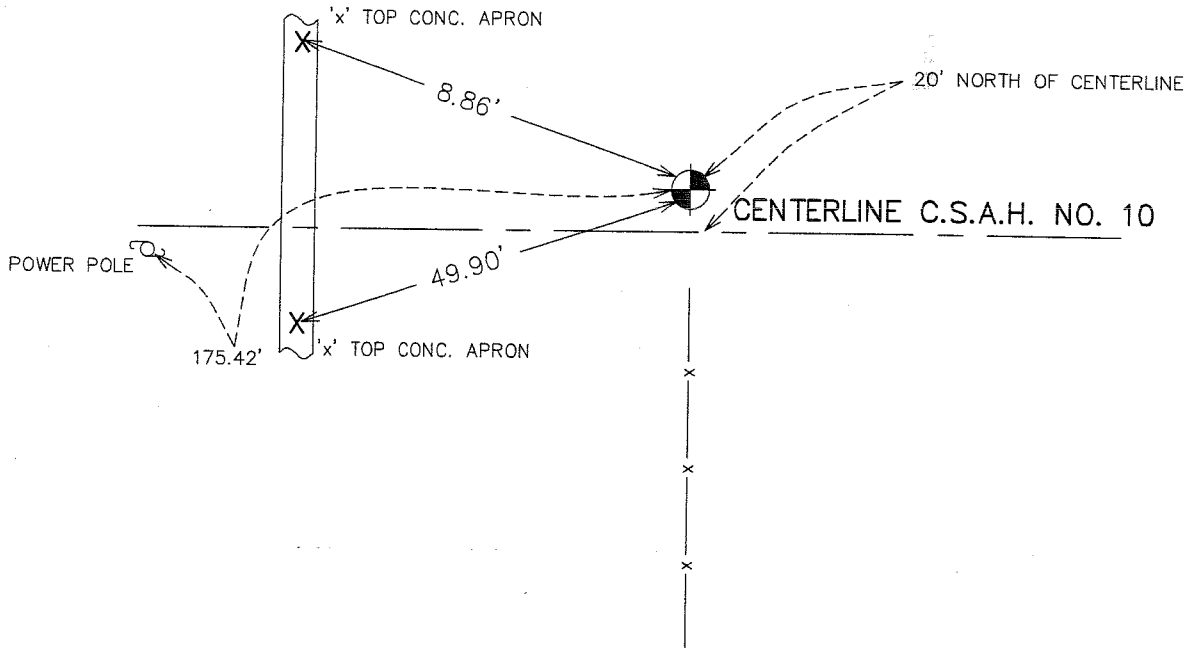
Northing= 127979.77

Easting= 361939.08

Note: NAD 1983, HARN 1996 Adjustment
coordinates are NOT compatible with
NAD 1983 coordinates

Note: 1 Meter=3937/1200 U.S. Survey Feet

SKETCH OF REFERENCE TIES



Statement of evidence relative to this corner location is on back of page.

I hereby certify that this document and the data contained herein was prepared by me or under my direct supervision.

Ernest Rud
Signature

10-17-2005
Date

Registration No. Minn No 9808

- Land Surveyor, Professional Engineer
- County Surveyor, County Engineer

OFFICE OF THE COUNTY RECORDER

County of _____

I hereby certify that this document was filed in the County Recorder's office at _____ M. on the

_____ day of _____ A.D., 20__

County Recorder _____

BY _____ Deputy

DOCUMENT NO. _____

STATEMENT OF EVIDENCE FROM TIE SHEET ~~802~~ 802 A

ALL REFERENCE TIES WERE INTACT.

THE ROADWAY WAS REGARDED IN 1992. M. B. RUDE LOCATED THE QUARTER CORNER PRIOR TO CONSTRUCTION AND PLACED ADDITIONAL REFERENCES OUTSIDE OF THE NEW CONSTRUCTION LIMITS.

BEFORE THE ROADWAY WAS PAVED IN 1993, THE CORNER WAS REESTABLISHED ACCORDING TO REFERENCES OBTAINED PREVIOUSLY. ADDITIONAL REFERENCES WERE ALSO PLACED.

IN JULY 2005 WE FOUND THIS CORNER, CHECKED AND TOOK ADDITIONAL TIES IF AVAILABLE AND SET KANABEC COUNTY COORDINATES ON THIS POSITION.