

CERTIFICATE OF LOCATION OF GOVERNMENT CORNER

N.E. Corner of Section 9, Township 38, Range 25, 4TH P.M.

STATE OF MINNESOTA, County of KANABEC

At the corner location shown on the sketch:
In July 2005 found a 7/8" X 24" capped rebar.

Kanabec County U.S. Survey Feet Coordinates
NAD 1983, HARN 1996 Adjustment
Obtained by RTK GPS Observation

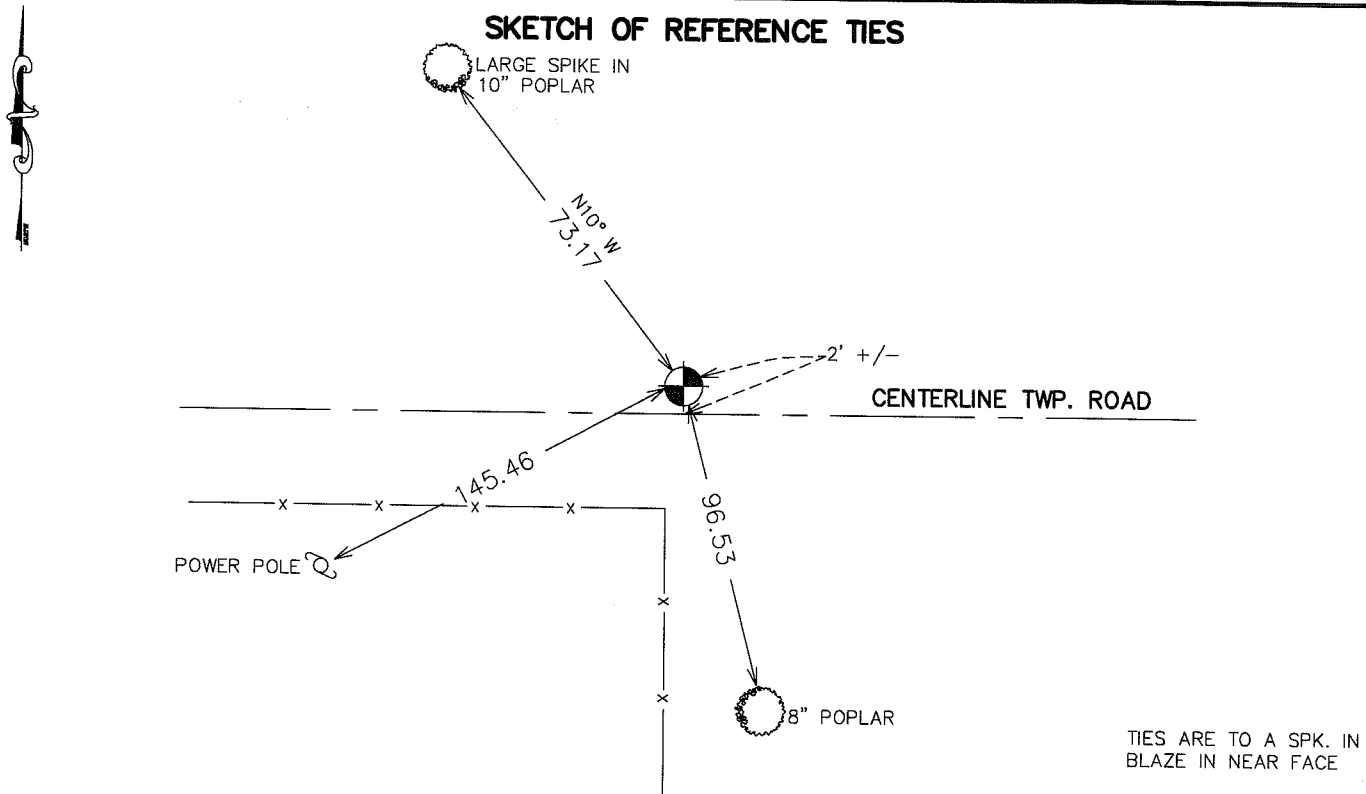
Northing= 128159.48

Easting= 359258.16

Note: NAD 1983, HARN 1996 Adjustment
coordinates are NOT compatible with
NAD 1983 coordinates

Note: 1 Meter=3937/1200 U.S. Survey Feet

SKETCH OF REFERENCE TIES



TIES ARE TO A SPK. IN
BLAZE IN NEAR FACE

Statement of evidence relative to this corner location is on back of page.

I hereby certify that this document and the data contained herein was prepared by me or under my direct supervision.

Ernest J. Reed
Signature

9-19-05
Date

Registration No. 9808

Land Surveyor, Professional Engineer

County Surveyor, County Engineer

OFFICE OF THE COUNTY RECORDER

County of _____

I hereby certify that this document was filed in the County Recorder's office at _____ M. on the _____ day of _____ A.D., 20 _____

County Recorder _____

BY _____ Deputy

DOCUMENT NO. _____

STATEMENT OF EVIDENCE FROM TIE SHEET 798

ALL OF THE ORIGINAL BEARING TREES ARE NOW GONE.

THERE IS NO RE-SURVEY DATA ON FILE FOR THIS CORNER.

IN JULY OF 1989, M. B. RUDE MADE A SURVEY ALONG THE SOUTH AND EAST LINES OF SECTION 3, TOWNSHIP 38, RANGE 25, TO LOCATE THE LINES OF OCCUPATION AND TO SEARCH NEW AREAS.

THERE IS AN EAST-WEST ROAD AND FENCE LINE SOUTH AT THIS CORNER LOCATION.

ON JULY 20, 1989, M. B. RUDE MADE AN EXCAVATION WITH A BACKHOE AT THE ROAD AND FENCE LINE LOCATION. AT 3' BELOW THE SURFACE WE FOUND A SANDSTONE WITH A "+" CUT IN IT.

IN JULY 2005 WE LOCATED THIS CORNER CHECKED TIE INFORMATION AND TOOK ADDITIONAL TIES IF AVAILABLE AND ESTABLISHED KANABEC COUNTY COORDINATES ON THIS POSITION.