

CERTIFICATE OF LOCATION OF GOVERNMENT CORNER

EAST QUARTER Corner of Section 9, Township 38, Range 25, 4TH P.M.

STATE OF MINNESOTA, County of KANABEC

At the corner location shown on the sketch:

SET #7 REBAR WITH ALUMINUM CAP
AND ESTABLISHED KANABEC COUNTY COORDINATES ON ITS LOCATION.

Kanabec County U.S. Survey Feet Coordinates
NAD 1983, HARN 1996 Adjustment
Obtained by RTK GPS Observation

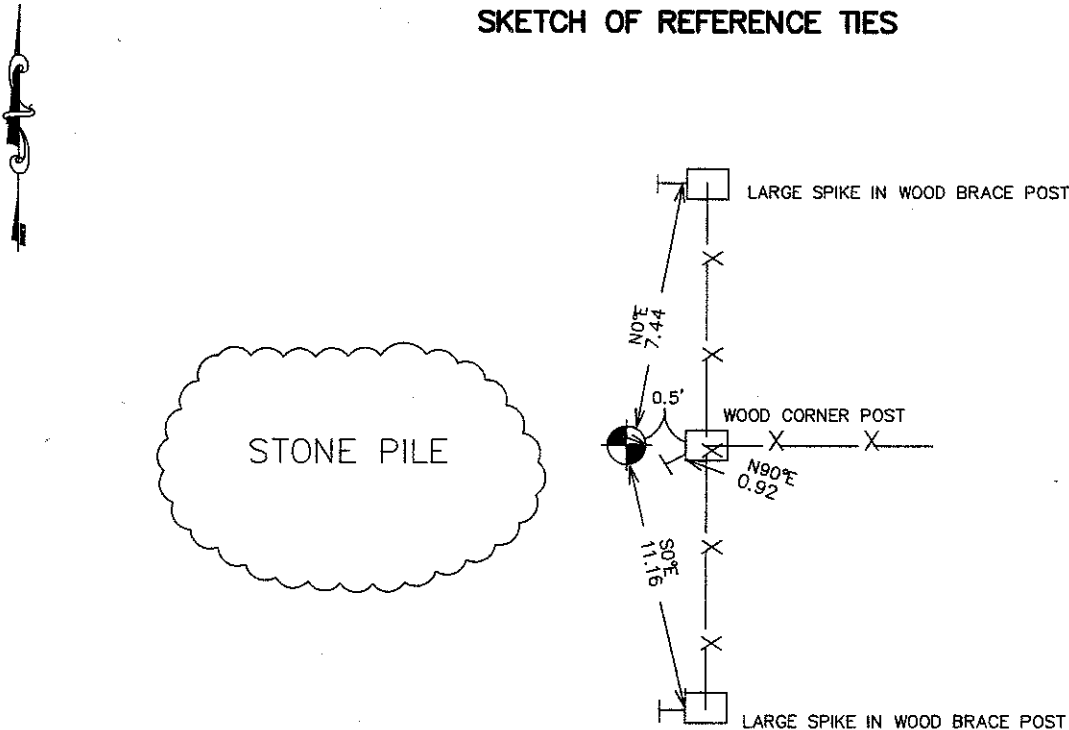
Northing= 125479.72

Easting= 359253.32

Note: NAD 1983, HARN 1996 Adjustment
coordinates are NOT compatible with
NAD 1983 coordinates

Note: 1 Meter=3937/1200 U.S. Survey Feet

SKETCH OF REFERENCE TIES



Statement of evidence relative to this corner location is on back of page.

I hereby certify that this document and the data contained herein was prepared by me or under my direct supervision.

Ernest G. Rud
Signature

2-04-2008
Date

Registration No. 9808

Land Surveyor, Professional Engineer
 County Surveyor, County Engineer

OFFICE OF THE COUNTY RECORDER

County of _____

I hereby certify that this document was filed in the County Recorder's office at _____ M. on the

_____ day of _____ A.D., 20__

County Recorder _____

BY _____ Deputy

DOCUMENT NO. _____

EAST QUARTER CORNER SECTION 9, T38, R25

STATEMENT OF EVIDENCE

THE ORIGINAL CORNER POST WAS SET BY DEPUTY SURVEYOR HIGBEE ON NOVEMBER 27, 1851 AND TWO BEARING TREES ESTABLISHED. NO VISIBLE EVIDENCE REMAINS FOR THE CORNER OR BEARING TREES. NO RECORDS OF ANY SUBSEQUENT SURVEYS COULD BE FOUND AT THE KANABEC COUNTY OFFICES.

IN OCTOBER 7, 2007 E.G. RUD AND SONS RAN A SURVEY AROUND SECTION 9 TO LOCATE EXISTING MONUMENTATION, LINES OF OCCUPATION AND SEARCH AREAS. THIS CORNER FALLS AT THE INTERSECTION OF A NORTH-SOUTH FENCE AND A FENCE LINE RUNNING EAST. THE FENCE CORNER FITS WITHIN A FOOT AND A HALF NORTH-SOUTH AND A HALF FOOT EAST-WEST FROM A LINE AND SPLIT. THIS FENCE CORNER WAS ACCEPTED AS THE BEST EVIDENCE FOR THE PERPETUATION OF THIS CORNER. A #7 REBAR WITH AN ALUMINUM CAP WAS SET, TIES TAKEN AND KANABEC COUNTY COORDINATES ESTABLISHED ON THIS POSITION.