

CERTIFICATE OF LOCATION OF GOVERNMENT CORNER

NORTH QUARTER Corner of Section 15, Township 38, Range 25, 4TH P.M.

STATE OF MINNESOTA, County of KANABEC

At the corner location shown on the sketch:
 FOUND STONE IN SWAMP AND SET 1/2" BY 4' IRON PIPE
 0.6 FEET EAST OF STONE FOR REFERENCE MONUMENT

Kanabec County U.S. Survey Feet Coordinates
 NAD 1983, HARN 1996 Adjustment
 Obtained by RTK GPS Observation

Northing= 122634.045

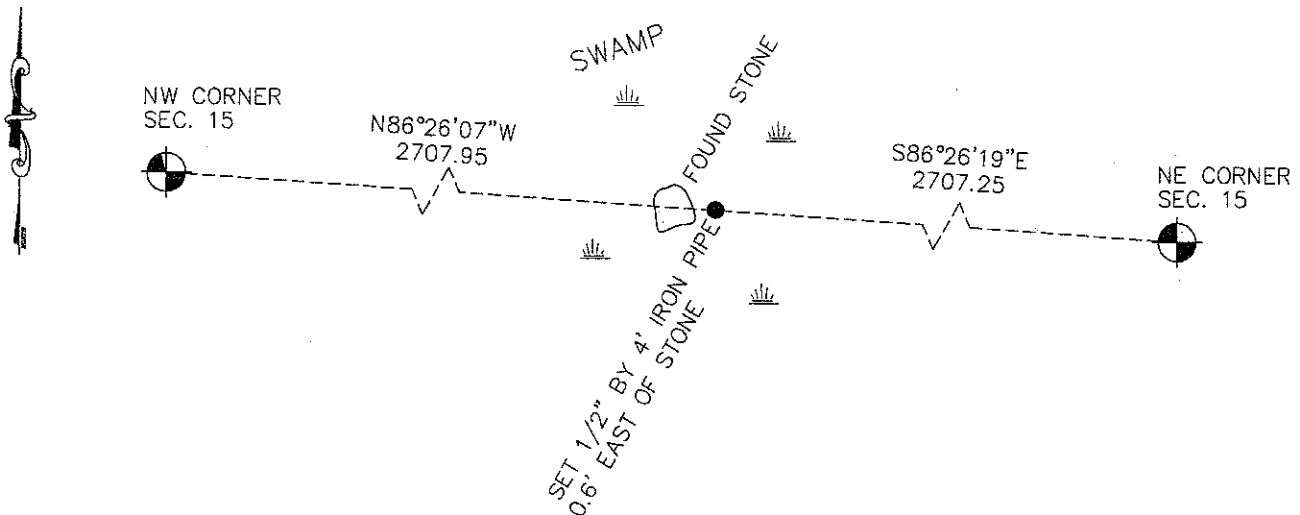
Easting= 361948.264

Note: NAD 1983, HARN 1996 Adjustment
 coordinates are NOT compatible with
 NAD 1983 coordinates

Note: 1 Meter=3937/1200 U.S. Survey Feet

SKETCH OF REFERENCE TIES

NO TIES AVAILABLE



Statement of evidence relative to this corner location is on back of page.

I hereby certify that this document and the data contained herein was prepared by me or under my direct supervision.

Ernest J. Reed
 Signature

11-26-2010
 Date

Registration No. 9808

- Land Surveyor, Professional Engineer
 County Surveyor, County Engineer

OFFICE OF THE COUNTY RECORDER

County of _____

I hereby certify that this document was filed in the County Recorder's office at _____ M. on the

_____ day of _____ A.D., 20__

County Recorder _____

BY _____ Deputy

DOCUMENT NO. _____

N1/4 CORNER, SEC. 15, T38, R25

STATEMENT OF EVIDENCE

ON NOV. 19, 1951, THE ORIGINAL GOV'T CORNER WAS SET BY DEPUTY SURVEYOR DANIEL HIGBEE. BEARING TREES ESTABLISHED AS NOTED:

14" TAMARACK @ 53 LINKS BEARING N42°30'W

8" TAMARACK @ 49 LINKS BEARING S48°E

NO VISIBLE EVIDENCE REMAINS OF THE CORNER OR THE BEARING TREES.

SURVEY RECORDS AT KANABEC COUNTY WERE SEARCHED BY ^{WT} NO RECORDS OF ANY SUBSEQUENT SURVEYS COULD BE FOUND.

THERE WERE NO ROAD OPENINGS ON FILE AT THE KANABEC COUNTY AUDITOR'S OFFICE.

THIS CORNER FALLS IN A SWAMPY AREA.

IN NOV. 2008 E,G, RUD AND SONS, INC. RAN A SURVEY ALONG THIS LINE AND COMPUTED A LOST POSITION FOR THIS CORNER. BY HAND PROBING IN THE SWAMP A STONE WAS FOUND WITHIN 0.35 FEET OF THIS LOST POSITION. THE STONE WAS ACCEPTED AS THE BEST EVIDENCE FOR THIS CORNER. A 1/2" BY 4' IRON PIPE WAS SET 0.6 FEET EAST OF THE STONE. NO TIES WERE ABLE TO BE OBTAINED. KANABEC COUNTY COORDINATES WERE ESTABLISHED ON THIS POSITION.