

CERTIFICATE OF LOCATION OF GOVERNMENT CORNER

NORTHEAST Corner of Section 16, Township 38, Range 25, 4TH P.M.

STATE OF MINNESOTA, County of KANABEC

At the corner location shown on the sketch:

SET THIS MONUMENT
AND ESTABLISHED G.P.S. COORDINATES ON ITS LOCATION.

Kanabec County U.S. Survey Feet Coordinates
NAD 1983, HARN 1996 Adjustment
Obtained by RTK GPS Observation

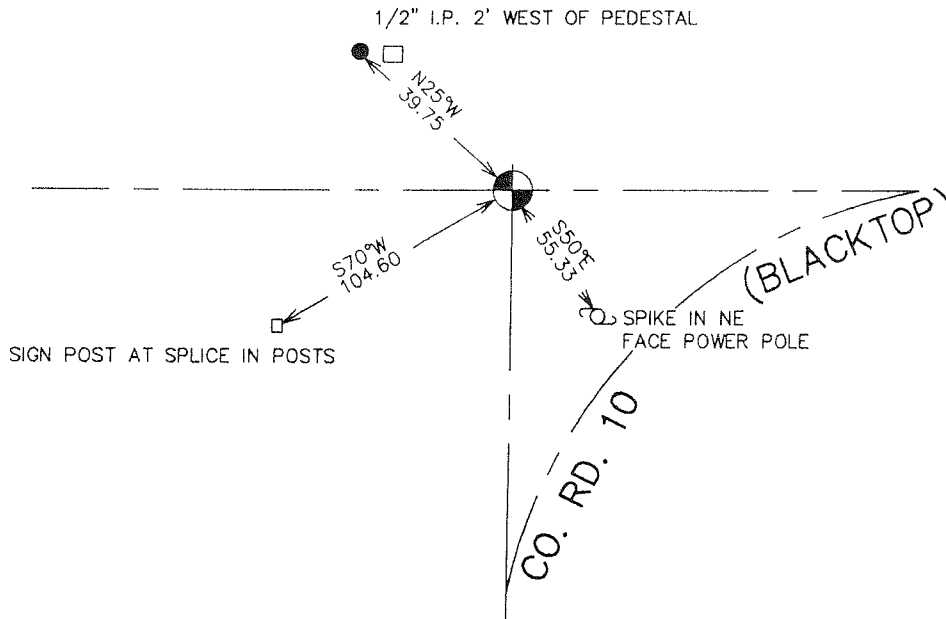
Northing= 122802.32

Easting= 359247.55

Note: NAD 1983, HARN 1996 Adjustment
coordinates are NOT compatible with
NAD 1983 coordinates

Note: 1 Meter=3937/1200 U.S. Survey Feet

SKETCH OF REFERENCE TIES



Statement of evidence relative to this corner location is on back of page.

I hereby certify that this document and the data contained herein was prepared by me or under my direct supervision.

Ernest J. Rud
Signature

10-12-2006
Date

Registration No. Minn No 9808

- Land Surveyor, Professional Engineer
- County Surveyor, County Engineer

OFFICE OF THE COUNTY RECORDER

County of _____

I hereby certify that this document was filed in the County Recorder's office at _____ M. on the

_____ day of _____ A.D., 20__

County Recorder _____

BY _____ Deputy

DOCUMENT NO. _____

NORTHEAST CORNER SECTION 16, T38, R23

STATEMENT OF EVIDENCE

THE ORIGINAL GOVERNMENT CORNER WAS SET BY U.S. DEPUTY SURVEYOR DANIEL HIGBEE ON NOVEMBER 19, 1851. A POST WAS SET AND TWO WHITE BIRCH TREES USED AS BEARING TREES. NO VISIBLE EVIDENCE OF THE CORNER OR BEARING TREES REMAIN.

THERE IS A ROAD OPENING ON FILE AT THE COUNTY AUDITORS OFFICE DATED JULY 23, 1897. VICKEREY SURVEYED THIS ROAD BUT DOESN'T STATE WHAT WAS SET FOR A CORNER. NO OTHER RECORDS OF SUBSEQUENT SURVEYS COULD BE FOUND.

IN AUGUST 2006 E.G. RUD AND SONS RAN A SURVEY AROUND SECTIONS 16-21 TO LOCATE EXISTING MONUMENTATION TIE IN LINES OF OCCUPATION AND DETERMINE SEARCH AREAS. THIS CORNER FALLS AT THE INTERSECTION OF AN EAST-WEST GRAVEL ROAD WITH A GRAVEL ROAD RUNNING SOUTH.

ON SEPTEMBER 5, 2006 AN EXCAVATION 20' EAST-WEST BY 8' NORTH-SOUTH AND 1 FOOT INTO NATURAL GROUND WAS DUG WITH A BACKHOE. NO EVIDENCE WAS FOUND TO HELP ESTABLISH THE POSITION OF THIS CORNER.

THEREFORE THE INTERSECTION OF THE TWO ROADS WAS USED AS THE LOCATION FOR THIS CORNER. A #7 REBAR WAS SET WITH AN ALUMINUM CAP, REFERENCE TIES TAKEN AND KANABEC COUNTY COORDINATES ESTABLISHED USING G.P.S. EQUIPMENT.