

# CERTIFICATE OF LOCATION OF GOVERNMENT CORNER

NORTHEAST Corner of Section 21, Township 38, Range 25, 4TH P.M.

STATE OF MINNESOTA, County of KANABEC

At the corner location shown on the sketch:  
FOUND MONUMENT  
AND ESTABLISHED G.P.S. COORDINATES ON ITS LOCATION.

Kanabec County U.S. Survey Feet Coordinates  
NAD 1983, HARN 1996 Adjustment  
Obtained by RTK GPS Observation

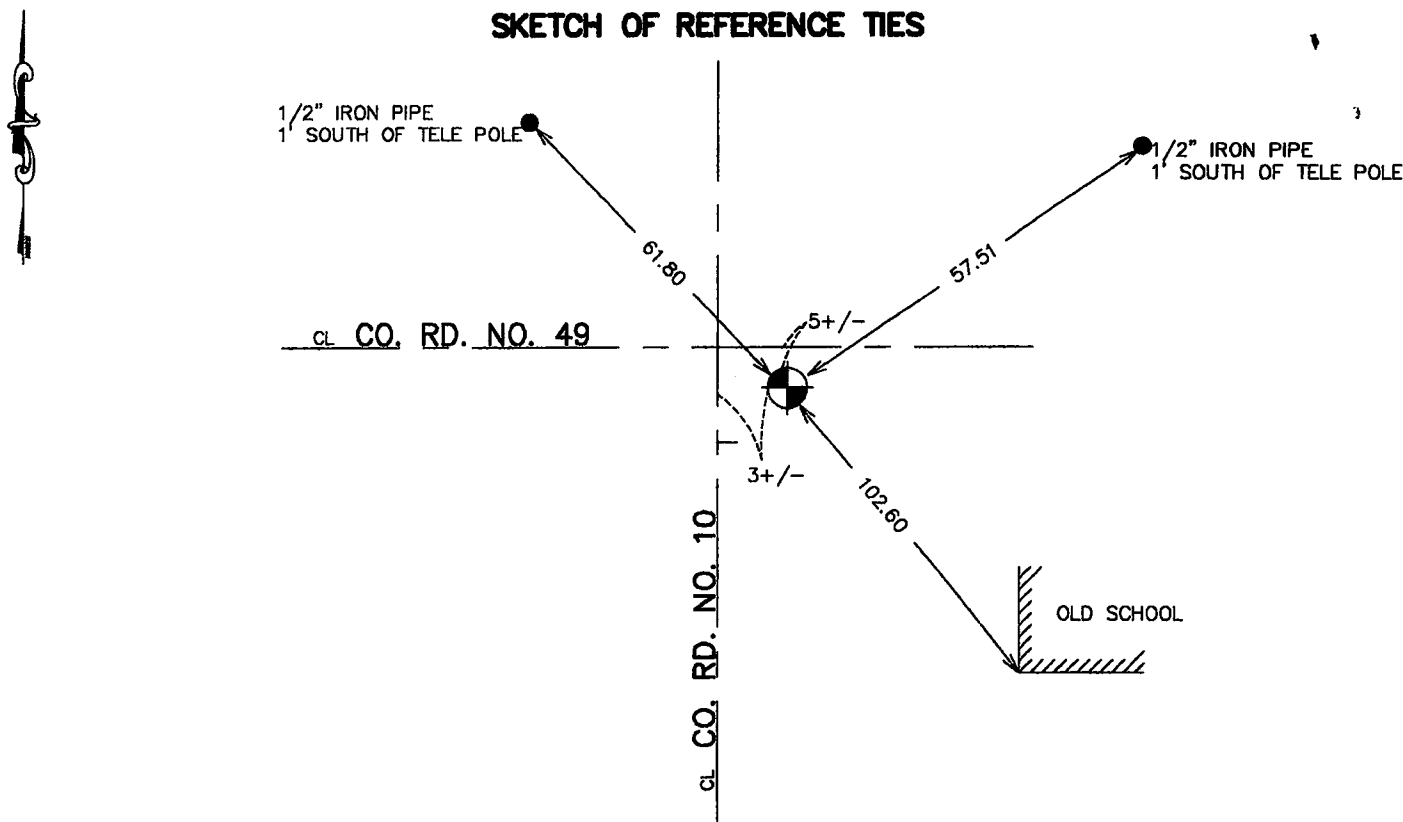
Northing= 117460.68

Easting= 359226.05

Note: NAD 1983, HARN 1996 Adjustment  
coordinates are NOT compatible with  
NAD 1983 coordinates

Note: 1 Meter=3937/1200 U.S. Survey Feet

### SKETCH OF REFERENCE TIES



Statement of evidence relative to this corner location is on back of page.

I hereby certify that this document and the data contained herein was prepared by me or under my direct supervision.

Ernest L. Rud 9-11-2006  
Signature Date

Registration No. Miss No 9808

Land Surveyor,  Professional Engineer

County Surveyor,  County Engineer

### OFFICE OF THE COUNTY RECORDER

County of Kanabec

I hereby certify that this document was filed in the County Recorder's office at 8:00 A M. on the

13<sup>th</sup> day of Sept A.D., 2006

County Recorder Rhonda Olson

BY \_\_\_\_\_ Deputy

DOCUMENT NO. \_\_\_\_\_

NORTHEAST CORNER SECTION 21, T38, R25

**STATEMENT OF EVIDENCE**

ALL OF THE ORIGINAL GOVERNMENT BEARING TREES ARE NOW GONE.

IN SEPTEMBER OF 1990, M.B. RUDE MADE A SURVEY AROUND SECTION 21, TOWNSHIP 38, RANGE 25, TO LOCATE THE EXISTING MONUMENTS, LINES OF OCCUPATION AND ESTABLISH SEARCH AREAS.

ON SEPTEMBER 27, 1990, M.B. RUDE FOUND A 2" BY 3" SQUARE IRON BAR 16" BELOW THE ROAD SURFACE. WE ACCEPTED THE IRON BAR AS THE PERPETUATED LOCATION OF THE ORIGINAL CORNER LOCATION.

IN AUGUST 2006 E.G. RUD AND SONS MADE A SURVEY AROUND SECTION 21 AND FOUND THE CAPPED REBAR, VERIFIED TIES AND ESTABLISHED KANABEC COUNTY COORDINATES ON THIS LOCATION.