

# CERTIFICATE OF LOCATION OF GOVERNMENT CORNER

EAST QUARTER Corner of Section 21, Township 38, Range 25, 4TH P.M.

STATE OF MINNESOTA, County of KANABEC

At the corner location shown on the sketch:  
SET # 7 REBAR WITH ALUMINUM CAP  
AND ESTABLISHED G.P.S. COORDINATES ON ITS LOCATION.

Kanabec County U.S. Survey Feet Coordinates  
NAD 1983, HARN 1996 Adjustment  
Obtained by RTK GPS Observation

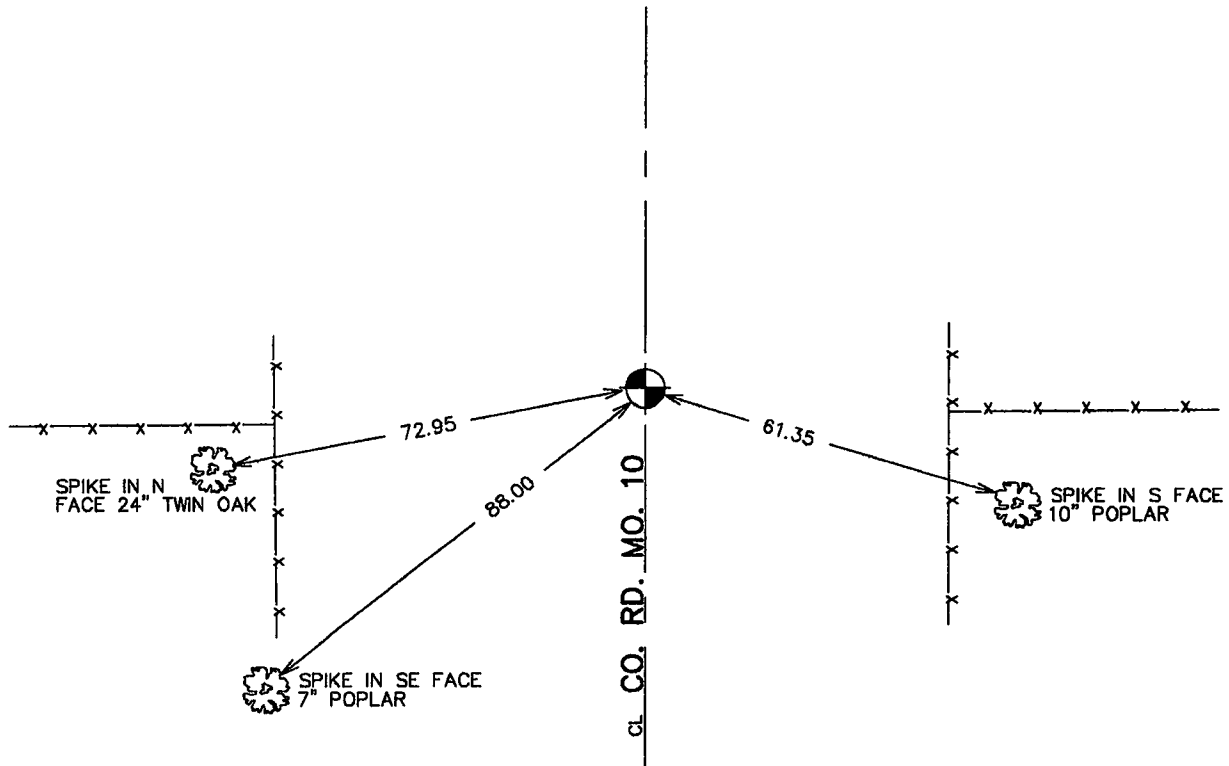
Northing= 114761.50

Easting= 359223.16

Note: NAD 1983, HARN 1996 Adjustment  
coordinates are NOT compatible with  
NAD 1983 coordinates

Note: 1 Meter=3937/1200 U.S. Survey Feet

## SKETCH OF REFERENCE TIES



Statement of evidence relative to this corner location is on back of page.

I hereby certify that this document and the data contained herein was prepared by me or under my direct supervision.

Ernest J. Red  
Signature

9-11-2006  
Date

Registration No. Minn No 9808

Land Surveyor,  Professional Engineer

County Surveyor,  County Engineer

## OFFICE OF THE COUNTY RECORDER

County of Kanabec

I hereby certify that this document was filed in the County Recorder's office at 8:00 A M. on the

13<sup>th</sup> day of Sept A.D., 2006

County Recorder Rhonda Olson

BY \_\_\_\_\_ Deputy

DOCUMENT NO. \_\_\_\_\_

EAST QUARTER CORNER SECTION 11, T40, R23

**STATEMENT OF EVIDENCE**

IN SEPTEMBER OF 1990, M.B. RUDE MADE A SURVEY AROUND SECTION 21, TOWNSHIP 38, RANGE 25, TO LOCATE THE EXISTING MONUMENTS, LINES OF OCCUPATION AND TO ESTABLISH SEARCH AREAS.

A 1/2" IRON PIPE WAS SET AT THE CENTER LINE OF THE ROAD AND FENCE LINES EAST AND WEST. NO EXCAVATION WAS MADE AT THIS LOCATION AND SHOULD BE EXCAVATED BEFORE THIS CORNER LOCATION IS ACCEPTED.

THIS CORNER IS IN AN EXISTING BLACKTOP ROAD AND SHOULD BE SEARCHED FOR AT THE TIME OF ADDITIONAL ROAD CONSTRUCTION OR BEFORE A BLACKTOP OVERLAY IS COMPLETED.

IN AUGUST 2006 E.G. RUD FOUND THIS 1/2 INCH I.P. AND ESTABLISHED KANABEC COUNTY COORDINATES ON THIS POSITION. NO EXCAVATION WAS MADE AT THIS TIME.