

CERTIFICATE OF LOCATION OF GOVERNMENT CORNER

NORTH QUARTER Corner of Section 27, Township 38, Range 25, 4TH P.M.

STATE OF MINNESOTA, County of KANABEC

At the corner location shown on the sketch:
On 04/ /2004 Found a Kanabec County Monument.

Kanabec County U.S. Survey Feet Coordinates
NAD 1983, HARN 1996 Adjustment
Obtained by RTK GPS Observation

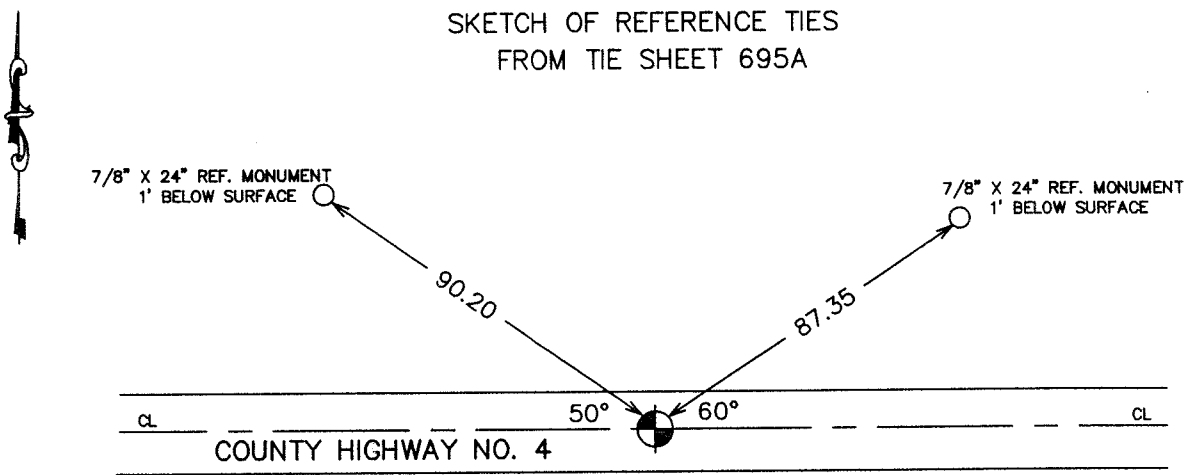
Northing= 11943.613

Easting= 361886.085

Note: NAD 1983, HARN 1996 Adjustment
coordinates are NOT compatible with
NAD 1983 coordinates

Note: 1 Meter=3937/1200 U.S. Survey Feet

SKETCH OF REFERENCE TIES
FROM TIE SHEET 695A



Statement of evidence relative to this corner location is on back of page.

I hereby certify that this document and the data contained herein was prepared by me or under my direct supervision.

Ernest Blud
Signature

6-07-2004
Date

Registration No. 9808

Land Surveyor, [] Professional Engineer

[] County Surveyor, [] County Engineer

OFFICE OF THE COUNTY RECORDER

County of _____

I hereby certify that this document was filed in the County Recorder's office at _____ M. on the _____ day of _____ A.D., 20____

County Recorder _____

BY _____ Deputy

DOCUMENT NO. _____

STATEMENT OF EVIDENCE
(FROM M.B. Rude)

All of the original bearing trees are now gone.

There is a survey on file for Section 22 in 1884, but this survey does not show what was found or set at the section or quarter corners.

On July 11, 1984, we ran a survey from the northeast corner of Section 26 to the northwest corner of Section 27 and located the existing monuments and lines of occupation.

This corner falls in an east-west road and fence line north extended south.

We made an excavation with a backhoe at this location. At 3 feet below the surface, into the natural ground, we found the bottom 2 feet of a pointed post. No additional evidence was found in the excavation.

I accepted the pointed post as the perpetuated location of the original corner post and replaced the post with a 7/8" by 24" capped rebar.

(2004)

In April 2004, E.G. Rud ran a survey around Sections 26, 27, 28, 29, 34 and 35, and found the 1/2" iron set by M.B. Rude. We established Kanabec County Coordinates on this location using G.P.S. equipment.