

# CERTIFICATE OF LOCATION OF GOVERNMENT CORNER

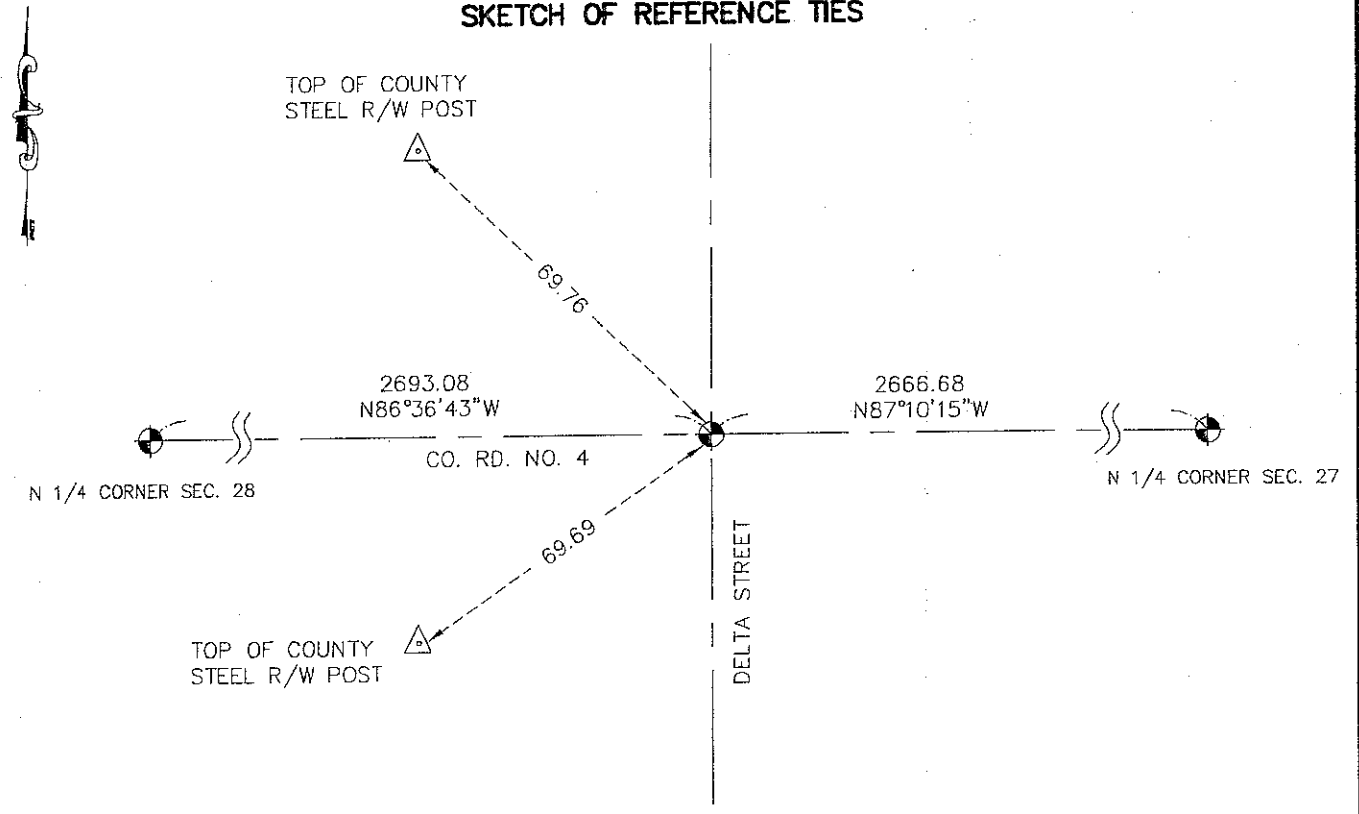
NORTHEAST Corner of Section 28, Township 38, Range 25, 4TH P.M.

STATE OF MINNESOTA, County of KANABEC

SET #7 REBAR WITH ALUMINUM CAP

Kanabec County U.S. Survey Feet Coordinates  
 NAD 1983, HARN 1996 Adjustment  
 Obtained by RTK GPS Observation  
 Northing= 112075.21  
 Easting= 359222.67  
 Note: NAD 1983, HARN 1996 Adjustment  
 coordinates are NOT compatible with  
 NAD 1983 coordinates  
 Note: 1 Meter=3937/1200 U.S. Survey Feet

### SKETCH OF REFERENCE TIES



Statement of evidence relative to this corner location is on back of page.

I hereby certify that this document and the data contained herein was prepared by me or under my direct supervision.

Ernest J. Rud 3-23-2009  
 Signature Date

Registration No. 9808

- Land Surveyor,  Professional Engineer  
 County Surveyor,  County Engineer

### OFFICE OF THE COUNTY RECORDER

County of \_\_\_\_\_

I hereby certify that this document was filed in the County Recorder's office at \_\_\_\_\_ M. on the \_\_\_\_\_ day of \_\_\_\_\_ A.D., 20\_\_\_\_

County Recorder \_\_\_\_\_

BY \_\_\_\_\_ Deputy

DOCUMENT NO. \_\_\_\_\_

NE CORNER SECTION 28, TOWNSHIP 38, RANGE 25

**STATEMENT OF EVIDENCE**

THE ORIGINAL CORNER WAS SET BY DEPUTY SURVEYOR DANIEL HIGBEE ON NOV. 18, 1851. A 12" BIRCH AND 8" MAPLE WERE USED AS BEARING TREES. NO VISIBLE EVIDENCE FOR THE ORIGINAL CORNER OR BEARING TREES REMAIN.

IN 1931 CHAS HANDSCHER RECORDED A SURVEY RECORDED ON BOOK A-1 PAGE 140 WHICH SHOWS A 3/4 INCH IRON PIPE SET AT THIS CORNER. IN OCT. 1975 M.B. RUDE MADE AN EXCAVATION ON CENTERLINE CENTERLINE INTERSECTION AT THIS CORNER LOCATION. M.B. RUDE FOUND A CO. HWY IRON PIN AT THE SURFACE AND AFTER FURTHER EXCAVATION FOUND THE 3/4" SOLID ROD SET BY HANDSCHER IN 1931. M.B. RUDE SET A CAST IRON ALUMINUM MONUMENT OVER THE SOLID ROD.

IN *Nov* 2008, E.G. RUD AND SONS FOUND THIS MONUMENT AND ESTABLISHED KANABEC COUNTY COORDINATES USING G.P.S. EQUIPMENT.