

# CERTIFICATE OF LOCATION OF GOVERNMENT CORNER

EAST QUARTER Corner of Section 28, Township 38, Range 25, 4TH P.M.

STATE OF MINNESOTA, County of KANABEC

At the corner location shown on the sketch:  
 FOUND A 1-1/2" IRON PIPE AND REPLACED WITH KANABEC COUNTY MONUMENT.

Kanabec County U.S. Survey Feet Coordinates  
 NAD 1983, HARN 1996 Adjustment  
 Obtained by RTK GPS Observation

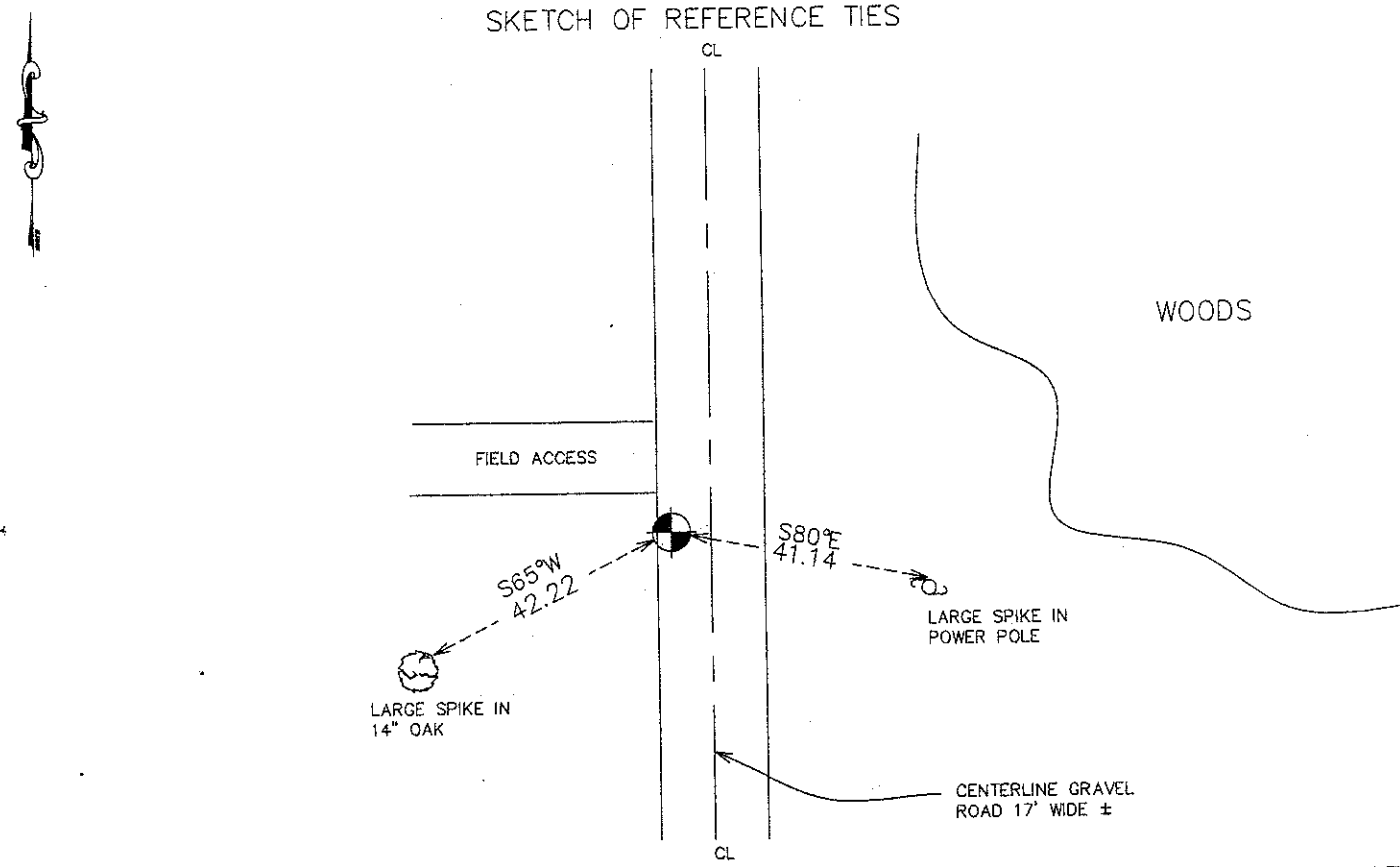
Northing= 109406.04

Easting= 359216.25

Note: NAD 1983, HARN 1996 Adjustment coordinates are NOT compatible with NAD 1983 coordinates

Note: 1 Meter=3937/1200 U.S. Survey Feet

### SKETCH OF REFERENCE TIES



Statement of evidence relative to this corner location is on back of page.

I hereby certify that this document and the data contained herein was prepared by me or under my direct supervision.

Ernest J. Paul 12-21-2010  
 Signature Date

Registration No. 9808

Land Surveyor, [ ] Professional Engineer

[ ] County Surveyor, [ ] County Engineer

### OFFICE OF THE COUNTY RECORDER

County of \_\_\_\_\_

I hereby certify that this document was filed in the County Recorder's office at \_\_\_\_\_ M. on the \_\_\_\_\_ day of \_\_\_\_\_ A.D., 20\_\_\_\_

County Recorder \_\_\_\_\_

BY \_\_\_\_\_ Deputy

DOCUMENT NO. \_\_\_\_\_

E1/4 CORNER OF SEC. 28, T. 38, R. 25

STATEMENT OF EVIDENCE

The original corner post was set by Surveyor, Daniel Higbee in November of 1851, which was a post with 2 birch bearing trees.

The original post and bearing trees no longer exist.

There is a record of a road opening dated October 31, 1913 by South Fork Township, but no mention of a survey being done.

In April of 2004, E.G. Rud ran a survey around Sections 26, 27, 28, 29, 34 and 35 to tie in existing monuments and lines of occupation.

John Reimer talked with Allen Schnack who owns the west 1/2 of west 1/2 of Section 27, and Allen showed John a well established occupation line in Section 28, which he always believed to be the boundary line. We then prorated the distance from the northeast corner of Section 28 to the Southeast corner of Section 33, which was 10628 feet compared to 10560 feet Government chainage.

The Southeast corner of Section 33 was set by the DNR for surveys in Isanti County, and the Northeast corner of section was established by M.B. Rude for County Road 4. This fell within 2 feet of the line shown by Allen Schnack. We then set the East Quarter corner at the proportional distance and on the centerline of the township road.

We took ties and established Kanabec County Coordinates using G.P.S. equipment.

In Aug. 2010, E.G. Rud and Sons, Inc. did a survey around Secs. 28-33 to set remaining section corners. In the research, a survey by Chas Handschu done in Dec. 1931 for Sec. 28 was discovered. This survey showed a post at the E1/4 corner of Sec. 28.

On Aug. 10, 2010 an excavation was done 13' south and 6' west of our corner set in 2004. A 1-1/2" iron pipe was found at this corner which fit distances and other monuments set by Handschu. A Kanabec County Monument was set in this location and Kanabec County Coordinates were established on this position. The old monument was removed.