

CERTIFICATE OF LOCATION OF GOVERNMENT CORNER

NORTH QUARTER Corner of Section 34, Township 38, Range 25, 4TH P.M.

STATE OF MINNESOTA, County of KANABEC

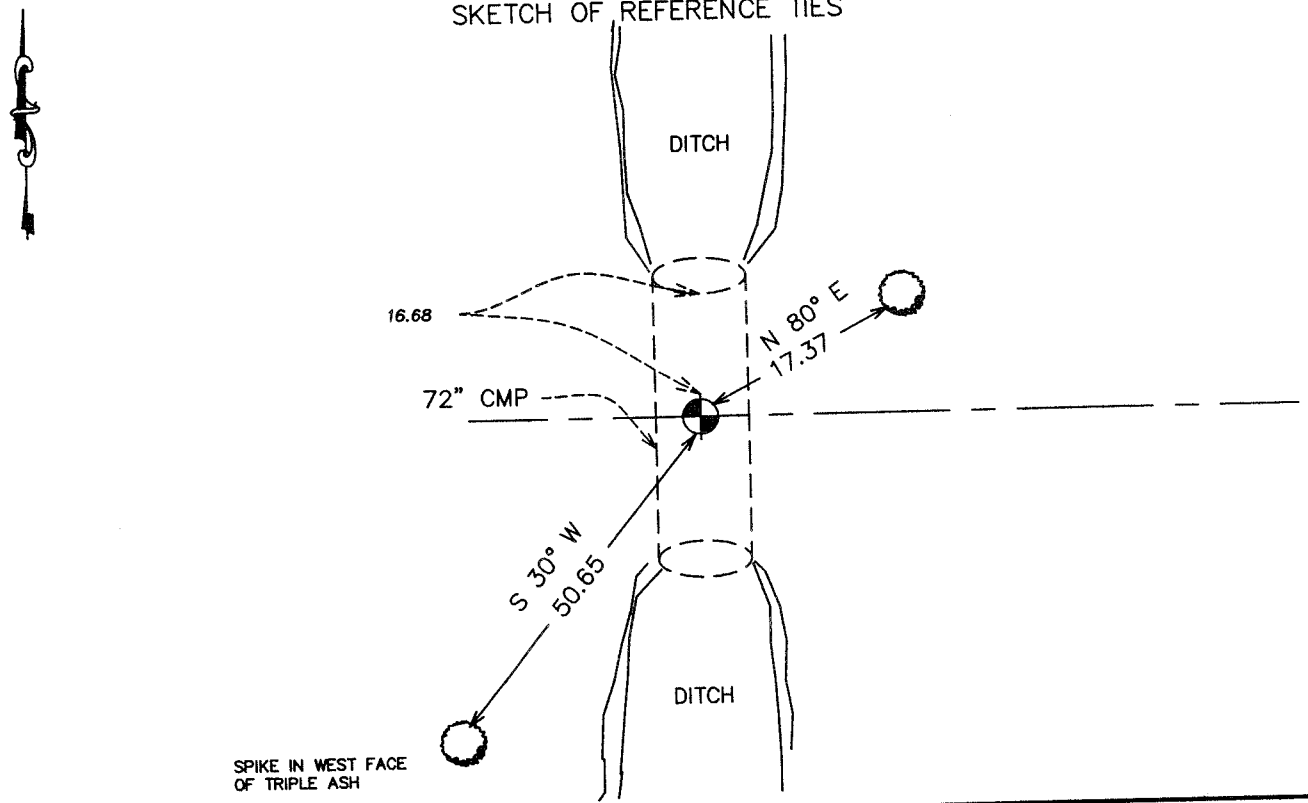
At the corner location shown on the sketch:
On 04/ /2004 Set a Kanabec County Monument.

Kanabec County U.S. Survey Feet Coordinates
NAD 1983, HARN 1996 Adjustment
Obtained by RTK GPS Observation

Northing= 106637.434
Easting= 361882.746

Note: NAD 1983, HARN 1996 Adjustment
coordinates are NOT compatible with
NAD 1983 coordinates
Note: 1 Meter=3937/1200 U.S. Survey Feet

SKETCH OF REFERENCE TIES



Statement of evidence relative to this corner location is on back of page.

I hereby certify that this document and the data contained herein was prepared by me or under my direct supervision.

Signature Date

Registration No. _____

- Land Surveyor, Professional Engineer
 County Surveyor, County Engineer

OFFICE OF THE COUNTY RECORDER

County of _____

I hereby certify that this document was filed in the County Recorder's office at _____ M. on the _____ day of _____ A.D., 20____

County Recorder _____

BY _____ Deputy

DOCUMENT NO. _____

STATEMENT OF EVIDENCE

The original corner post was set by Government Surveyor Daniel Higbee in November of 1851 and two bearing trees were established. No evidence of the post or bearing trees remain.

No other records of surveys along this line were found at Kanabec County.

In April 2004, E.G. Rud ran a survey around Sections 26, 27, 28, 29, 34 and 35 to tie in existing monumentation and lines of occupation. Doug Heins, a lifelong resident of Grass Lake testified that this corner fell on the centerline of the town road and the centerline of a north-south ditch.

We set this monument as a lost corner between the northeast and northwest corner of Section 34. This position fell 1 foot north of the centerline of the road and 2 feet west of the centerline of the ditch.

We took ties and established Kanabec County coordinates on this position using G.P.S. equipment.