

CERTIFICATE OF LOCATION OF GOVERNMENT CORNER

NORTHEAST Corner of Section 33, Township 38, Range 25, 4TH P.M.

STATE OF MINNESOTA, County of KANABEC

At the corner location shown on the sketch:
On 04/ /2004 Set a Kanabec County Monument.

Kanabec County U.S. Survey Feet Coordinates
NAD 1983, HARN 1996 Adjustment
Obtained by RTK GPS Observation

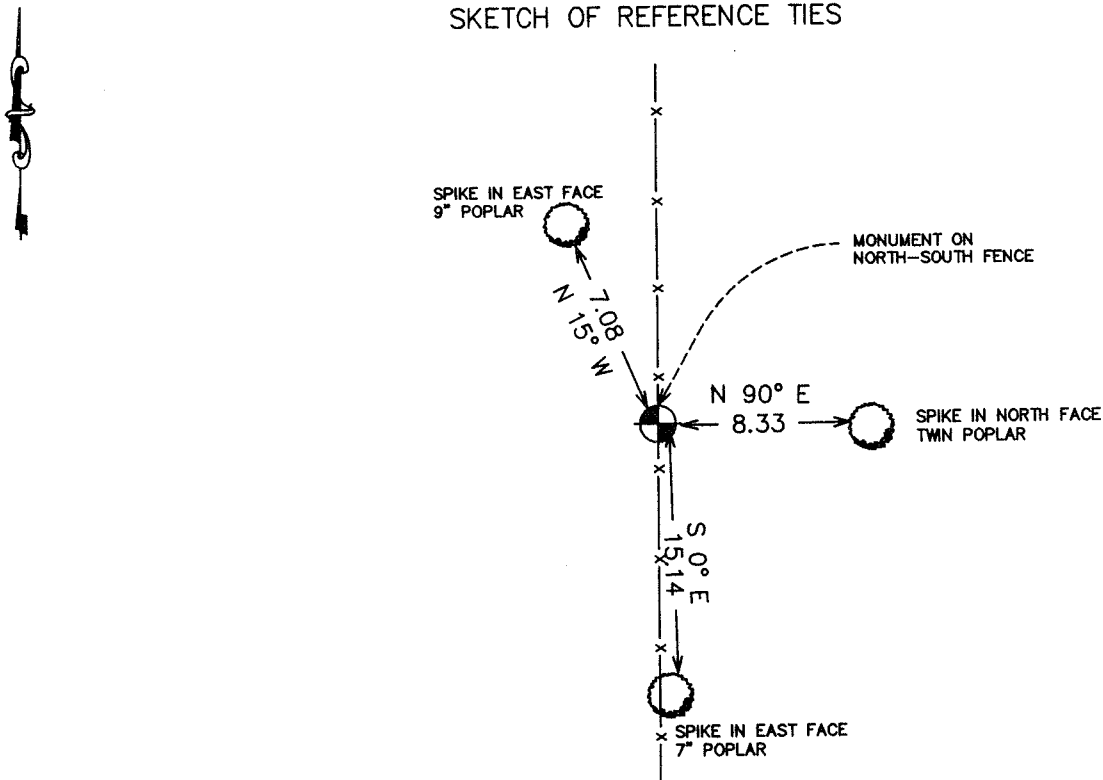
Northing= 106761.108

Easting= 359227.970

Note: NAD 1983, HARN 1996 Adjustment
coordinates are NOT compatible with
NAD 1983 coordinates

Note: 1 Meter=3937/1200 U.S. Survey Feet

SKETCH OF REFERENCE TIES



Statement of evidence relative to this corner location is on back of page.

I hereby certify that this document and the data contained herein was prepared by me or under my direct supervision.

Ernest J. Rud 5-27-2004
Signature Date

Registration No. 9808

Land Surveyor, [] Professional Engineer

[] County Surveyor, [] County Engineer

OFFICE OF THE COUNTY RECORDER

County of _____

I hereby certify that this document was filed in the County Recorder's office at _____ M. on the _____ day of _____ A.D., 20____

County Recorder _____

BY _____ Deputy

DOCUMENT NO. _____

STATEMENT OF EVIDENCE

The original corner post was set by Government Surveyor, Daniel Higbee in November of 1851 and 2 bearing trees being tamarack were described.

No evidence of the original corner or bearing trees remain. No other records of surveys were found at Kanabec County.

In April of 2004, E.G. Rud ran a survey around Sections 26, 27, 28, 29, 34 and 25 to tie in existing monuments and lines of occupation.

There is a north-south old fence line at this location. Doug Heinz, a lifelong resident of Grass Lake testified that this fence was always used as the property line and should be about $200 \pm$ feet north of a deer stand.

We set this corner on the fence line at a proportionate distance from the Northeast corner of Section 28 to the Southeast corner of Section 33. Total distance was 10628, divide by 2, equals $5314 \pm$ versus Government of 5280. This position falls approximately 200 feet north of the tree stand.

We set a Kanabec County Monument, took ties, and established Kanabec County Coordinates on this location.