

CERTIFICATE OF LOCATION OF GOVERNMENT CORNER

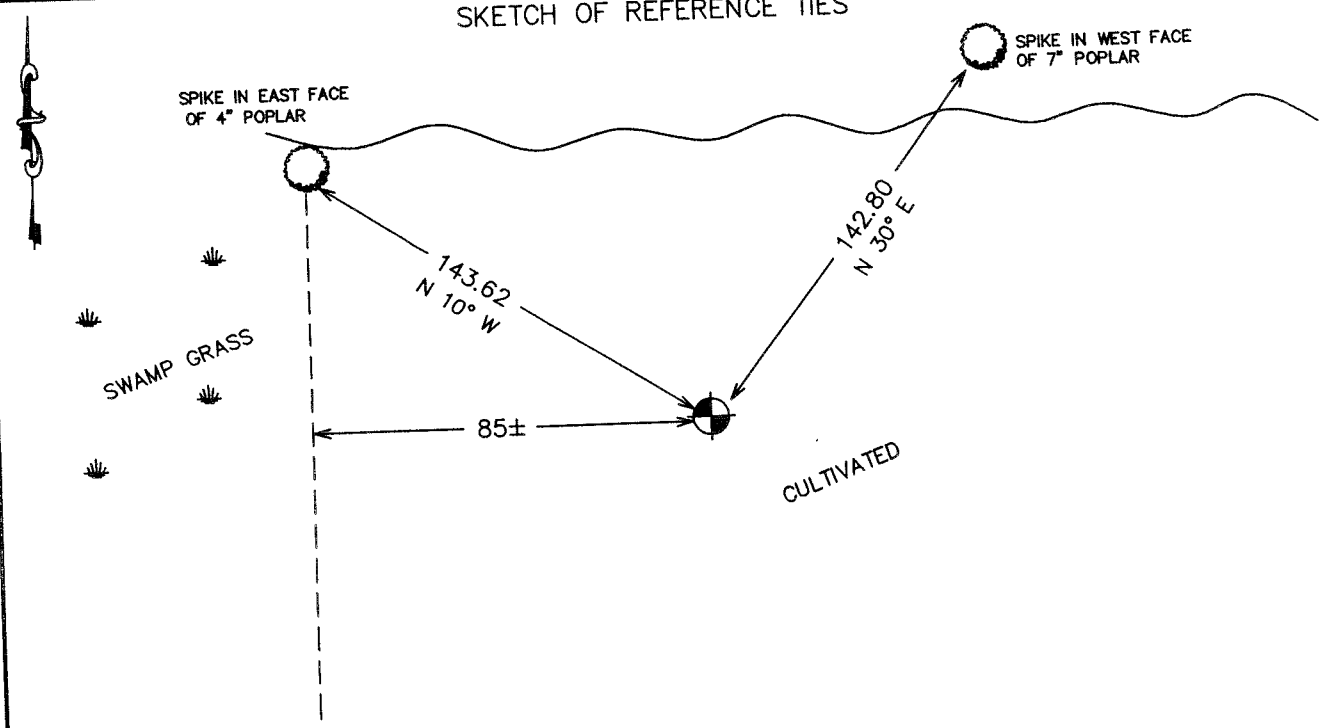
EAST QUARTER Corner of Section 33, Township 38, Range 25, 4TH P.M.

STATE OF MINNESOTA, County of KANABEC

At the corner location shown on the sketch:
On 04/ /2004 Set a Kanabec County Monument.

Kanabec County U.S. Survey Feet Coordinates
NAD 1983, HARN 1996 Adjustment
Obtained by RTK GPS Observation
Northing= 104104.115
Easting= 359232.100
Note: NAD 1983, HARN 1996 Adjustment
coordinates are NOT compatible with
NAD 1983 coordinates
Note: 1 Meter=3937/1200 U.S. Survey Feet

SKETCH OF REFERENCE TIES



Statement of evidence relative to this corner location is on back of page.

I hereby certify that this document and the data contained herein was prepared by me or under my direct supervision.

[Signature]
Signature

6-22-2004
Date

Registration No. 9808

- Land Surveyor, [] Professional Engineer
- [] County Surveyor, [] County Engineer

OFFICE OF THE COUNTY RECORDER

County of _____

I hereby certify that this document was filed in the County Recorder's office at _____ M. on the _____ day of _____ A.D., 20____

County Recorder _____

BY _____ Deputy

DOCUMENT NO. _____

STATEMENT OF EVIDENCE

The original corner post was set by Government Surveyor Daniel Higbee in November of 1851 and two tamarack bearing trees were established. No evidence of the post or bearing trees remain.

No other records of surveys along this line were found at Kanabec County Offices.

In April 2004, E.G. Rud ran a survey around Sections 26, 27, 28, 29, 34 and 35 to tie in existing monumentation and lines of occupation. None of either were found at this corner.

We set a Kanabec County monument at a lost position between the northeast and southeast corner of Section 28. This position fell in a cultivated field.

We took ties and established Kanabec County coordinates on this position using G.P.S. equipment.