

CERTIFICATE OF LOCATION OF GOVERNMENT CORNER

EAST QUARTER Corner of Section 3, Township 38, Range 25, 4TH P.M.

STATE OF MINNESOTA, County of KANABEC

At the corner location shown on the sketch:
FOUND THIS MONUMENT
AND ESTABLISHED G.P.S. COORDINATES ON ITS LOCATION.

Kanabec County U.S. Survey Feet Coordinates
NAD 1983, HARN 1996 Adjustment
Obtained by RTK GPS Observation

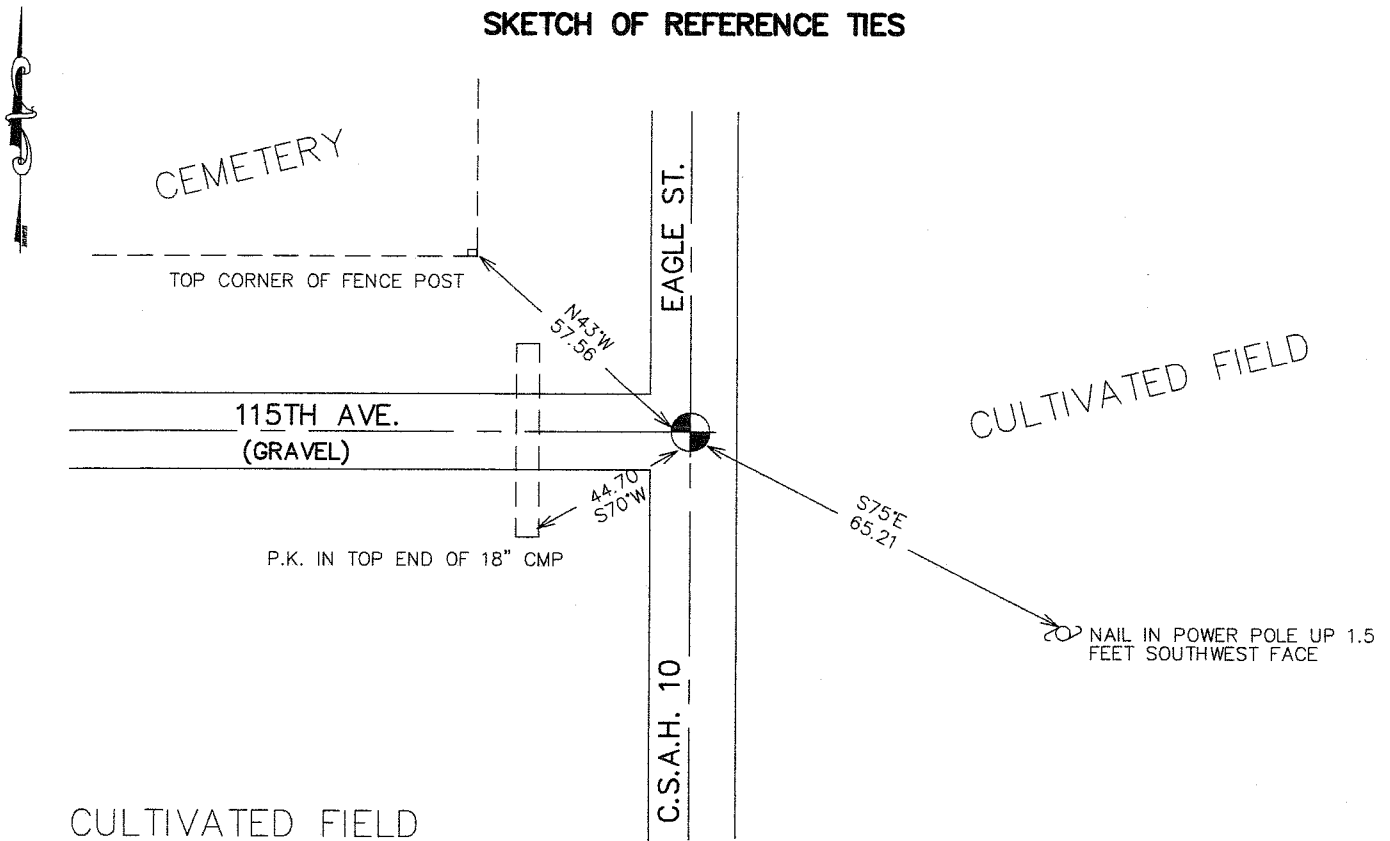
Northing= 130433.97

Easting= 364672.56

Note: NAD 1983, HARN 1996 Adjustment
coordinates are NOT compatible with
NAD 1983 coordinates

Note: 1 Meter=3937/1200 U.S. Survey Feet

SKETCH OF REFERENCE TIES



Statement of evidence relative to this corner location is on back of page.

I hereby certify that this document and the data contained herein was prepared by me or under my direct supervision.

Ernest Blud
Signature

4-12-2007
Date

Registration No. Min No. 9808

Land Surveyor, Professional Engineer

County Surveyor, County Engineer

OFFICE OF THE COUNTY RECORDER

County of _____

I hereby certify that this document was filed in the County Recorder's office at _____ M. on the _____ day of _____ A.D., 20 _____

County Recorder _____

BY _____ Deputy

DOCUMENT NO. _____

EAST QUARTER CORNER SECTION 3, T38, R25

STATEMENT OF EVIDENCE

The original public land survey was run in 1851 by Mr. D. Higbee, Deputy Surveyor, and a wood post was used to mark the corner. Bearing ties were made to a black ash and an aspen.

From Statement of Evidence, Recorded Document Index Number 803. on December 4, 1989

M.B. Rude, County Surveyor.

The records of the former County Surveyor, John Nelson, show a Section subdivision of Section 2, Township 38, Range 25. These records show a tie to this corner, but do not state what was found or set. They also show a Town Road Order survey, dated July 16, 1901, from the Southeast Corner of Section 3 to the East Quarter Corner of Section 3.

In July of 1989, Mr. M. B. Rude made a survey along the East and South lines of Section 3 to locate lines of occupation and search areas. This corner falls in the intersection of roads North, South and West. On July 19, 1989, Mr. M. B. Rude made a 15 foot by 40 foot by 4 foot deep excavation with the backhoe to search for any sign of this corner location. Nothing was found in the excavation. Mr. M. B. Rude set this corner from the existing lot markers from the 1st ADDITION TO OGILVIE CEMETERY, surveyed by Gerald Sullivan, dated in June of 1964. A 7/8 inch x 24" capped rebar was placed for the corner, and new reference ties were made.

From Statement of Evidence, Recorded Document Index Number 803. on May 28, 1993

Mr. Gregory A. Nikodyn, County Engineer.

One existing tie was intact. CSAH 10 was regraded in 1992. Prior to regrading, additional reference ties were placed outside of right-of-way limits. Located the Section Marker from ties placed prior to regrading and existing tie. A capped 7/8 inch x 24 inch rebar was placed on 4-22-93, prior to bituminous paving. An additional new tie was placed.

From Statement of Evidence, Recorded Document Index Number 803. on Dec 6, 1995

Mr. Gregory A. Nikodyn, County Engineer.

All reference ties were intact. The roadway was regraded in 1992. We located the Quarter Corner prior to construction, and placed additional references outside of the new construction limits.

Before the roadway was paved in 1993, the corner was reestablished according to references obtained previously. Additional references were also placed:

In January of 2002, The Minnesota Department of Transportation recovered a 7/8 inch by 24 inch capped rebar down 0.5 feet. Also found 3 reference ties as shown by Mr. Nikodyn's Certificate dated 12/06/95. New Bearing ties were made as shown on the front of this sheet. The Minnesota Department of Transportation accepts this position as the correct location for the corner.

In April 2003 E.G. Rud and Sons established Kanabec County Coordinates on this position using G.P.S. equipment.