

CERTIFICATE OF LOCATION OF GOVERNMENT CORNER

NORTHEAST Corner of Section 10, Township 38, Range 25, 4TH P.M.

STATE OF MINNESOTA, County of KANABEC

At the corner location shown on the sketch:

FOUND THIS MONUMENT
AND ESTABLISHED G.P.S. COORDINATES ON ITS LOCATION.

Kanabec County U.S. Survey Feet Coordinates
NAD 1983, HARN 1996 Adjustment
Obtained by RTK GPS Observation

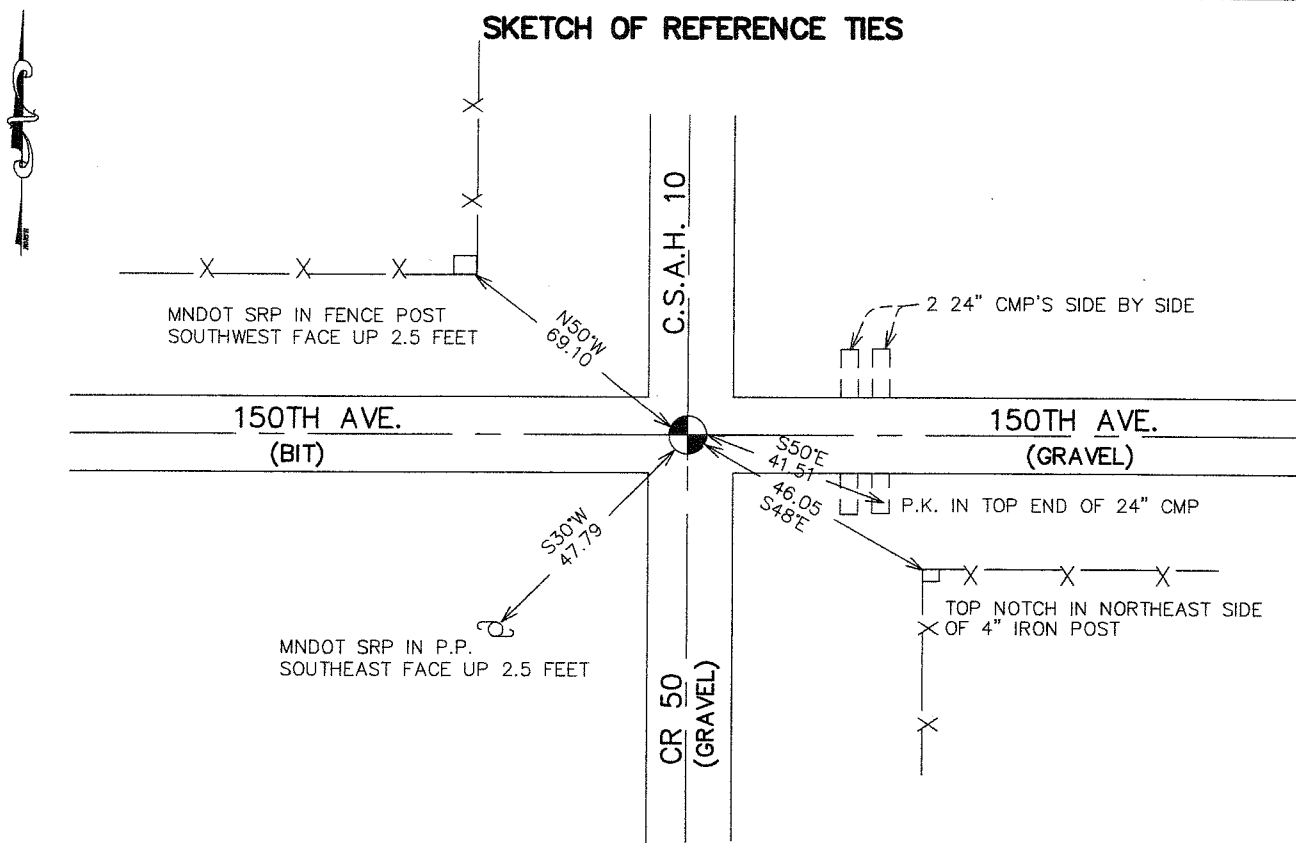
Northing= 127802.93

Easting= 364646.41

Note: NAD 1983, HARN 1996 Adjustment
coordinates are NOT compatible with
NAD 1983 coordinates

Note: 1 Meter=3937/1200 U.S. Survey Feet

SKETCH OF REFERENCE TIES



Statement of evidence relative to this corner location is on back of page.

I hereby certify that this document and the data contained herein was prepared by me or under my direct supervision.

Ernest Reed 3-19-2007
Signature Date

Registration No. Minn No 9808

- Land Surveyor, Professional Engineer
 County Surveyor, County Engineer

OFFICE OF THE COUNTY RECORDER

County of _____

I hereby certify that this document was filed in the County Recorder's office at _____ M. on the _____ day of _____ A.D., 20____

County Recorder _____

BY _____ Deputy

DOCUMENT NO. _____

NORTHEAST CORNER SECTION 10, T38, R25

STATEMENT OF EVIDENCE

The original public land survey was run in 1851 by Mr. D. Higbee, Deputy Surveyor, and a wood post was used to mark the corner. Bearing ties were made to a black ash and a maple.

From Statement of Evidence, Recorded Document Index Number 799, on December 4, 1989

M.B. Rude, County Surveyor.

The records of the former County Surveyor, John Nelson, on file, show the Town Road survey along the West and South lines of the Section, and a complete Section Breakdown for Section 2. There are presently roads North, South, East, and West from this corner.

In July of 1989, Mr. M.B. Rude made a survey along the West line of Section 2 to locate lines of occupation and search areas.

On July 19, 1989, Mr. M.B. Rude made a 15 foot by 15 foot excavation with a backhoe, and one foot below the surface, he found a sandstone with a "+" cut in it. He replaced the found stone with a 7/8 inch by 24 inch capped rebar, to further perpetuate the corner location. New reference ties were made.

From Statement of Evidence, Recorded Document Index Number 799, on May 28, 1993.

Mr. Gregory A. Nikodyn, County Engineer

One existing tie was intact. CSAH 10 was regraded in 1992, but prior to regrading, additional reference ties were placed outside of right-of-way limits. Located the Section Marker from ties placed prior to regrading and existing ties. A capped 7/8" by 24" rebar was placed on 4-23-93, prior to bituminous paving. New reference ties were placed.

From Statement of Evidence, Recorded Document Index Number 799, on Dec 6, 1995.

Mr. Gregory A. Nikodyn, County Engineer.

All reference ties were intact. The roadway was regraded in 1992. We located the Section Corner prior to construction, and placed additional references outside of the new construction limits.

Before the roadway was paved in 1993, the corner was reestablished according to references obtained previously. Additional references were also placed.

In January of 2002, The Minnesota Department of Transportation recovered a 7/8-inch by 24 inch capped rebar, down 0.5 feet. Also found 1 reference tie as shown by Mr. Nikodyn's Certificate, dated 12/6/95. New Bearing ties were made as shown on the front of this sheet. The Minnesota Department of Transportation accepts this position as the correct location for the corner.

For details and survey analysis, contact the Minnesota Department of Transportation District Surveys Office in Baxter, Minnesota.

In Oct. 2005, E.G. Rud and Sons found this monument and established Kanabec County Coordinates using G.P.S. equipment.