

# CERTIFICATE OF LOCATION OF GOVERNMENT CORNER

EAST QUARTER Corner of Section 10, Township 38, Range 25, 4TH P.M.

STATE OF MINNESOTA, County of KANABEC

At the corner location shown on the sketch:

FOUND THIS MONUMENT  
AND ESTABLISHED KANABEC COUNTY COORDINATES ON ITS LOCATION.

Kanabec County U.S. Survey Feet Coordinates  
NAD 1983, HARN 1996 Adjustment  
Obtained by RTK GPS Observation

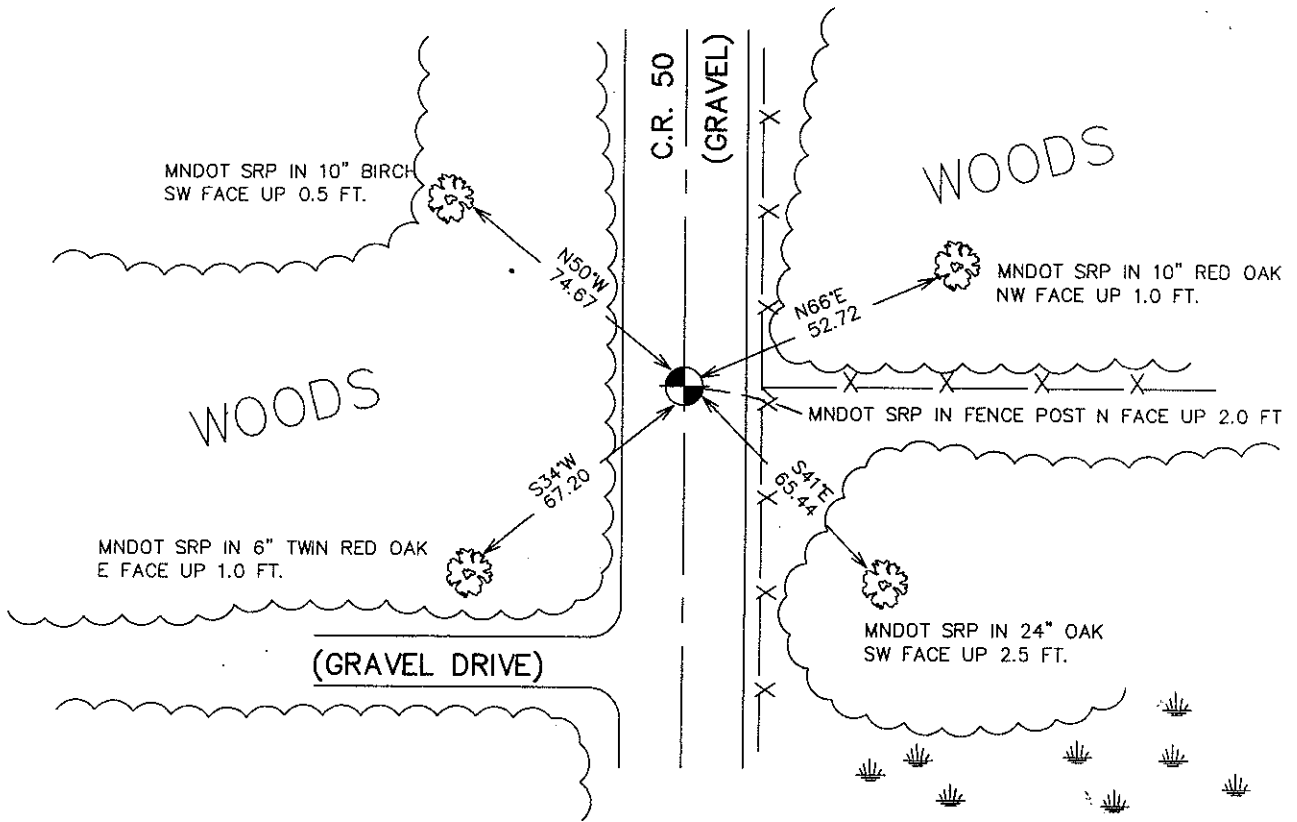
Northing= 125132.20

Easting= 364636.43

Note: NAD 1983, HARN 1996 Adjustment  
coordinates are NOT compatible with  
NAD 1983 coordinates

Note: 1 Meter=3937/1200 U.S. Survey Feet

### SKETCH OF REFERENCE TIES



Statement of evidence relative to this corner location is on back of page:

I hereby certify that this document and the data contained herein was prepared by me or under my direct supervision.

Ernest M. Reed  
Signature

10-05-2007  
Date

Registration No. 9808

Land Surveyor,       Professional Engineer

County Surveyor,       County Engineer

### OFFICE OF THE COUNTY RECORDER

County of \_\_\_\_\_

I hereby certify that this document was filed in the County Recorder's office at \_\_\_\_\_ M. on the \_\_\_\_\_ day of \_\_\_\_\_ A.D., 20\_\_\_\_

County Recorder \_\_\_\_\_

BY \_\_\_\_\_ Deputy

DOCUMENT NO. \_\_\_\_\_

## EAST QUARTER CORNER SECTION 10, T38, R25

### STATEMENT OF EVIDENCE

THE ORIGINAL PUBLIC LAND SURVEY WAS RUN IN 1851 BY MR. D. HIGBEE, DEPUTY SURVEYOR, AND A WOOD POST WAS USED TO MARK THE CORNER. BEARING TIES WERE MADE TO TWO IRONWOOD TREES.

IN 1901, A SURVEY OF A ROAD IN SOUTH FORK TOWNSHIP, BY JOHN NELSON, SURVEYOR, BEGINS AT THE NORTHEAST CORNER OF SECTION 10, AND GOES SOUTH TO THE SOUTHEAST CORNER OF SECTION 10, THEN GOES SOUTH TO THE SOUTHEAST CORNER OF SECTION 15, T.38, R.25. MR. NELSON DOES NOT SAY WHAT WAS FOUND AT THE CORNERS.

IN 1999-2002, THE MINNESOTA DEPARTMENT OF TRANSPORTATION MADE A SURVEY AROUND SECTIONS 10 AND 11, T.38, R.25, TO LOCATE THE EXISTING MONUMENTS, LINES OF OCCUPATION, AND SEARCH AREAS. THIS CORNER FALLS NEAR THE INTERSECTION OF THE CENTERLINE OF COUNTY ROAD 50, AND A FENCE LINE EAST.

ON OCTOBER 31, 2001, THE MINNESOTA DEPARTMENT OF TRANSPORTATION EXCAVATED A 5 X 24 X 3 FOOT HOLE AT THE INTERSECTION OF THE CENTERLINE OF COUNTY ROAD 50 AND A FENCE LINE EAST. NO EVIDENCE OF THE CORNER WAS FOUND.

IN JANUARY, 2002, THE MINNESOTA DEPARTMENT OF TRANSPORTATION ACCEPTED THE OCCUPATION POSITION EVIDENCED BY THE INTERSECTION OF THE CENTERLINE OF COUNTY ROAD 50 AND A FENCE LINE EAST, AS A PERPETUATION OF THE ORIGINAL LOCATION OF THE CORNER. THE MINNESOTA DEPARTMENT OF TRANSPORTATION SET A CAST IRON CAP, WITH A BRASS CENTER, ON A 30 INCH LONG TELES PAR TUBE, TO MARK THE CORNER. NEW BEARING TIES WERE MADE TO THREE OAKS, ONE FENCE POST, AND A BIRCH TREE. THE MINNESOTA DEPARTMENT OF TRANSPORTATION ACCEPTS THIS POSITION AS THE CORRECT LOCATION FOR THE CORNER.

IN 2006 E.G. RUD AND SONS ESTABLISHED KANABEC COUNTY COORDINATES ON THIS CORNER.