

CERTIFICATE OF LOCATION OF GOVERNMENT CORNER

NORTH QUARTER Corner of Section 14, Township 38, Range 25, 4TH P.M.

STATE OF MINNESOTA, County of KANABEC

At the corner location shown on the sketch:

FOUND THIS MONUMENT
AND ESTABLISHED KANABEC COUNTY COORDINATES ON ITS LOCATION.

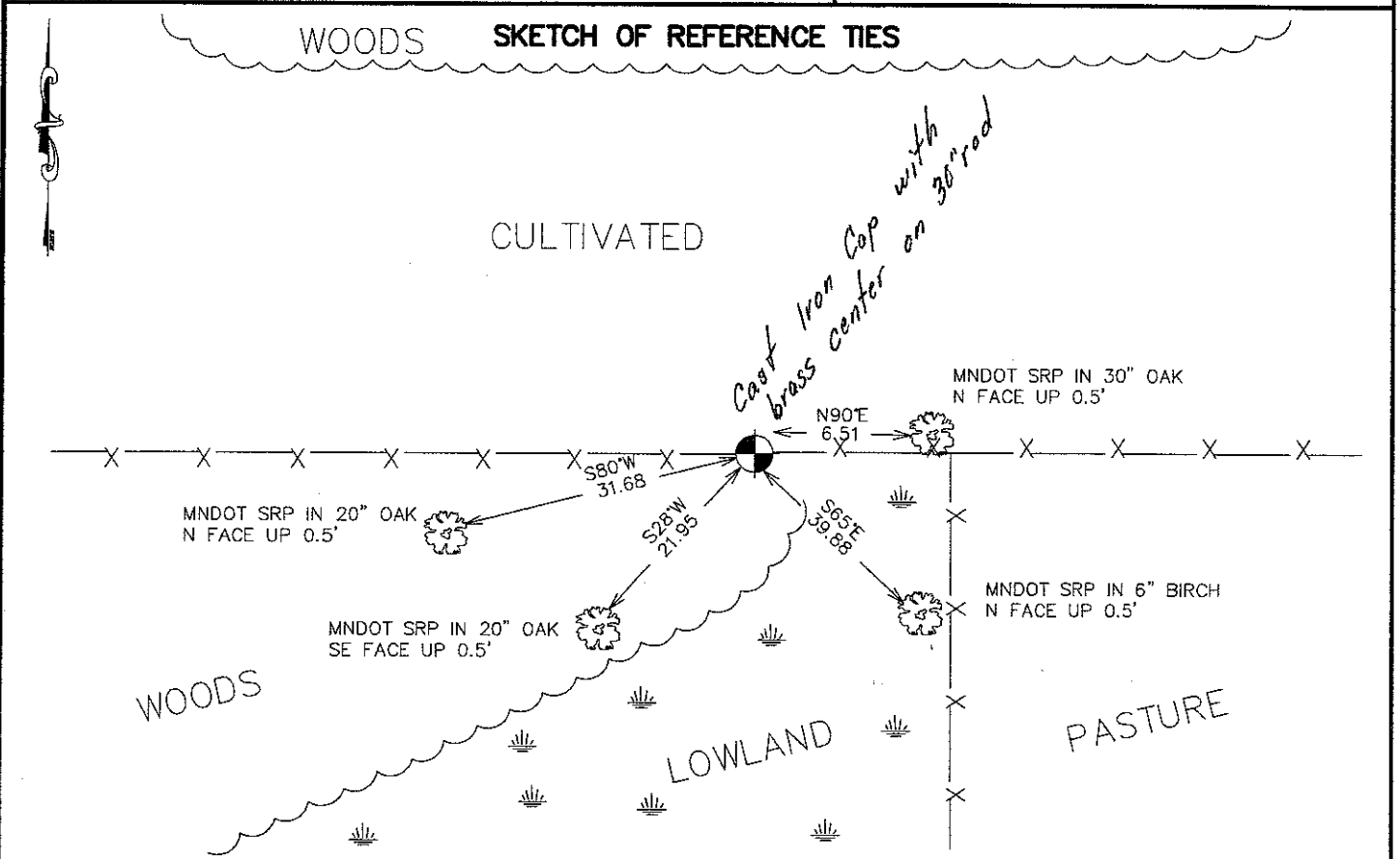
Kanabec County U.S. Survey Feet Coordinates
NAD 1983, HARN 1996 Adjustment
Obtained by RTK GPS Observation

Northing= 122287.98

Easting= 367315.62

Note: NAD 1983, HARN 1996 Adjustment
coordinates are NOT compatible with
NAD 1983 coordinates

Note: 1 Meter=3937/1200 U.S. Survey Feet



Statement of evidence relative to this corner location is on back of page.

I hereby certify that this document and the data contained herein was prepared by me or under my direct supervision.

Ernst G Rud 8-20-2007
Signature Date

Registration No. Minn No 9808

Land Surveyor, [] Professional Engineer
[] County Surveyor, [] County Engineer

OFFICE OF THE COUNTY RECORDER

County of _____

I hereby certify that this document was filed in the County Recorder's office at _____ M. on the _____ day of _____ A.D., 20 _____

County Recorder _____

BY _____ Deputy

DOCUMENT NO. _____

NORTH QUARTER CORNER SECTION 14, T38, R25

STATEMENT OF EVIDENCE

THE ORIGINAL PUBLIC LAND SURVEY WAS RUN IN 1851 BY MR. D. HIGBEE, DEPUTY SURVEYOR, AND A WOOD POST WAS USED TO MARK THE CORNER. BEARING TIES WERE MADE TO TWO PINE TREES.

IN 1909, FORMER COUNTY SURVEYOR, JOHN NELSON, MADE A SURVEY ON THE LINE BETWEEN SECTIONS 11 AND 14. STARTING AT NORTHWEST CORNER OF SECTION 13, HE WENT WEST TO A FOUND STUMP, CORRESPONDING TO THE GOVERNMENT FIELD NOTES, THAT BEING THE QUARTER POST BETWEEN SECTIONS 11 AND 14. RECORDED IN SURVEYOR'S RECORD BOOK A.

IN 1999-2002, THE MINNESOTA DEPARTMENT OF TRANSPORTATION MADE A SURVEY AROUND SECTIONS 11, AND 14, T.38, R.25, TO LOCATE THE EXISTING MONUMENTS, LINES OF OCCUPATION AND SEARCH AREAS. THIS CORNER FALLS NEAR AN EAST-WEST LINE.

ON DECEMBER 13, 2001 THE MINNESOTA DEPARTMENT OF TRANSPORTATION EXCAVATED A 8 FOOT X 10 FOOT X 1.5 FOOT DEEP HOLE AT A COMPUTED LOCATION ON THE FENCE LINE EAST AND WEST AND MIDWAY BETWEEN SECTION CORNERS. NO EVIDENCE OF THE CORNER WAS FOUND.

IN JANUARY, 2002, THE MINNESOTA DEPARTMENT OF TRANSPORTATION COMPUTED THE CORNER LOCATION ON THE EXISTING EAST-WEST FENCE LINE, AND AT A DISTANCE MIDWAY BETWEEN SECTION CORNERS. A CAST IRON CAP WITH A BRASS CENTER, ON A 30 INCH LONG TELESPAR TUBE WAS SET TO MARK THE CORNER. NEW BEARING TIES WERE MADE TO THREE OAKS AND A BIRCH TREE. THE MINNESOTA DEPARTMENT OF TRANSPORTATION ACCEPTS THIS POSITION AS THE CORRECT LOCATION FOR THE CORNER.

IN 2006, E.G. RUD AND SONS ESTABLISHED KANABEC COUNTY COORDINATES ON THIS MONUMENT.