

CERTIFICATE OF LOCATION OF GOVERNMENT CORNER

NORTHEAST Corner of Section 15, Township 38, Range 25, 4TH P.M.

STATE OF MINNESOTA, County of KANABEC

At the corner location shown on the sketch:

FOUND THIS MONUMENT
AND ESTABLISHED KANABEC COUNTY COORDINATES ON ITS LOCATION.

Kanabec County U.S. Survey Feet Coordinates
NAD 1983, HARN 1996 Adjustment
Obtained by RTK GPS Observation

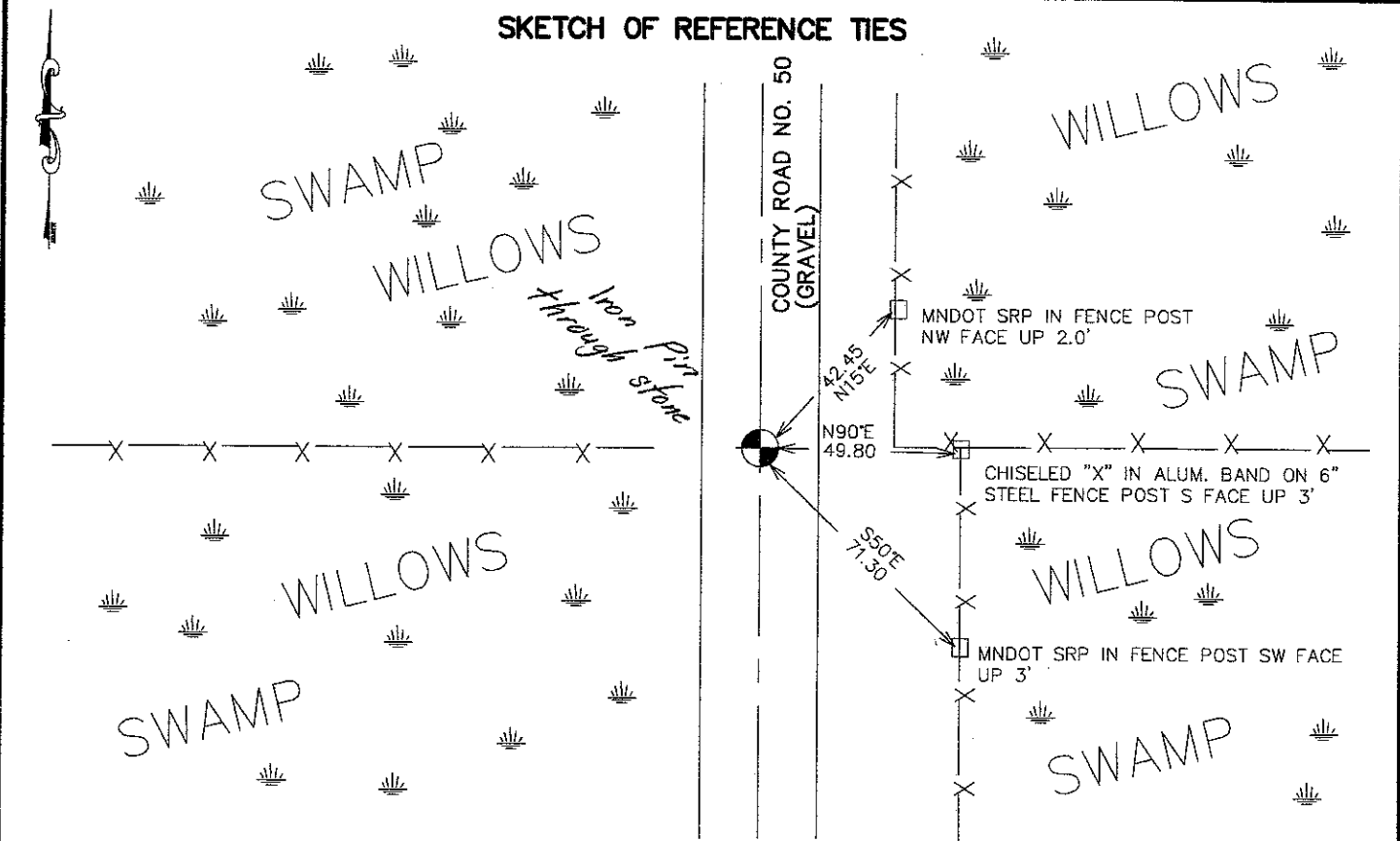
Northing= 122465.88

Easting= 364650.29

Note: NAD 1983, HARN 1996 Adjustment
coordinates are NOT compatible with
NAD 1983 coordinates

Note: 1 Meter=3937/1200 U.S. Survey Feet

SKETCH OF REFERENCE TIES



Statement of evidence relative to this corner location is on back of page.

I hereby certify that this document and the data contained herein was prepared by me or under my direct supervision.

Ernest Reed 8-20-2007
Signature Date

Registration No. Minn No 9808

Land Surveyor, Professional Engineer
 County Surveyor, County Engineer

OFFICE OF THE COUNTY RECORDER

County of _____

I hereby certify that this document was filed in the County Recorder's office at _____ M. on the _____ day of _____ A.D., 20____

County Recorder _____

BY _____ Deputy

DOCUMENT NO. _____

NORTHEAST CORNER SECTION 15, T38, R25

STATEMENT OF EVIDENCE

THE ORIGINAL PUBLIC LAND SURVEY WAS RUN IN 1851 BY MR. D. HIGBEE, DEPUTY SURVEYOR, AND A WOOD POST WAS USED TO MARK THE CORNER. BEARING TIES WERE MADE TO TWO TAMARACKS.

IN 1901, A SURVEY OF A ROAD IN SOUTH FORK TOWNSHIP, BY JOHN NELSON, SURVEYOR, BEGINS AT THE NORTHEAST CORNER OF SECTION 10, AND GOES SOUTH TO THE SOUTHEAST CORNER OF SECTION 10, AND THEN GOES SOUTH TO THE SOUTHEAST CORNER OF SECTION 15, T.38, R.25. MR. NELSON DOES NOT SAY WHAT WAS FOUND AT THE CORNERS.

IN 1999-2002, THE MINNESOTA DEPARTMENT OF TRANSPORTATION MADE A SURVEY AROUND SECTIONS 10, 11, 14, AND 15, T.38, R.25, TO LOCATE THE EXISTING MONUMENTS, LINES OF OCCUPATION AND SEARCH AREAS. THIS CORNER FALLS NEAR THE INTERSECTION OF THE CENTERLINE OF COUNTY ROAD 50, AND A FENCE LINE EAST AND WEST.

ON NOVEMBER 12, 1999, THE MINNESOTA DEPARTMENT OF TRANSPORTATION EXCAVATED A 6' X 8' X 4' HOLE AT THE INTERSECTION OF THE CENTERLINE OF COUNTY ROAD 50 AND A FENCE LINE EAST AND WEST. A 1.5 FOOT DIAMETER FLAT STONE WAS RECOVERED AT THE LOCATION.

IN JANUARY, 2002, THE MINNESOTA DEPARTMENT OF TRANSPORTATION ACCEPTED THE RECOVERED STONE AS THE PERPETUATION OF THE CORNER. THE MINNESOTA DEPARTMENT OF TRANSPORTATION SET A 3/4" X 24" IRON PIN, BY DRILLING A HOLE IN THE CENTER OF THE STONE, AND PLACING THE IRON PIN THROUGH IT, TO MARK THE CORNER. NEW BEARING TIES WERE MADE TO THREE FENCE POSTS. THE MINNESOTA DEPARTMENT OF TRANSPORTATION ACCEPTS THIS POSITION AS THE CORRECT LOCATION FOR THEIR CORNER.

IN 2006, E.G. RUD AND SONS ESTABLISHED KANABEC COUNTY COORDINATES ON THIS MONUMENT.