

CERTIFICATE OF LOCATION OF GOVERNMENT CORNER

EAST QUARTER Corner of Section 15, Township 38, Range 25, 4TH P.M.

STATE OF MINNESOTA, County of KANABEC

At the corner location shown on the sketch:

FOUND THIS MONUMENT
AND ESTABLISHED KANABEC COUNTY COORDINATES ON ITS LOCATION.

Kanabec County U.S. Survey Feet Coordinates
NAD 1983, HARN 1996 Adjustment
Obtained by RTK GPS Observation

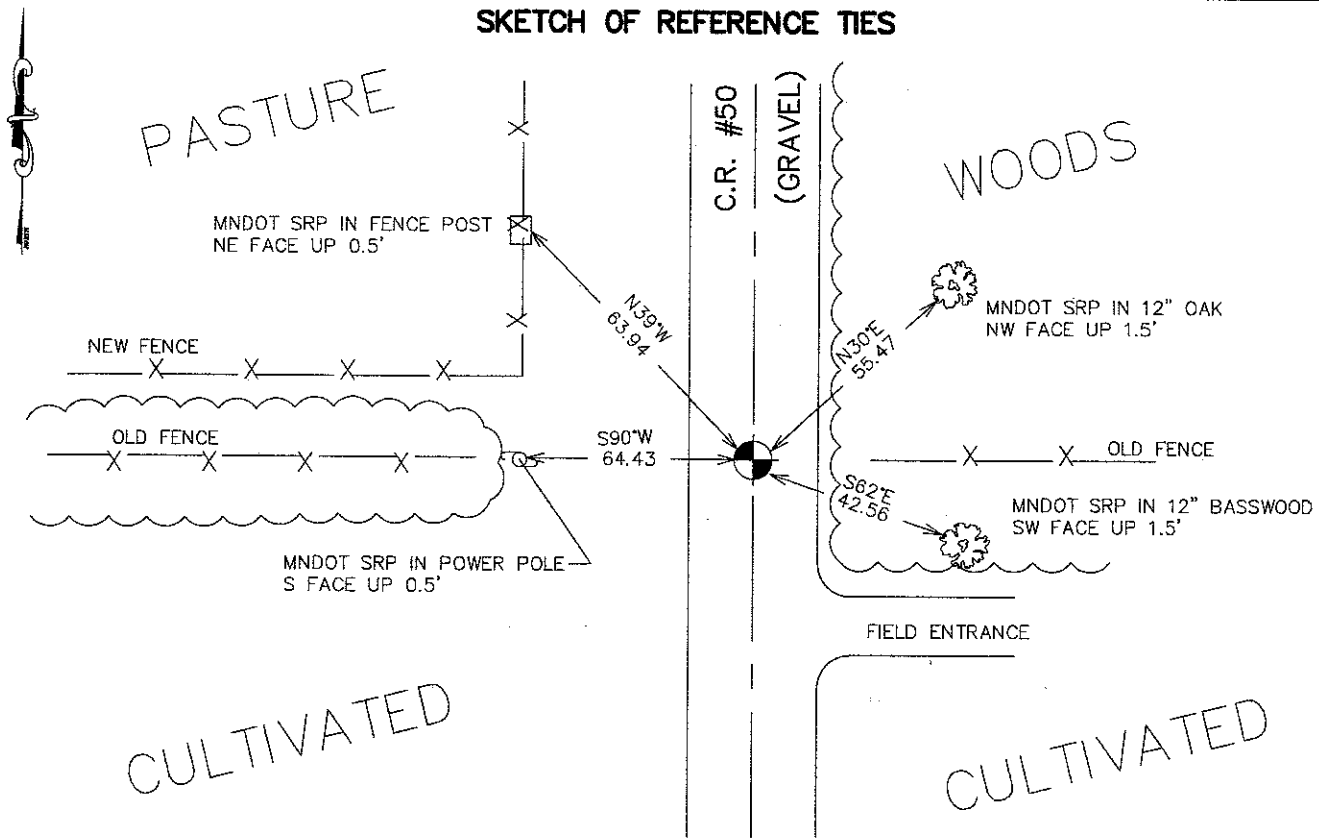
Northing= 119796.02

Easting= 364619.02

Note: NAD 1983, HARN 1996 Adjustment
coordinates are NOT compatible with
NAD 1983 coordinates

Note: 1 Meter=3937/1200 U.S. Survey Feet

SKETCH OF REFERENCE TIES



NOTE: OLD FENCE IS 9.0 FEET SOUTH OF NEW FENCE

Statement of evidence relative to this corner location is on back of page.

I hereby certify that this document and the data contained herein was prepared by me or under my direct supervision.

Ernest J. Red 8-31-2007
Signature Date

Registration No. Minn # 9808

Land Surveyor, Professional Engineer

County Surveyor, County Engineer

OFFICE OF THE COUNTY RECORDER

County of _____

I hereby certify that this document was filed in the County Recorder's office at _____ M. on the _____ day of _____ A.D., 20____

County Recorder _____

BY _____ Deputy

DOCUMENT NO. _____

EAST QUARTER CORNER SECTION 15, T38, R25

STATEMENT OF EVIDENCE

The original public land survey was run in 1851 by Mr. D. Higbee, Deputy Surveyor, and a wood post was used to mark the corner. Bearing ties were made to a white birch and a maple tree.

In 1901, a survey of a road in South Fork Township, by Jo1m Nelson, Surveyor, begins at the Northeast Corner of Section 10, and goes South to the Southeast Corner of Section 10, and then goes South to the Southeast Corner of Section 15, T. 38, R. 25. Mr. Nelson does not say what was found at the corners.

In 1999–2002, The Minnesota Department of Transportation made a survey around Section 14, T. 38, R. 25, to locate the existing monuments, lines of occupation, and search areas. This corner falls near the intersection of County Road 50 and fence lines East and West.

On October 31, 2001, The Minnesota Department of Transportation excavated a 4 x 3 foot hole at the intersection of County Road 50 and fence lines East and West. A 20d. nail with a washer was recovered. Nothing else was found.

In January, 2002, The Minnesota Department of Transportation accepted the found nail and washer as the perpetuation of the location of the Corner. The Minnesota Department of Transportation set a cast iron cap, with a brass center, on a 30–inch long telespar tube, to mark the corner. New bearing ties were made to an oak, a basswood, a power pole, and a fence post. The Minnesota Department of Transportation accepts this position as the correct location for the Corner.

In 2006 E.G. Rud and Sons established Kanabec County Coordinates on this corner.