

CERTIFICATE OF LOCATION OF GOVERNMENT CORNER

NORTH QUARTER Corner of Section 23, Township 38, Range 25, 4TH P.M.

STATE OF MINNESOTA, County of KANABEC

At the corner location shown on the sketch:

FOUND THIS MONUMENT
AND ESTABLISHED KANABEC COUNTY COORDINATES ON ITS LOCATION.

Kanabec County U.S. Survey Feet Coordinates
NAD 1983, HARN 1996 Adjustment
Obtained by RTK GPS Observation

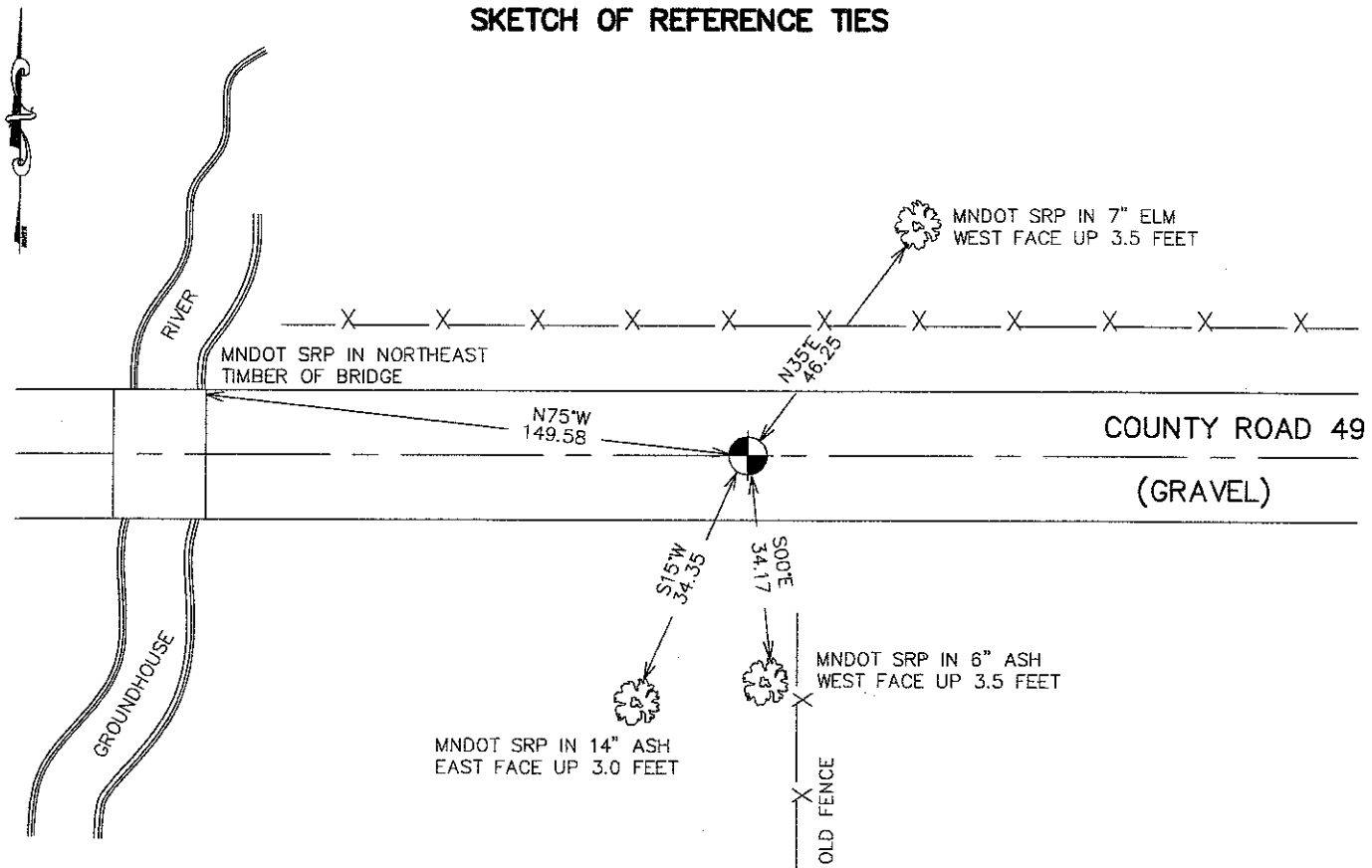
Northing= 116957.55

Easting= 367309.32

Note: NAD 1983, HARN 1996 Adjustment
coordinates are NOT compatible with
NAD 1983 coordinates

Note: 1 Meter=3937/1200 U.S. Survey Feet

SKETCH OF REFERENCE TIES



Statement of evidence relative to this corner location is on back of page.

I hereby certify that this document and the data contained herein was prepared by me or under my direct supervision.

Ernest [Signature]
Signature

8-31-2007
Date

Registration No. Minn # 9808

Land Surveyor, Professional Engineer

County Surveyor, County Engineer

OFFICE OF THE COUNTY RECORDER

County of _____

I hereby certify that this document was filed in the County Recorder's office at _____ M. on the _____ day of _____ A.D., 20____

County Recorder _____

BY _____ Deputy

DOCUMENT NO. _____

NORTH QUARTER CORNER SECTION 23, T38, R25

STATEMENT OF EVIDENCE

The original public land survey was run in 1851 by Mr. D. Higbee, Deputy Surveyor, and a wood post was used to mark the corner. Bearing ties were made to two black ash trees.

In 1999–2002, The Minnesota Department of Transportation made a survey around Sections 14 and 23, T. 38, R. 25, to locate the existing monuments, lines of occupation, and search areas. This corner falls near the intersection of the centerline of County Road 49 and a fence line to the South.

On June 2, 1999, The Minnesota Department of Transportation excavated a 6 x 12 x 5 foot hole on the intersection of road and fence line. A 20d nail with washer was recovered down 0.6, and a 3 inch diameter sharpened wood post was recovered down 4.5 feet below the found nail and washer. Nothing else was found. In January, 2002, The Minnesota Department of Transportation accepted the found wood post as the location of the corner. The Minnesota Department of Transportation set a cast iron cap, with a brass center, on a 30 inch long telespar tube, to mark the corner. New bearing ties were made to two ash, one elm, and a bridge timber. The Minnesota Department of Transportation accepts this position as the correct location for the corner.

In 2006 E.G. Rud and Sons established Kanabec County Coordinates on this corner.