

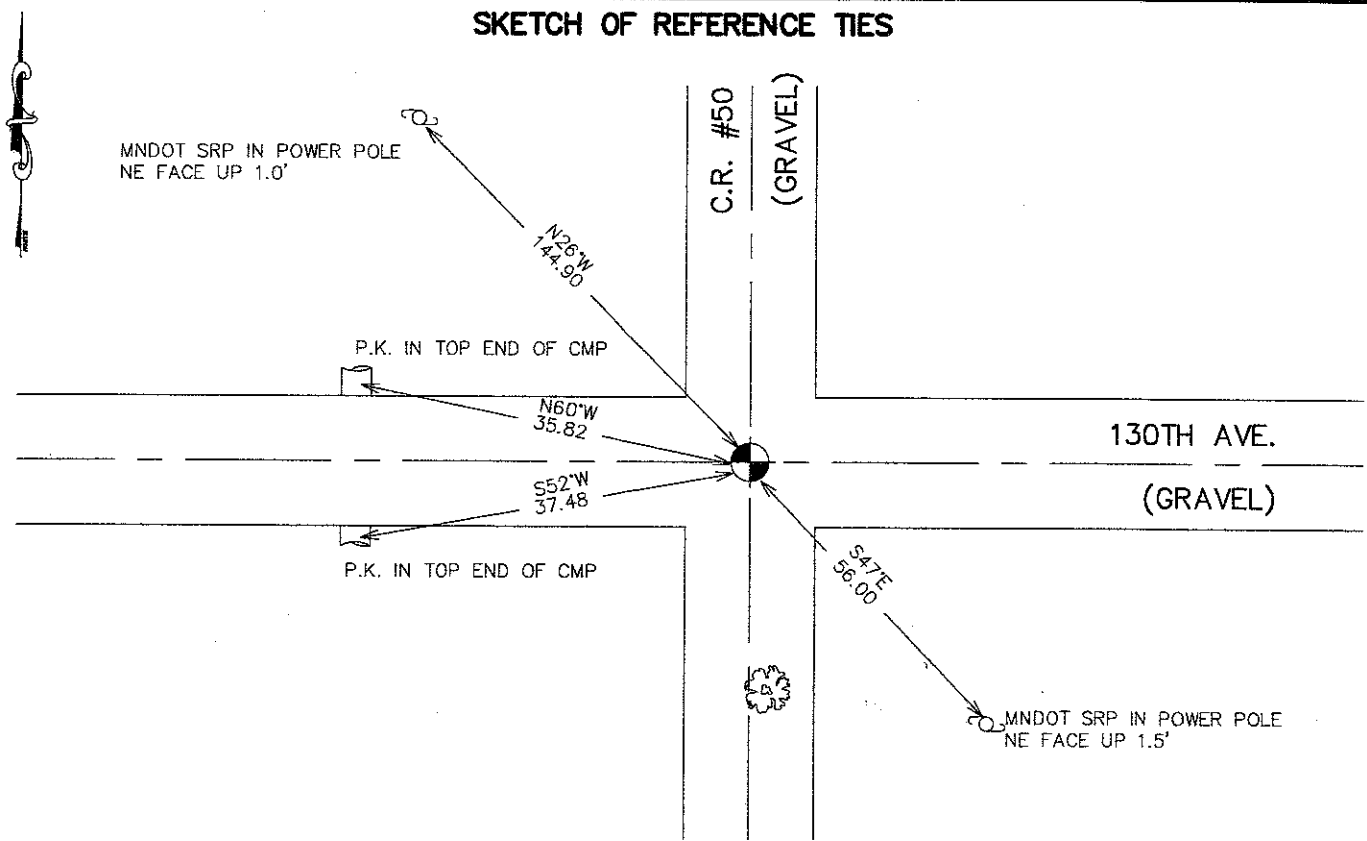
# CERTIFICATE OF LOCATION OF GOVERNMENT CORNER

NORTHEAST Corner of Section 22, Township 38, Range 25, 4TH P.M.  
 STATE OF MINNESOTA, County of KANABEC

At the corner location shown on the sketch:  
**FOUND THIS MONUMENT  
 AND ESTABLISHED KANABEC COUNTY COORDINATES ON ITS LOCATION.**

Kanabec County U.S. Survey Feet Coordinates  
 NAD 1983, HARN 1996 Adjustment  
 Obtained by RTK GPS Observation  
 Northing= 117138.63  
 Easting= 364580.68  
 Note: NAD 1983, HARN 1996 Adjustment  
 coordinates are NOT compatible with  
 NAD 1983 coordinates  
 Note: 1 Meter=3937/1200 U.S. Survey Feet

### SKETCH OF REFERENCE TIES



Statement of evidence relative to this corner location is on back of page.

I hereby certify that this document and the data contained herein was prepared by me or under my direct supervision.

Ernest Blud 8-31-2007  
 Signature Date

Registration No. Minn No 9808

Land Surveyor,  Professional Engineer  
 County Surveyor,  County Engineer

### OFFICE OF THE COUNTY RECORDER

County of \_\_\_\_\_

I hereby certify that this document was filed in the County Recorder's office at \_\_\_\_\_ M. on the \_\_\_\_\_ day of \_\_\_\_\_ A.D., 20\_\_\_\_

County Recorder \_\_\_\_\_

BY \_\_\_\_\_ Deputy

**DOCUMENT NO.** \_\_\_\_\_

## NORTHEAST CORNER SECTION 22, T38, R25

### STATEMENT OF EVIDENCE

The original public land survey was run in 1851 by Mr. D. Higbee, Deputy Surveyor, and a wood post was used to mark the corner. Bearing ties were made to a poplar and an elm.

In an undated survey, recorded in Surveyor's Record Book A, Page 234, Mr. I.B. Vickery, Surveyor, surveyed Section 22, T. 38, R. 25, but he does not say what was found or set for the corners.

A 1901 survey of a road in South Fork Township, by John Nelson, Surveyor, begins at the Northeast Corner of Section 10, and goes South to the Southeast Corner of Section 10, and then goes South to the Southeast Corner of Section 15, T. 38, R. 25. Mr. Nelson does not say: what was found at the corners.

In 1999–2002, The Minnesota Department of Transportation made a survey around Sections 14 and 23, T. 38, R. 25, to locate the existing monuments, lines of occupation, and search areas. This corner falls near the intersection of County Road 50 and a Township Road (130th Ave.).

On June 2, 1999, The Minnesota Department of Transportation excavated a 6 x 6 x 5 foot hole on the intersection of roads. An iron pipe with a nail was recovered down 0.7 feet, a boat spike was recovered 1.2 feet down, under the found pipe. Nothing else was found.

In January, 2002, The Minnesota Department of Transportation accepted the found pipe with nail as the location of the corner. The Minnesota Department of Transportation set a cast iron cap, with a brass center, on a 30 inch long telespar tube, to mark the corner. New bearing ties were made to two power poles and two culvert ends. The Minnesota Department of Transportation accepts this position as the correct location for the corner.

In 2006 E.G. Rud and Sons established Kanabec County Coordinates on this corner.