

CERTIFICATE OF LOCATION OF GOVERNMENT CORNER

EAST QUARTER Corner of Section 22, Township 38, Range 25, 4TH P.M.

STATE OF MINNESOTA, County of KANABEC

At the corner location shown on the sketch:

FOUND THIS MONUMENT
AND ESTABLISHED KANABEC COUNTY COORDINATES ON ITS LOCATION.

Kanabec County U.S. Survey Feet Coordinates
NAD 1983, HARN 1996 Adjustment
Obtained by RTK GPS Observation

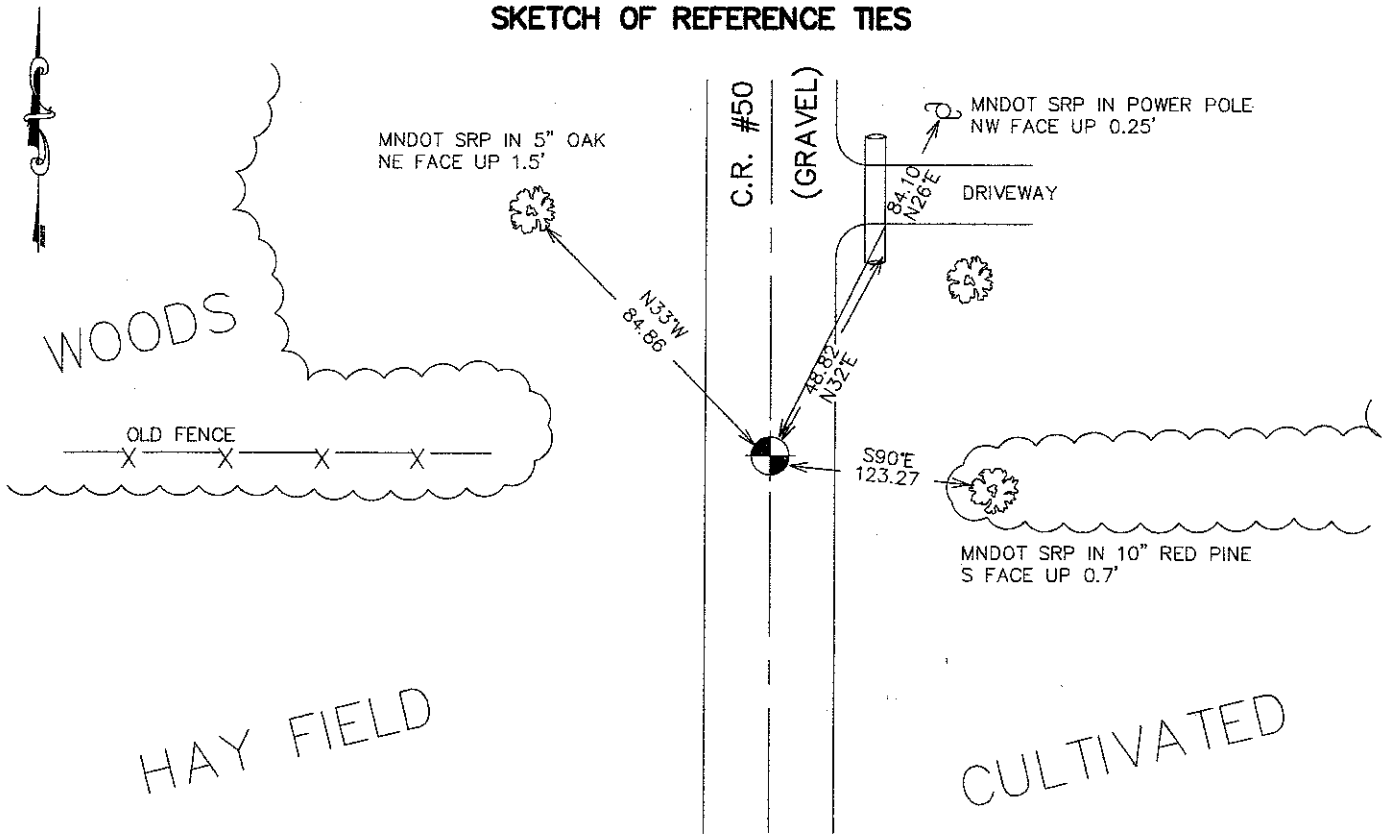
Northing= 114474.52

Easting= 364570.24

Note: NAD 1983, HARN 1996 Adjustment
coordinates are NOT compatible with
NAD 1983 coordinates

Note: 1 Meter=3937/1200 U.S. Survey Feet

SKETCH OF REFERENCE TIES



Statement of evidence relative to this corner location is on back of page.

I hereby certify that this document and the data contained herein was prepared by me or under my direct supervision.

Ernest Alred
Signature

8-31-2007
Date

Registration No. Miss No. 9808

Land Surveyor, Professional Engineer

County Surveyor, County Engineer

OFFICE OF THE COUNTY RECORDER

County of _____

I hereby certify that this document was filed in the County Recorder's office at _____ M. on the _____ day of _____ A.D., 20____

County Recorder _____

BY _____ Deputy

DOCUMENT NO. _____

EAST QUARTER CORNER SECTION 22, T38, R25

STATEMENT OF EVIDENCE

The original public land survey was run in 1851 by Mr. D. Higbee, Deputy Surveyor, and a wood post was used to mark the corner. Bearing ties were made to sugar maple and a white birch tree.

In an undated survey, Recorded in Surveyor's Record Book A, Page 234, by T.B. Vickery, Surveyor, Section 22 was surveyed. He did not say what was found or set for the corners.

In 1901, there is a road survey on file, by John Nelson, County Surveyor, showing the distances along the East line of Section 22, but this survey does not state what was found or set at the Section or Quarter Corners.

In 1999–2002, The Minnesota Department of Transportation made a survey around Section 23, T. 38, R. 25, to locate the existing monuments, lines of occupation, and search areas. This corner falls near the intersection of County road 50, North and South, and an old fence line West.

On June 2, 1999, The Minnesota Department of Transportation excavated a 6 foot x 12 foot x 4 foot deep area at the intersection of the road and fence. No evidence of the corner was found.

In January, 2002, The Minnesota Department of Transportation determined the corner location by computing a position midway and on line between Section Corners. The Minnesota Department of Transportation set a cast iron cap with a brass center on a 30 inch long telespar tube to mark the corner. New bearing ties were made to an oak, a pine, a culvert end, and a power pole. The Minnesota Department of Transportation accepts this position as the correct location for the corner.

In 2006 E.G. Rud and Sons established Kanabec County Coordinates on this corner.