

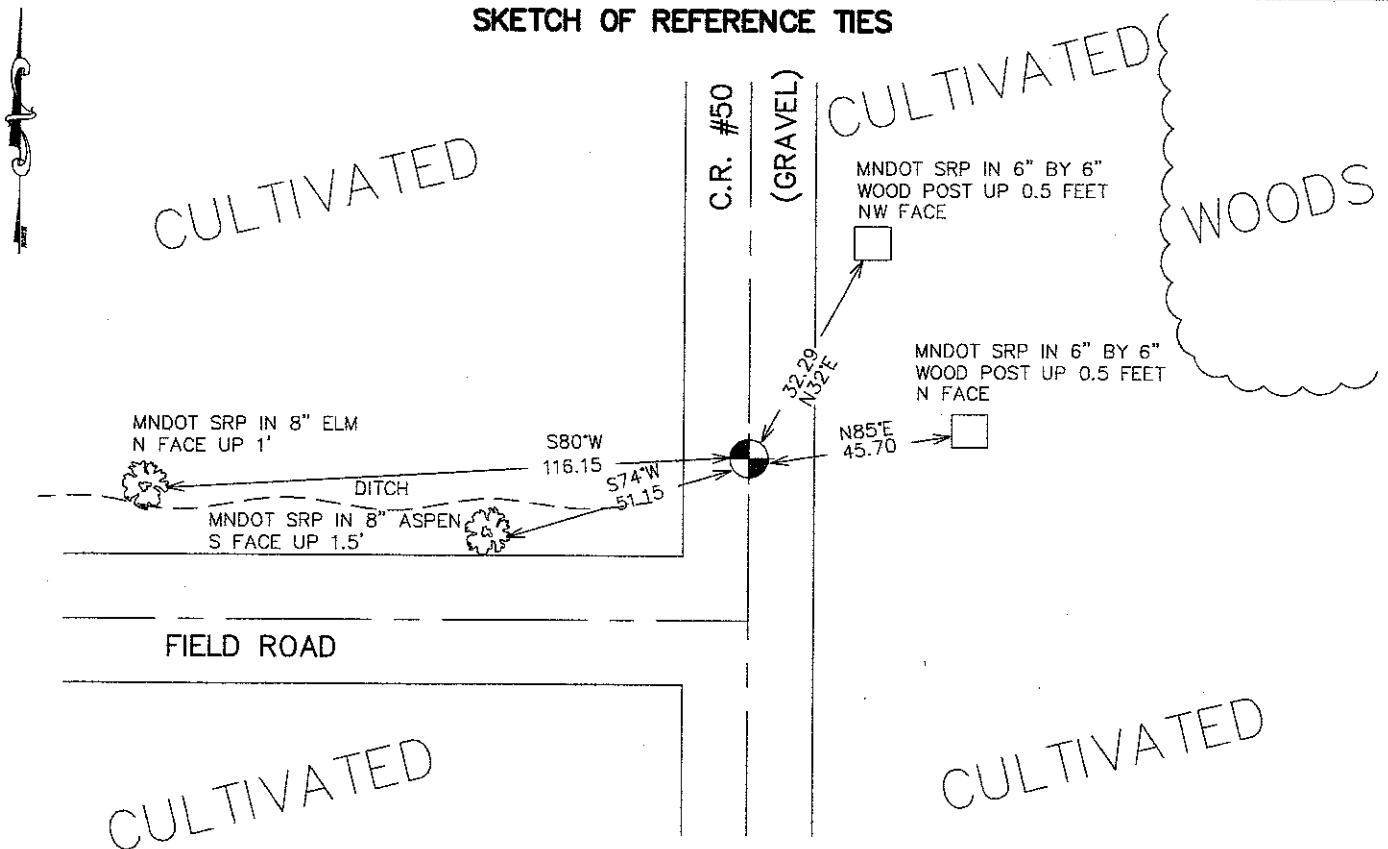
CERTIFICATE OF LOCATION OF GOVERNMENT CORNER

EAST QUARTER Corner of Section 27, Township 38, Range 25, 4TH P.M.
 STATE OF MINNESOTA, County of KANABEC

At the corner location shown on the sketch:
 FOUND THIS MONUMENT
 AND ESTABLISHED KANABEC COUNTY COORDINATES ON ITS LOCATION.

Kanabec County U.S. Survey Feet Coordinates
 NAD 1983, HARN 1996 Adjustment
 Obtained by RTK GPS Observation
 Northing= 109152.87
 Easting= 364550.94
 Note: NAD 1983, HARN 1996 Adjustment
 coordinates are NOT compatible with
 NAD 1983 coordinates
 Note: 1 Meter=3937/1200 U.S. Survey Feet

SKETCH OF REFERENCE TIES



Statement of evidence relative to this corner location is on back of page.

I hereby certify that this document and the data contained herein was prepared by me or under my direct supervision.

Ernest [Signature] 8-31-2007
Signature Date

Registration No. Minn No 9808

- Land Surveyor, Professional Engineer
 County Surveyor, County Engineer

OFFICE OF THE COUNTY RECORDER

County of _____

I hereby certify that this document was filed in the County Recorder's office at _____ M. on the _____ day of _____ A.D., 20____

County Recorder _____

BY _____ Deputy

DOCUMENT NO. _____

EAST QUARTER CORNER SECTION 27, T38, R25

STATEMENT OF EVIDENCE

The original public land survey was run in 1851 by Mr. D. Higbee, Deputy Surveyor, and a wood post was used to mark the corner. Bearing ties were made to two pine trees.

Township Board records show that in 1914 and 1923 approvals were given for the road to be built on the West line of Section 26.

In 1999–2002, The Minnesota Department of Transportation made a survey around Section 26, T. 38 N., R. 25 W., to locate the existing monuments, lines of occupation, and search areas. This corner falls near the intersection of County Road 50 and an old fence line West.

On June 2, 1999, The Minnesota Department of Transportation excavated a 6 x 10 x 2.5 foot hole at the intersection of the centerline of road and occupation West. No evidence of the corner was found.

In January, 2002, The Minnesota Department of Transportation determined the corner location by accepting the intersection of the centerline of County Road 50 and a fence line West. The Minnesota Department of Transportation set a cast iron cap, with a brass center, on a 30-inch long telespar tube, to mark the corner. New bearing ties were made to two fence posts, an aspen, and an elm. The Minnesota Department of Transportation accepts this position as the correct location for the corner.

In 2006 E.G. Rud and Sons established Kanabec County Coordinates on this corner.