

# CERTIFICATE OF LOCATION OF GOVERNMENT CORNER

NORTH QUARTER Corner of Section 35, Township 38, Range 25, 4TH P.M.

STATE OF MINNESOTA, County of KANABEC

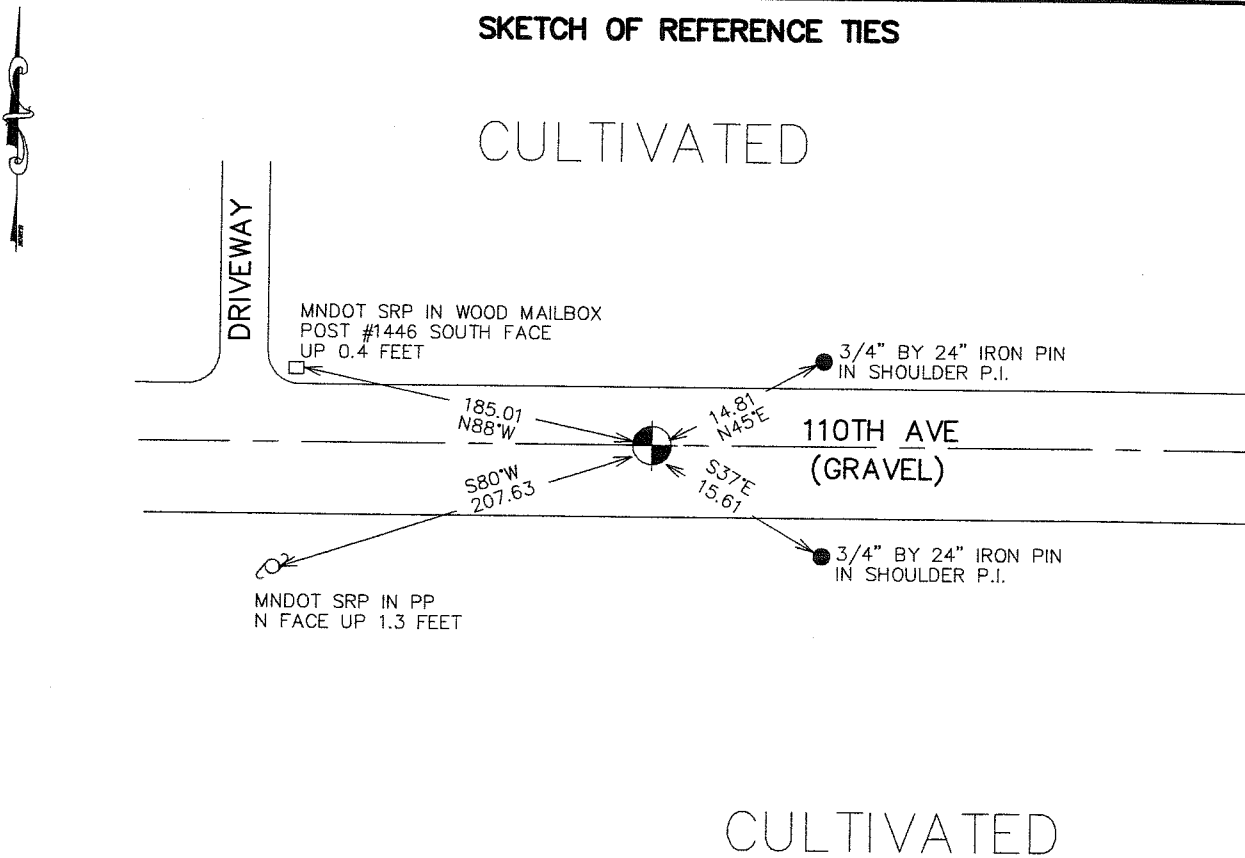
At the corner location shown on the sketch:  
 FOUND THIS CORNER  
 AND ESTABLISHED G.P.S. COORDINATES ON ITS LOCATION

Kanabec County U.S. Survey Feet Coordinates  
 NAD 1983, HARN 1996 Adjustment  
 Obtained by RTK GPS Observation

Northing= 106358.33  
 Easting= 367192.83

Note: NAD 1983, HARN 1996 Adjustment  
 coordinates are NOT compatible with  
 NAD 1983 coordinates  
 Note: 1 Meter=3937/1200 U.S. Survey Feet

## SKETCH OF REFERENCE TIES



Statement of evidence relative to this corner location is on back of page.

I hereby certify that this document and the data contained herein was prepared by me or under my direct supervision.

Ernest Reed 3-30-2007  
 Signature Date

Registration No. Minn No 9808

Land Surveyor,  Professional Engineer  
 County Surveyor,  County Engineer

### OFFICE OF THE COUNTY RECORDER

County of \_\_\_\_\_

I hereby certify that this document was filed in the County Recorder's office at \_\_\_\_\_ M. on the

\_\_\_\_\_ day of \_\_\_\_\_ A.D., 20\_\_

County Recorder \_\_\_\_\_

BY \_\_\_\_\_ Deputy

DOCUMENT NO. \_\_\_\_\_

## NORTH QUARTER CORNER SECTION 35, T38, R25

### STATEMENT OF EVIDENCE

THE ORIGINAL PUBLIC LAND SURVEY WAS RUN IN 1851 BY MR. D. HIGBEE, DEPUTY SURVEYOR, AND A WOOD POST WAS USED TO MARK THE CORNER. BEARING TIES WERE MADE TO A MAPLE AND AN ELM TREE.

IN 1911, JOHN NELSON, COUNTY SURVEYOR, MADE A ROAD SURVEY BETWEEN SECTIONS 26 AND 35. MR. NELSON SET A SANDSTONE TO MARK THE QUARTER CORNER, RECORDED IN SURVEYOR'S BOOK A, PAGE 100.

IN 1999-2002, THE MINNESOTA DEPARTMENT OF TRANSPORTATION EXCAVATED A 4 X 20 X 3 FOOT HOLE ON THE CENTERLINE OF THE TOWNSHIP ROAD MIDWAY AND ON LINE BETWEEN SECTION CORNERS. NO EVIDENCE OF THE CORNER WAS FOUND.

IN JANUARY, 2002, THE MINNESOTA DEPARTMENT OF TRANSPORTATION COMPUTED THE CORNER LOCATION, MIDWAY, AND ON LINE BETWEEN SECTION CORNERS. THE MINNESOTA DEPARTMENT OF TRANSPORTATION SET A CAST IRON CAP WITH A BRASS CENTER ON A 30 INCH LONG TELESPAR TUBE TO MARK THE CORNER. NEW BEARING TIES WERE MADE TO TWO 3/4 X 24 INCH IRON PINS, A POWER POLE AND A MAILBOX POST. THE MINNESOTA DEPARTMENT OF TRANSPORTATION ACCEPTS THIS POSITION AS THE CORRECT LOCATION FOR THE CORNER.

FOR DETAILS AND SURVEY ANALYSIS, CONTACT THE MINNESOTA DEPARTMENT OF TRANSPORTATION DISTRICT SURVEYS OFFICE IN BAXTER, MINNESOTA.

IN APRIL 2003 E.G. RUD AND SONS ESTABLISHED KANABEC COUNTY COORDINATES ON THIS LOCATION USING G.P.S. EQUIPMENT.