

CERTIFICATE OF LOCATION OF GOVERNMENT CORNER

Northeast Corner of Section 34, Township 38, Range 25, W P.M.

STATE OF MINNESOTA, County of KANABEC

At the corner location shown on the sketch:

We found monument set by M.H.D.

Kanabec County U.S. Survey Feet Coordinates
NAD 1983, HARN 1996 Adjustment
Obtained by RTK GPS Observation

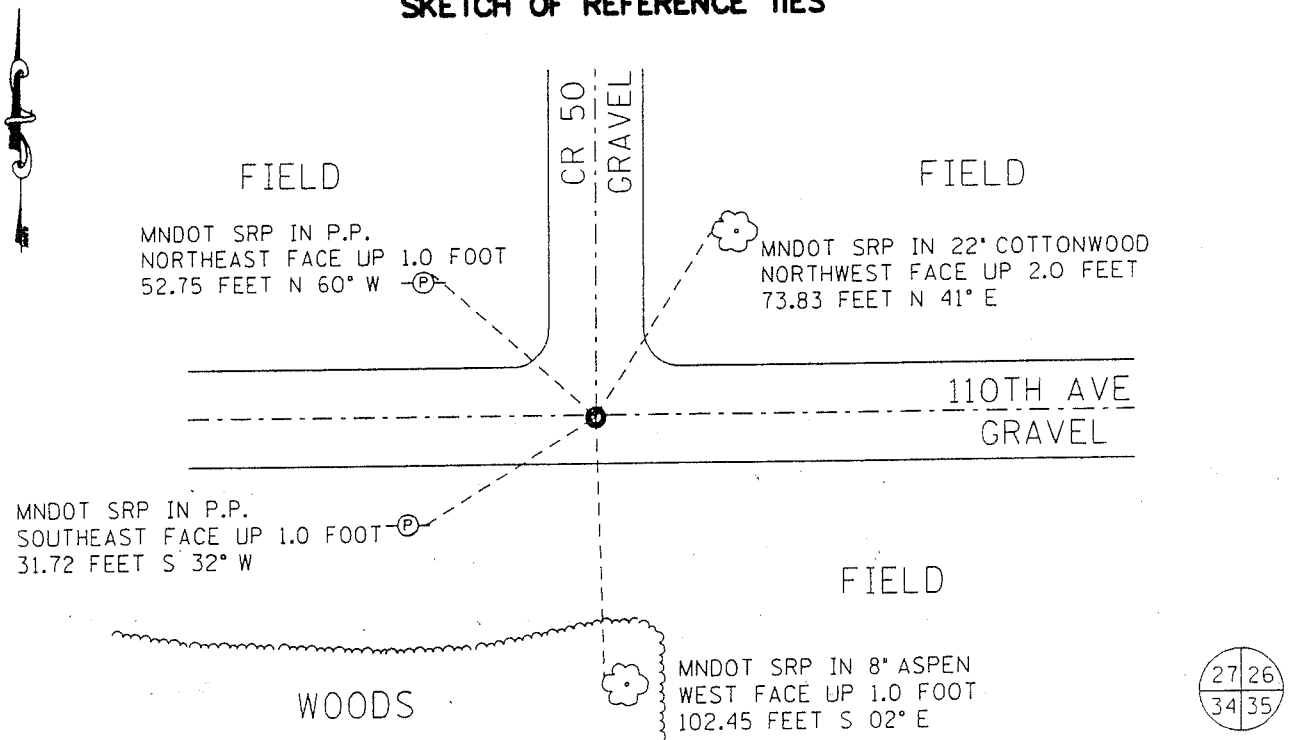
Northing= 106513.559

Easting= 364537.509

Note: NAD 1983, HARN 1996 Adjustment
coordinates are NOT compatible with
NAD 1983 coordinates

Note: 1 Meter=3937/1200 U.S. Survey Feet

SKETCH OF REFERENCE TIES



Statement of evidence relative to this corner location is on back of page.

I hereby certify that this document and the data contained herein was prepared by me or under my direct supervision.

Ernest J. Rud
Signature

April 30, 2004
Date

Registration No. 9808

Land Surveyor, Professional Engineer

County Surveyor, County Engineer

OFFICE OF THE COUNTY RECORDER

County of _____

I hereby certify that this document was filed in the County Recorder's office at _____ M. on the

_____ day of _____ A.D., 20__

County Recorder _____

BY _____ Deputy

DOCUMENT NO. _____

Statement of Evidence: Northeast Corner of Section 34, Township 38 North, Range 25 West, 4th Principal Meridian, Kanabec County, Minnesota.

The original public land survey was run in 1851 by Mr. D. Higbee, Deputy Surveyor, and a wood post was used to mark the corner. Bearing ties were made to a tamarack and a pine.

In July, 1911, John Nelson, County Surveyor, surveyed a road on the South line of Section 26, T 38 N., R.25 W.. Mr. Nelson found an old stake and one stump from an old bearing tree. He set a new stake with stones around it, and made a new bearing tie to a pine. Recorded in Surveyor's Book A, Page 100.

On March 18, 1925, George H. Jinks, County Surveyor, placed a stone with a "+" and made new reference ties to a fence post and a power pole. Recorded on Document Index Number 56.

In 1999-2002, The Minnesota Department of Transportation made a survey around Sections 26 and 35, T.38, R.25, to locate the existing monuments, lines of occupation, and search areas. This corner falls in the intersection of County Road 50 North, and a Township Road (110th Ave.), East and West. A field division line runs to the South.

On June 2, 1999, The Minnesota Department of Transportation excavated a 12 x 15 x 3 foot hole on the centerline of roads. No evidence of the corner was found.

In January, 2002, The Minnesota Department of Transportation accepted the occupation position, witnessed by the intersection of County Road 50 to the North, and a Township Road (110th Ave.) East and West, as a perpetuation of the original location of the corner. The Minnesota Department of Transportation set a Minn. Highway Dept. cast iron monument to mark the corner. New bearing ties were made to two power poles, a cottonwood and an aspen. The Minnesota Department of Transportation accepts this position as the correct location for the corner.

For details and survey analysis, contact the Minnesota Department of Transportation District Surveys Office in Baxter, Minnesota.

In April 2004 E.G. Rud did a survey around Sections 26, 27, 28, 29, 33 & 34. We found the monument set by M.H.D. We established Kanabec County coordinates on this position using G.P.S. equipment.