

CERTIFICATE OF LOCATION OF GOVERNMENT CORNER

EAST QUARTER Corner of Section 2, Township 38, Range 25, 4TH P.M.

STATE OF MINNESOTA, County of KANABEC

At the corner location shown on the sketch:
FOUND THIS MONUMENT
AND ESTABLISHED G.P.S. COORDINATES ON ITS LOCATION.

Kanabec County U.S. Survey Feet Coordinates
NAD 1983, HARN 1996 Adjustment
Obtained by RTK GPS Observation

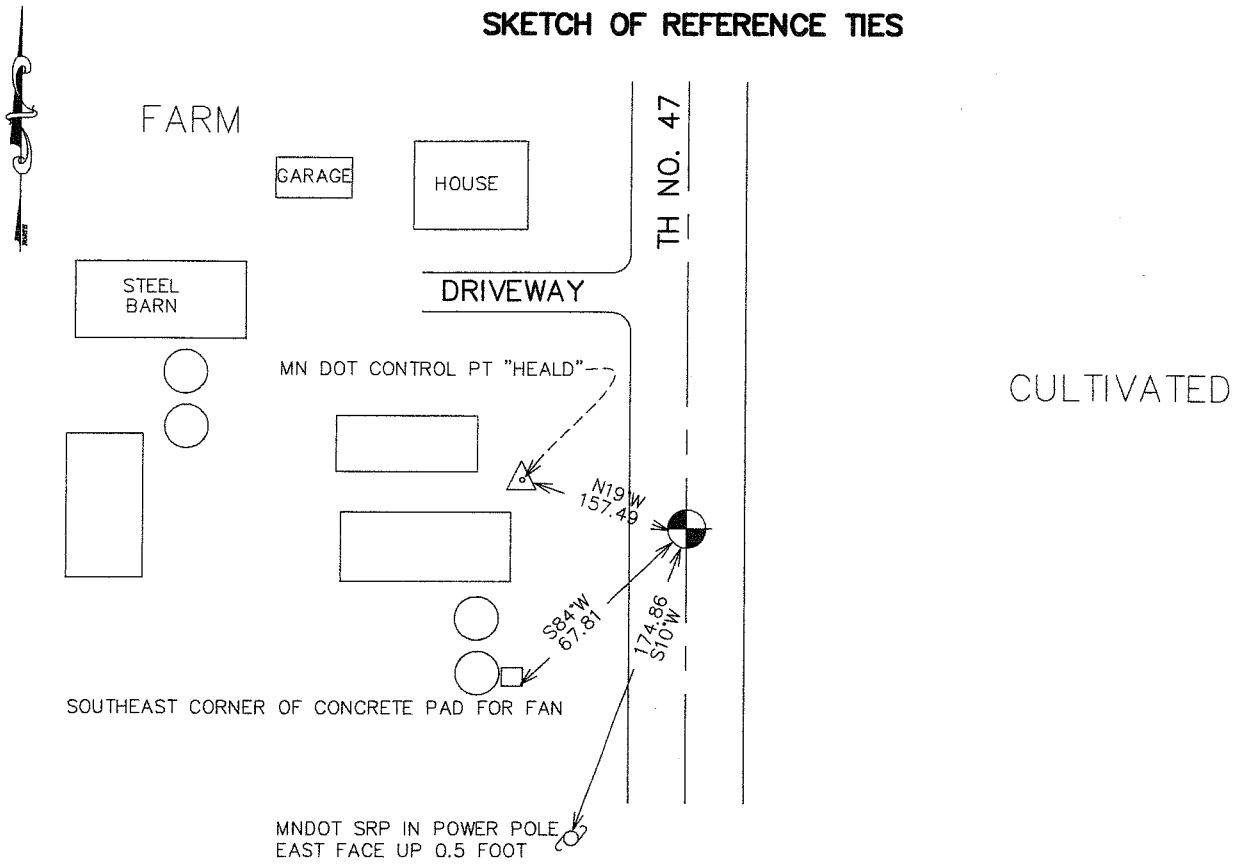
Northing= 130038.2600

Easting= 370026.9400

Note: NAD 1983, HARN 1996 Adjustment
coordinates are NOT compatible with
NAD 1983 coordinates

Note: 1 Meter=3937/1200 U.S. Survey Feet

SKETCH OF REFERENCE TIES



Statement of evidence relative to this corner location is on back of page.

I hereby certify that this document and the data contained herein was prepared by me or under my direct supervision.

Ernest J. Glued 4-19-2007
Signature Date

Registration No. Minn No 9808

Land Surveyor, Professional Engineer

County Surveyor, County Engineer

OFFICE OF THE COUNTY RECORDER

County of _____

I hereby certify that this document was filed in the County Recorder's office at _____ M. on the

_____ day of _____ A.D., 20__

County Recorder _____

BY _____ Deputy

DOCUMENT NO. _____

EAST QUARTER CORNER SECTION 2, T38, R25

STATEMENT OF EVIDENCE

The original public land survey was run in 1851 by Mr. D. Higbee, Deputy Surveyor, and a wood post was used to mark the corner. Bearing ties were made to two pines.

In 1902, The former County Surveyor, John Nelson, made a survey for Ernest Steffens in Section 2, T38, R.25., recorded in County Surveyor's Record Book 2, Page 8. In the survey, Mr. Nelson reestablishes the West Quarter Corner and goes to the East Quarter Corner. No mention of what was found for the corner.

In 1934, The Minnesota Department of Transportation called for the assumed East Quarter Corner of Section 2, 1.38, R25 to be at Engineer's Station 303+99.1, 1.0 foot right of the intersection of fence line east and centerline of north south road. Found in Book No. 24, Page 231, of alignment for S.P. 56-110 Ogilvie, Minn. Land Ties station 0+00 to station 413+ 10.6.

In 1999-2002, The Minnesota Department of Transportation made a survey around Sections 1 and 2, 1.38, R.25, to locate the existing monuments, lines of occupation, and search areas. This corner falls on 1.H. 47.

On November 1, 2001, The Minnesota Department of Transportation excavated a 4 foot x 8 foot x 2 foot hole, using the information from Book 24, Page 231 of alignment for S.P. 56-110 Ogilvie, Minn. Land Ties station 0+00 to station 413+ 10.6. The Minnesota Department of Transportation found a 6 x 6 x 12 inch long sandstone down 2 feet with a chiseled X on top. The stone was removed (because of future road construction) and a $\frac{3}{4}$ " x 24 inch iron pin was placed to mark the corner. New bearing reference ties were made as shown on the front of this sheet. The Minnesota Department of Transportation accepts this position as the correct location for the corner.

For details and survey analysis, contact the Minnesota Department of transportation District Surveys Office in Baxter, Minnesota.

In Oct. 2005, E.G. Rud and Sons found this monument and established Kanabec County Coordinates using G.P.S. equipment.