

# CERTIFICATE OF LOCATION OF GOVERNMENT CORNER

NORTH QUARTER Corner of Section 12, Township 38, Range 25, 4TH P.M.

STATE OF MINNESOTA, County of KANABEC

At the corner location shown on the sketch:

FOUND THIS MONUMENT  
AND ESTABLISHED G.P.S. COORDINATES ON ITS LOCATION.

Kanabec County U.S. Survey Feet Coordinates  
NAD 1983, HARN 1996 Adjustment  
Obtained by RTK GPS Observation

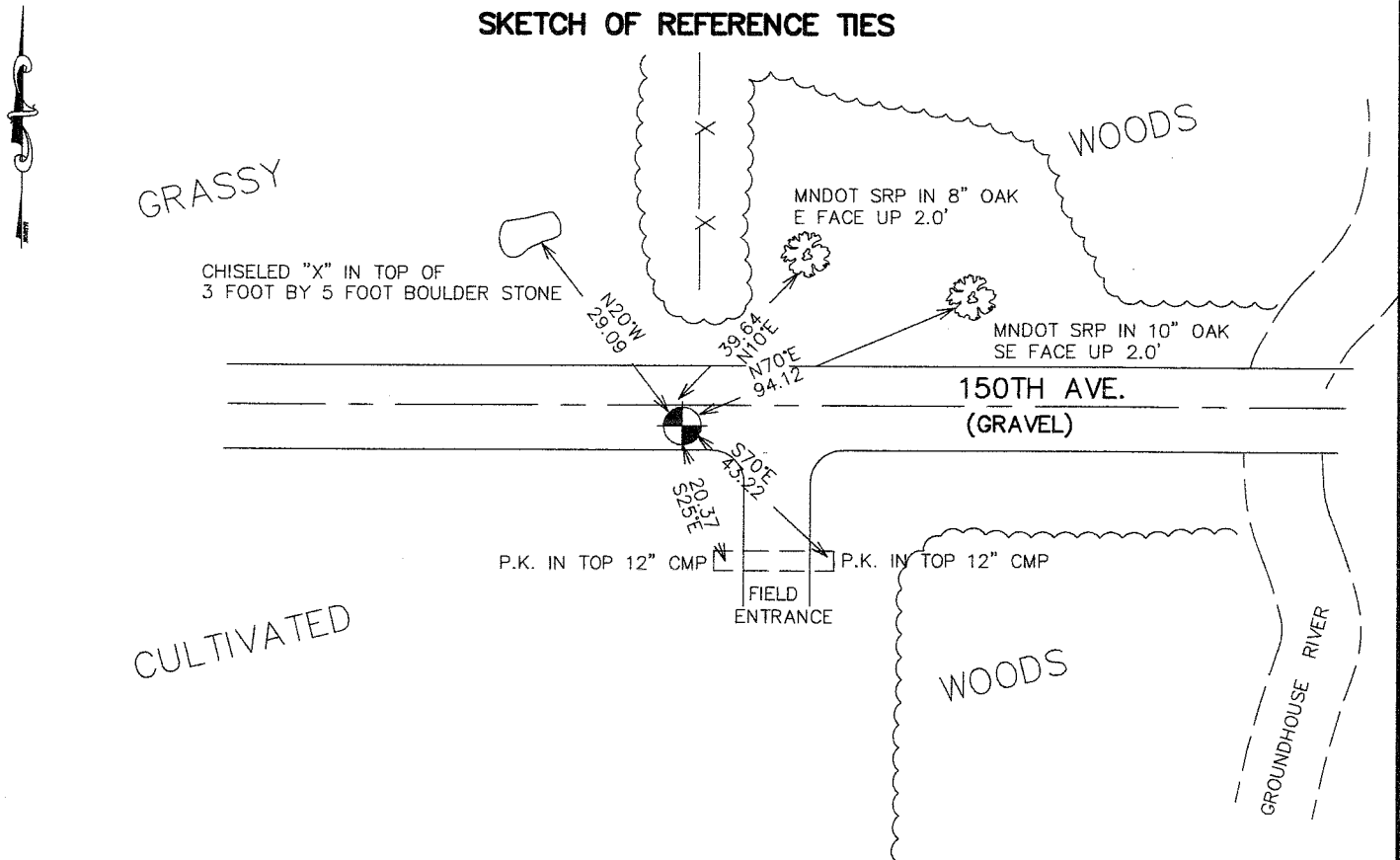
Northing= 127174.07

Easting= 372675.43

Note: NAD 1983, HARN 1996 Adjustment  
coordinates are NOT compatible with  
NAD 1983 coordinates

Note: 1 Meter=3937/1200 U.S. Survey Feet

### SKETCH OF REFERENCE TIES



Statement of evidence relative to this corner location is on back of page.

I hereby certify that this document and the data contained herein was prepared by me or under my direct supervision.

Ernest Alred 3-19-2007  
Signature Date

Registration No. Minn No 9808

Land Surveyor,  Professional Engineer

County Surveyor,  County Engineer

### OFFICE OF THE COUNTY RECORDER

County of \_\_\_\_\_

I hereby certify that this document was filed in the County Recorder's office at \_\_\_\_\_ M. on the \_\_\_\_\_ day of \_\_\_\_\_ A.D., 20\_\_\_\_

County Recorder \_\_\_\_\_

BY \_\_\_\_\_ Deputy

**DOCUMENT NO.** \_\_\_\_\_

## NORTH QUARTER CORNER SECTION 12, T38, R25

### **STATEMENT OF EVIDENCE**

The original public land survey was made in 1851 by Mr. D. Higbee, Deputy Surveyor, and a wood post was used to mark the corner. Bearing ties were made to two pine trees.

In 1912, former County Surveyor, John Nelson, made a survey of a road on the South line of Section 1, T.38, R25. Mr. Nelson reestablishes the North Quarter Corner of Section 12, T.38, R25. A sandstone, marked with an x, was set to mark the corner, and a reference tie to a pine stump was made. Recorded in Surveyor's Record Book A, page 117.

In 1999–2002, The Minnesota Department of Transportation made a survey around Sections 1 and 12, T.38, R.25, to locate the existing monuments, lines of occupation, and search areas. This corner falls near the intersection of a Township Road (150th Ave.) and fence line North.

On November 1, 2001, The Minnesota Department of Transportation excavated a 5 x 20 x 3 foot hole, and a 15 x 5 x 3 foot deep hole using the information from 1912. A square nail with ribbon was found down 0.1 feet, 1.0 feet south of the centerline of 150th avenue, and on an extended fence line to the North. Nothing else was found.

In Jan. 2002, The Minnesota Department of Transportation accepted the square nail as a perpetuation of the original location of the corner. The Minnesota Department of Transportation set a cast iron cap, with a brass center, on a 30 inch long telspar tube, to mark the corner. new bearing reference ties were made to two culvert ends, an oak, a cottonwood, and a chiseled "X" in the top of a stone. The Minnesota Department of Transportation accepts this position as the correct location for the corner.

For details and survey analysis, contact the Minnesota Department of Transportation District Surveys Office in Baxter, Minnesota.

In October 2005 E.G.Rud and Sons located the corner and established Kanabec County Coordinates using G.P.S. equipment.