

CERTIFICATE OF LOCATION OF GOVERNMENT CORNER

NORTHEAST Corner of Section 11, Township 38, Range 25, 4TH P.M.

STATE OF MINNESOTA, County of KANABEC

At the corner location shown on the sketch:

FOUND THIS MONUMENT
AND ESTABLISHED G.P.S. COORDINATES ON ITS LOCATION.

Kanabec County U.S. Survey Feet Coordinates
NAD 1983, HARN 1996 Adjustment
Obtained by RTK GPS Observation

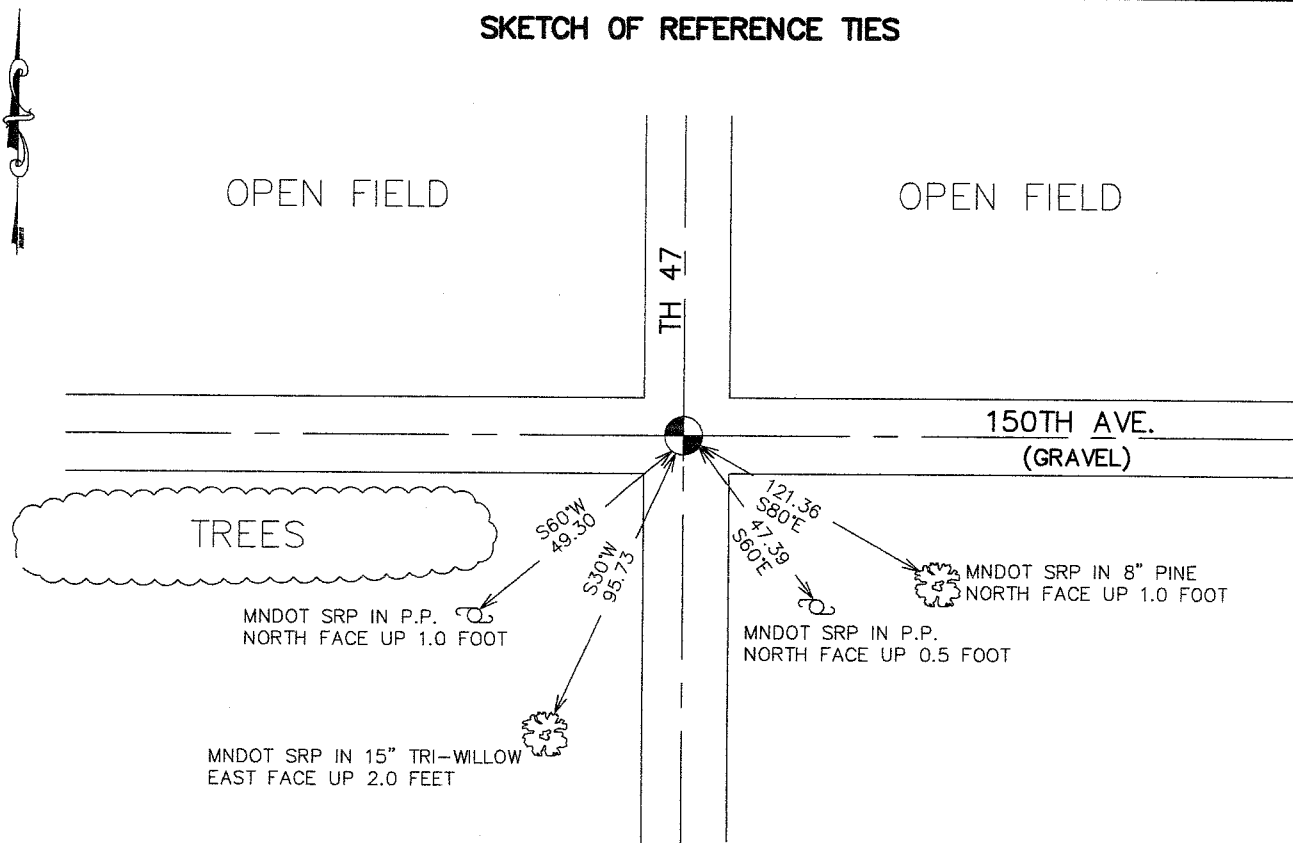
Northing= 127390.49

Easting= 370036.06

Note: NAD 1983, HARN 1996 Adjustment
coordinates are NOT compatible with
NAD 1983 coordinates

Note: 1 Meter=3937/1200 U.S. Survey Feet

SKETCH OF REFERENCE TIES



Statement of evidence relative to this corner location is on back of page.

I hereby certify that this document and the data contained herein was prepared by me or under my direct supervision.

Ernest Blud
Signature

3-23-2007
Date

Registration No. Minn No 9808

Land Surveyor, Professional Engineer

County Surveyor, County Engineer

OFFICE OF THE COUNTY RECORDER

County of _____

I hereby certify that this document was filed in the County Recorder's office at _____ M. on the _____ day of _____ A.D., 20____

County Recorder _____

BY _____ Deputy

DOCUMENT NO. _____

NORTHEAST CORNER SECTION 11, T38, R25

STATEMENT OF EVIDENCE

The original public land survey was run in 1851 by Mr. D. Higbee, Deputy Surveyor, and a wood post was used to mark the corner. Bearing ties were made to two pine trees.

In 1901, former County Surveyor, John Nelson, made a Township Road Order survey in Section 36, T. 39, R. 25, in which he located and established corners. Mr. Nelson commenced the survey at the Southeast Corner of Section 2, T. 38, R. 25, then ran West. Recorded in Road Record Book Number 2, Page 2. No mention of what was found for the corner.

In 1902, former County Surveyor, John Nelson, made a survey, for Ernest Steffens, in Section 2, T. 38, R.25, recorded in County Surveyor's Record Book 2, Page 8. In the survey, Mr. Nelson starts at the Northeast Corner of the Section, and goes to the Southeast Corner. No mention of what was found for the corner.

In 1909, former County Surveyor, John Nelson, made a survey starting at a stake at the Corner common to Sections 1,2,11, and 12, then goes South. Recorded in Surveyor's Record Book A.

In 1912, former County Surveyor, John Nelson, made a survey of a road on the South line of Section 1, T 38, R. 25. Mr. Nelson reestablishes the Northeast Corner of Section 12, T. 38, R. 25, and then goes West to the Corner common to Sections 1,2, 11, and 12. Recorded in Surveyor's Record Book A, Page 117. He does not say what was found.

In 1934, The Minnesota Department of Transportation shows the corner, at Engineer's Station 277+47.2, assumed Northeast Corner Section 11, T. 38, R. 25, to fall on P.I. spike at intersection of centerline of crossroads, in Book No. 24, Page 230, of alignment for S.P. 56-110 Ogilvie, Minn. Land Ties station 0+00 to station 413+10.6.

In 1999-2002, The Minnesota Department of Transportation made a survey around Sections 1,2, 11, and 12, T 38, R. 25, to locate the existing monuments, lines of occupation, and search areas. This corner falls at the intersection of TH. 47 and a Township Road (150th Ave.).

On Nov. 1,2001, The Minnesota Department of Transportation dug a 4-foot by 8-foot by 3-foot hole, with a backhoe, at the intersection of roads. No evidence was found.

In January, 2002, the Corner location was determined by accepting the occupation position evidenced by the centerline intersection of roads. A 7/8 X 24 inch iron pin was placed to mark the corner. New bearing ties were taken to two power poles, a willow, and a pine tree. The Minnesota Department of Transportation accepts this position as the correct location for the corner.

For details and survey analysis, contact the Minnesota Department of Transportation . District Surveys Office in Baxter, Minnesota.

In Oct. 2005, E.G. Rud and Sons found this monument and established Kanabec County Coordinates using G.P.S. equipment.