

CERTIFICATE OF LOCATION OF GOVERNMENT CORNER

EAST QUARTER Corner of Section 11, Township 38, Range 25, 4TH P.M.
STATE OF MINNESOTA, County of KANABEC

At the corner location shown on the sketch:

FOUND THIS MONUMENT
AND ESTABLISHED G.P.S. COORDINATES ON ITS LOCATION.

Kanabec County U.S. Survey Feet Coordinates
NAD 1983, HARN 1996 Adjustment
Obtained by RTK GPS Observation

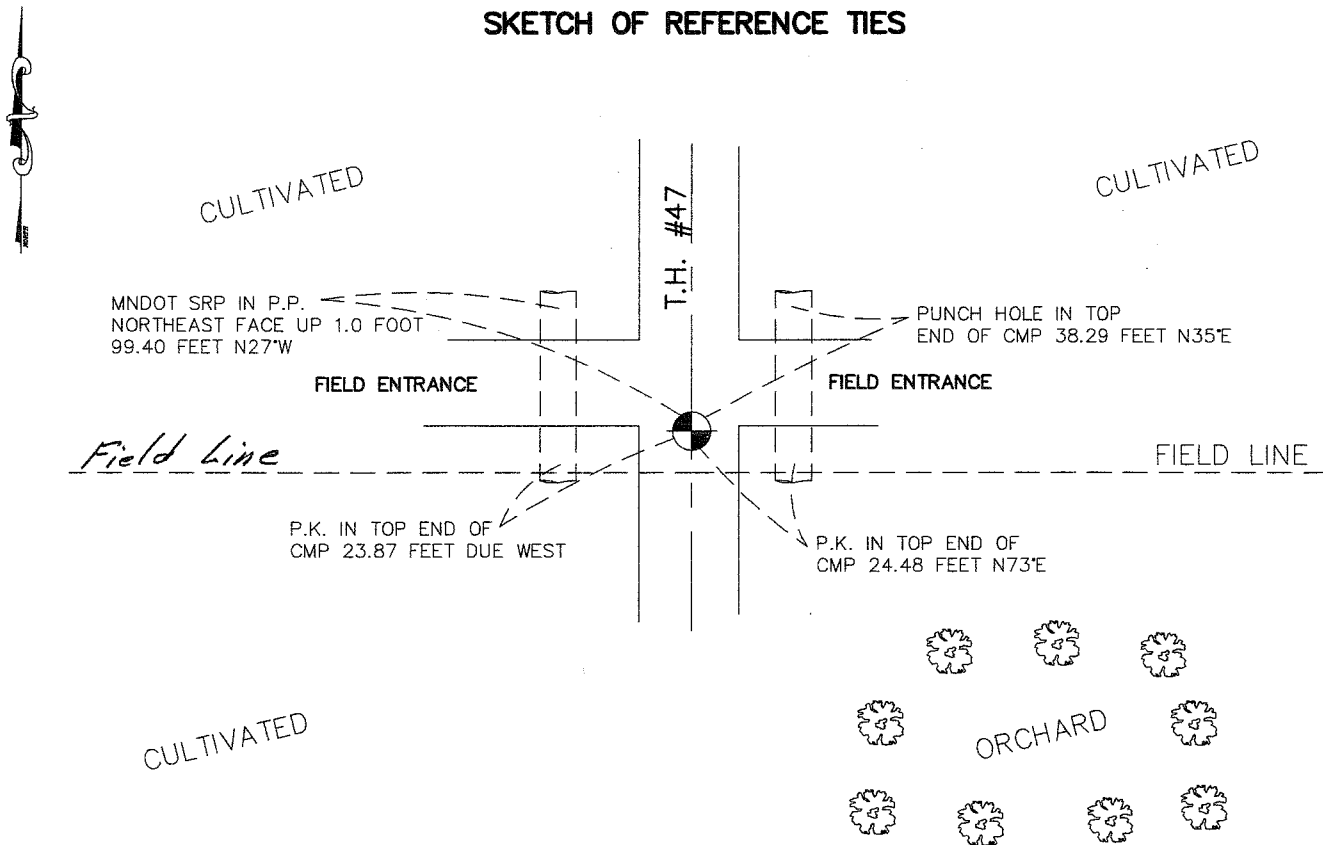
Northing= 124734.72

Easting= 370001.65

Note: NAD 1983, HARN 1996 Adjustment
coordinates are NOT compatible with
NAD 1983 coordinates

Note: 1 Meter=3937/1200 U.S. Survey Feet

SKETCH OF REFERENCE TIES



Statement of evidence relative to this corner location is on back of page.

I hereby certify that this document and the data contained herein was prepared by me or under my direct supervision.

Ernest J. Rud
Signature

3-19-2007
Date

OFFICE OF THE COUNTY RECORDER

County of _____

I hereby certify that this document was filed in the County Recorder's office at _____ M. on the

_____ day of _____ A.D., 20____

County Recorder _____

BY _____ Deputy

DOCUMENT NO. _____

Registration No. Minn No 9808

Land Surveyor, [] Professional Engineer

[] County Surveyor, [] County Engineer

EAST QUARTER CORNER SECTION 11, T38, R25

STATEMENT OF EVIDENCE

The original public land survey was run in 1851 by Mr. D. Higbee, Deputy Surveyor, and a wood post was used to mark the corner. Bearing ties were made to two pine trees.

In 1909, former County Surveyor, John Nelson, made a survey starting at a stake at the Section Corner common to Sections 1, 2, 11 and T.38, R25, then goes South to the Northeast Corner of Section 23, to a found boulder stone. Recorded in Surveyor's Record Book A.

In 1934, The Minnesota Department of Transportation shows the corner at Engineer's Station 250+90.9, in place, East Quarter Corner of Section 11, T.38, R.25, stone monument, marked +, 2.5 feet left off-line, in Book No. 24, Page 230, of alignment for S.P. 56-110 Ogilvie, Minn. Land Ties station 0+00 to station 413+10.6.

In 1999-2002, The Minnesota Department of Transportation made a survey around Sections 11 and 12, T.38, R.25, to locate the existing monuments, lines of occupation, and search areas. This corner falls near the intersection of Trunk Highway 47 and a field division line West and East.

On November 5, 2001, The Minnesota Department of Transportation excavated a 4 x 8 x 3.5 foot hole at the intersection of T.H. 47 and fence lines East and West. This location fits the stationing distances from 1934 Minnesota Department of Transportation alignment notes. No evidence of the corner was found.

In January, 2002, The Minnesota Department of Transportation accepted the occupation location of the intersection of the centerline of Trunk Highway 47 and field division lines West and East, as a perpetuation of the original location of the corner. The Minnesota Department of Transportation set 3/4" x 24 inch iron pin to mark the corner. New bearing ties were made to a power pole and three ends of culverts. The Minnesota Department of Transportation accepts this position as the correct location for the corner.

For details and survey analysis, contact the Minnesota Department of Transportation District Surveys Office in Baxter, Minnesota.

In April 2006, E.G. Rud and Sons established Kanabec County Coordinates using G.P.S. equipment.