

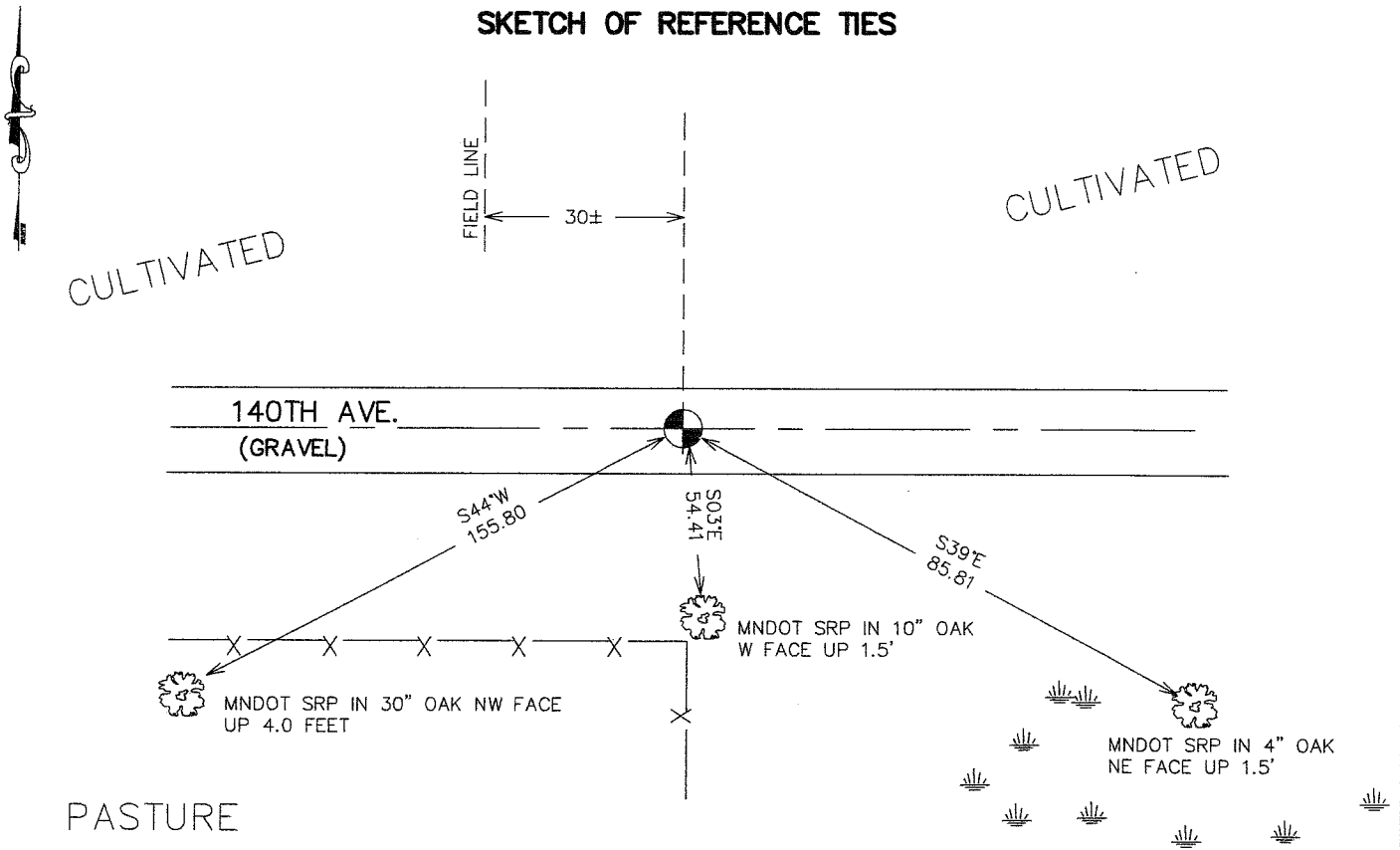
CERTIFICATE OF LOCATION OF GOVERNMENT CORNER

NORTH QUARTER Corner of Section 13, Township 38, Range 25, 4TH P.M.
 STATE OF MINNESOTA, County of KANABEC

At the corner location shown on the sketch:
 FOUND THIS MONUMENT
 AND ESTABLISHED G.P.S. COORDINATES ON ITS LOCATION.

Kanabec County U.S. Survey Feet Coordinates
 NAD 1983, HARN 1996 Adjustment
 Obtained by RTK GPS Observation
 Northing= 121898.45
 Easting= 372634.93
 Note: NAD 1983, HARN 1996 Adjustment
 coordinates are NOT compatible with
 NAD 1983 coordinates
 Note: 1 Meter=3937/1200 U.S. Survey Feet

SKETCH OF REFERENCE TIES



Statement of evidence relative to this corner location is on back of page.

I hereby certify that this document and the data contained herein was prepared by me or under my direct supervision.

Ernest Reed 3-19-2007
 Signature Date

Registration No. Minn No 9808

- Land Surveyor, Professional Engineer
 County Surveyor, County Engineer

OFFICE OF THE COUNTY RECORDER

County of _____

I hereby certify that this document was filed in the County Recorder's office at _____ M. on the _____ day of _____ A.D., 20____

County Recorder _____

BY _____ Deputy

DOCUMENT NO. _____

NORTH QUARTER CORNER SECTION 13, T38, R25

STATEMENT OF EVIDENCE

The original public land survey was run in 1851 by Mr. D. Higbee, Deputy Surveyor, and a wood post was used to mark the corner. Bearing ties were made to two pine trees.

In 1909, former County Surveyor, John Nelson, made a survey of a road on the North line of Section 13, T.38, R25. The survey reestablished the Northwest, North Quarter and the Northeast Corners of Section 13, T. 38, R. 25. Mr. Nelson marked the North Quarter Corner with a sandstone. Recorded in Surveyor's Record Book A.

In 1999–2002, The Minnesota Department of Transportation made a survey around Sections 12 and 13, T. 38, R. 25, to locate the existing monuments, lines of occupation, and search areas. This corner falls near the intersection of a Township Road (140th Ave.), and a fence line to the South.

On November 11, 1999, The Minnesota Department of Transportation excavated a 6 foot x 10 foot x 5 foot deep area at the intersection of road and fence south. Also excavated a 6 foot x 10 foot x 5 foot deep area at the intersection of road and field line north. No evidence of the corner was found.

In January, 2002, The Minnesota Department of Transportation computed the corner location midway and on line between Section Corners. The Minnesota Department of Transportation set a cast iron cap, with a brass center, on a 30 inch long telespar tube, to mark the corner. New bearing ties were made as shown on the front of this sheet. The Minnesota Department of Transportation accepts this position as the correct location for the corner.

For details and survey analysis, contact the Minnesota Department of Transportation District Surveys Office in Baxter, Minnesota.

In April 2006, E.G. Rud and Sons found this monument and established Kanabec County Coordinates using G.P.S. equipment.