

# CERTIFICATE OF LOCATION OF GOVERNMENT CORNER

NORTHEAST Corner of Section 14, Township 38, Range 25, 4TH P.M.

STATE OF MINNESOTA, County of KANABEC

At the corner location shown on the sketch:

FOUND THIS MONUMENT  
AND ESTABLISHED G.P.S. COORDINATES ON ITS LOCATION.

Kanabec County U.S. Survey Feet Coordinates  
NAD 1983, HARN 1996 Adjustment  
Obtained by RTK GPS Observation

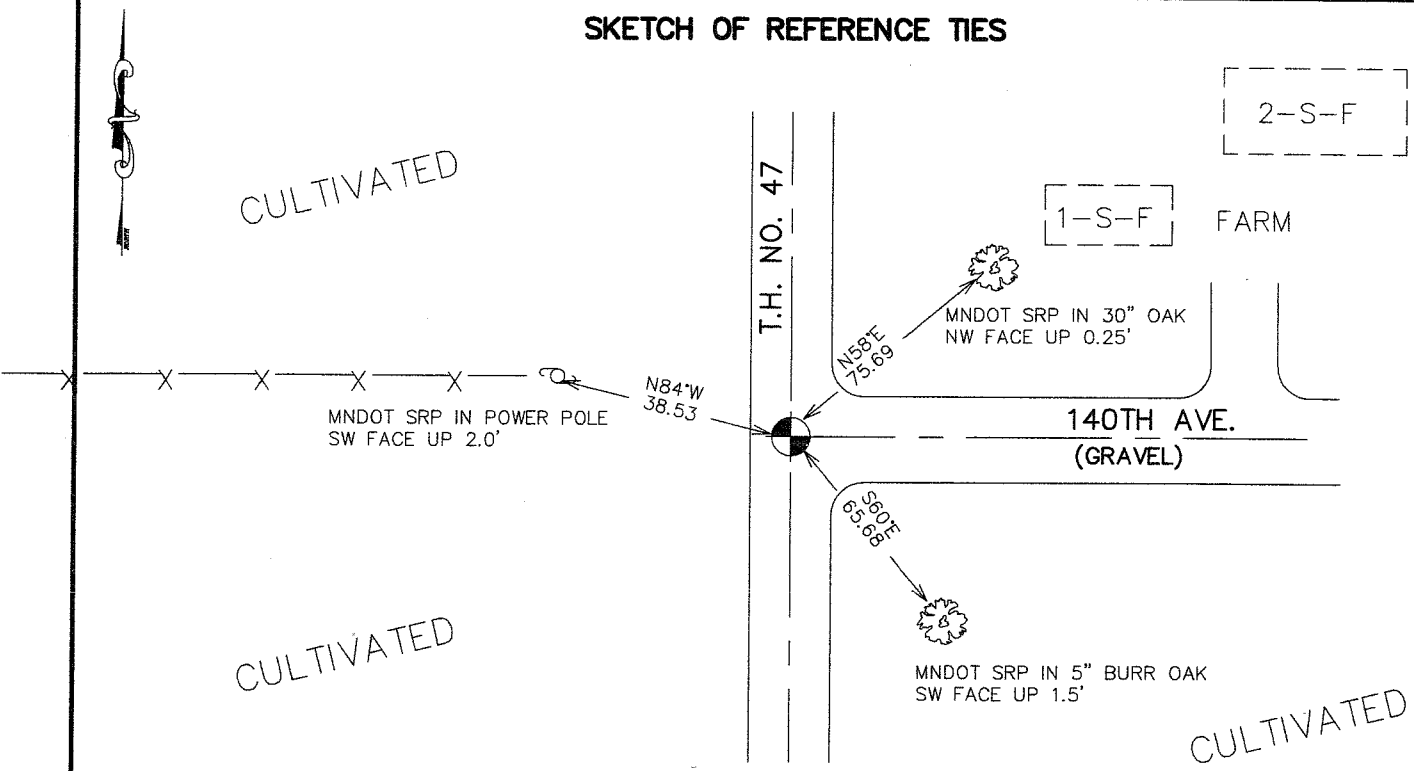
Northing= 122080.21

Easting= 369978.80

Note: NAD 1983, HARN 1996 Adjustment  
coordinates are NOT compatible with  
NAD 1983 coordinates

Note: 1 Meter=3937/1200 U.S. Survey Feet

## SKETCH OF REFERENCE TIES



Statement of evidence relative to this corner location is on back of page.

I hereby certify that this document and the data contained herein was prepared by me or under my direct supervision.

Ernst Hud 3-19-2007  
Signature Date

Registration No. Min No 9808

- Land Surveyor,       Professional Engineer  
 County Surveyor,     County Engineer

### OFFICE OF THE COUNTY RECORDER

County of \_\_\_\_\_

I hereby certify that this document was filed in the County Recorder's office at \_\_\_\_\_ M. on the \_\_\_\_\_ day of \_\_\_\_\_ A.D., 20\_\_\_\_

County Recorder \_\_\_\_\_

BY \_\_\_\_\_ Deputy

DOCUMENT NO. \_\_\_\_\_

## NORTHEAST CORNER SECTION 14, T38, R25

### STATEMENT OF EVIDENCE

The original public land survey was ~~run~~<sup>run</sup> in 1851 by Mr. D. Higbee, Deputy Surveyor, and a wood post was used to mark the corner. Bearing ties were made to sugar maple and pine trees.

In 1909, former County Surveyor, John Nelson, made a survey of a road on the North

line of Section 13, T.38, R.25. The survey reestablished the Northwest and North Quarter corners of Section 13 T.38, R.25. Mr. Nelson placed a sandstone with an "X" to mark the corner at the Northwest corner of Section 13, T38, R.25. Recorded in Surveyor's Record Book A.

In 1934, The Minnesota Department of Transportation in Book No. 24, Page 230 of alignment for S.P. 56-110 Ogilvie, Minn. Land Ties station 0+00 to station 413+10.6, shows the assumed Northeast Corner Section 14 T.38, R.25, to be 1.0 foot right of the intersection of centerline of road east and fence line west and centerline of north and south road.

In 1999-2002, The Minnesota Department of Transportation made a survey around Sections 11,12,13 and 14 T.38, R.25, to locate the existing monuments, lines of occupation, and search areas. This corner falls near the intersection of a Township Road (140th Ave.) East and Trunk Highway 47 North and South. A P.K. nail was recovered at the surface at the intersection of roads.

On November 5,2001, The Minnesota Department of Transportation excavated a 4 x 8 x 4.5 foot hole at the intersection of T.H. 47 and fence line West. No evidence of the corner was found. Also excavated a 4 x 8 x 4.5 foot hole at the intersection of roads. No evidence of the corner was found.

In Jan. 2002, The Minnesota Department of Transportation accepted the P.K. location at the intersection of roads as a perpetuation of the original location of the corner. The Minnesota Department of Transportation set a '14 x 24 inch iron pin to mark the corner. New bearing reference ties were made to two oaks and a power pole. The Minnesota Department of Transportation accepts this position as the correct location for the corner.

For details and survey analysis, contact the Minnesota Department of Transportation District Surveys Office in Baxter, Minnesota.

In April 2006, E.G. Rud and Sons found this monument and established Kanabec County Coordinates using G.P.S. equipment.