

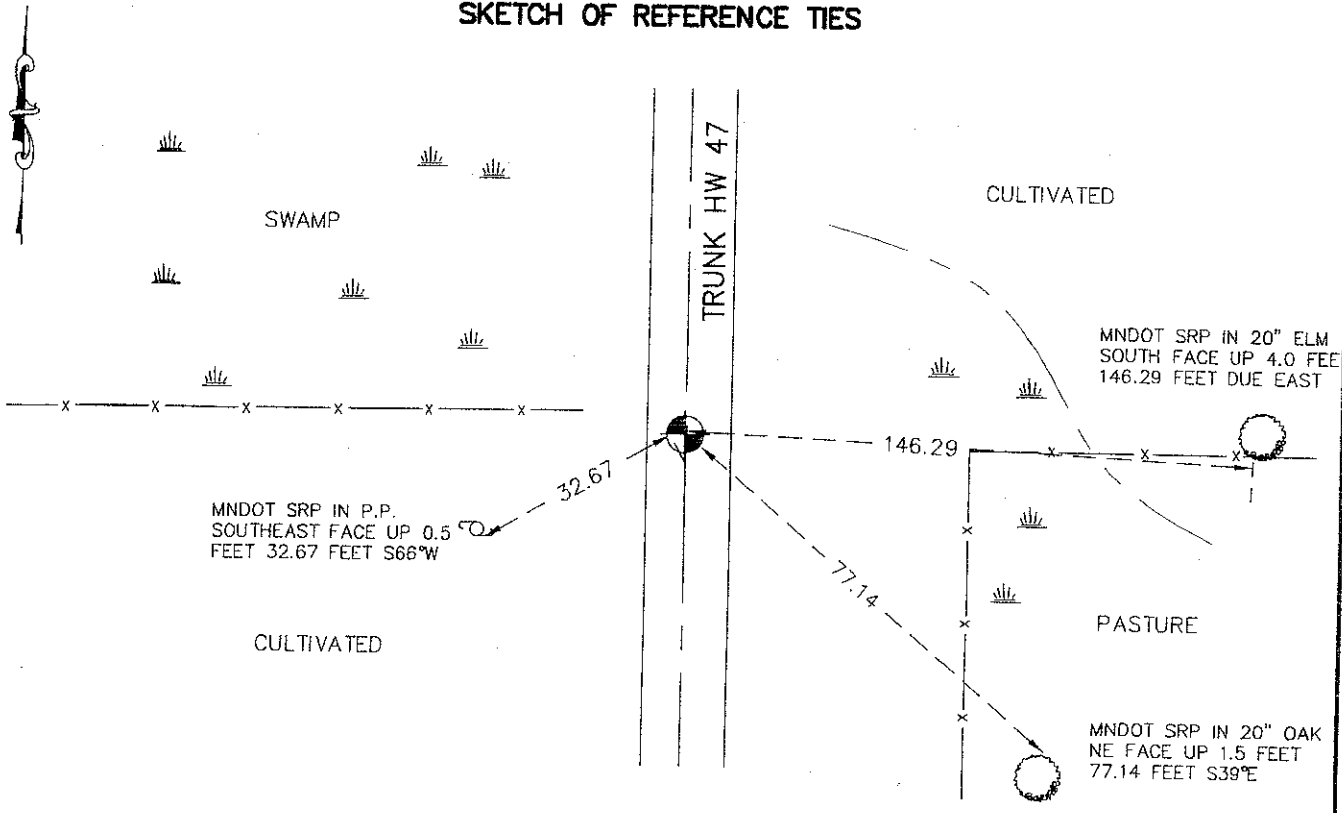
CERTIFICATE OF LOCATION OF GOVERNMENT CORNER

EAST QUARTER Corner of Section 14, Township 38N, Range 25W, 4TH P.M.
 STATE OF MINNESOTA, County of KANABEC

At the corner location shown on the sketch:
 ON 2/04/2002 A 24" X 3/4" PIN WAS SET. DOWN 0.2 FEET, 3.0 FEET WEST OF CENTERLINE AND 3.0 FEET NORTH OF FENCE LINE EAST, AND 2.5 FEET SOUTH OF FENCE LINE WEST.

Kanabec County U.S. Survey Feet Coordinates
 NAD 1983, HARN 1996 Adjustment
 Obtained by RTK GPS Observation
 Northing= 116421.87
 Easting= 375224.84
 Note: NAD 1983, HARN 1996 Adjustment coordinates are NOT compatible with NAD 1983 coordinates
 Note: 1 Meter=3937/1200 U.S. Survey Feet

SKETCH OF REFERENCE TIES



Statement of evidence relative to this corner location is on back of page.

I hereby certify that this document and the data contained herein was prepared by me or under my direct supervision.
Ernest J. Rud 3-17-2009
Signature Date

Registration No. Minn No 9808
 Land Surveyor, [] Professional Engineer
 [] County Surveyor, [] County Engineer

OFFICE OF THE COUNTY RECORDER

County of _____
 I hereby certify that this document was filed in the County Recorder's office at _____ M. on the _____ day of _____ A.D., 20____
 County Recorder _____
 BY _____ Deputy

DOCUMENT NO. _____

EAST QUARTER CORNER SECTION 14, TOWNSHIP 38 N, RANGE 25 W,
4TH PRINCIPAL MERIDIAN, KANABEC COUNTY, MN

STATEMENT OF EVIDENCE

THE ORIGINAL PUBLIC LAND SURVEY WAS RUN IN 1851 BY MR. D. HIGBEE, DEPUTY SURVEYOR, AND A WOOD POST WAS USED TO MARK THE CORNER. BEARING TIES WERE MADE TO A PINE AND A WHITE BIRCH TREE.

IN 1909, FORMER COUNTY SURVEYOR, JOHN NELSON, MADE A SURVEY STARTING AT A STAKE AT THE CORNER OF SECTIONS 1, 2, 11, AND 12, T.38, R.25, THEN GOES SOUTH TO THE SOUTHWEST CORNER OF SECTION 13, RECORDED IN SURVEYOR'S RECORD BOOK A. HE DOES NOT SAY WHAT WAS FOUND FOR THE CORNERS.

IN 1934, THE MINNESOTA DEPARTMENT OF TRANSPORTATION SHOWS THE CORNER AT ENGINEER'S STATION 197+83.2, ASSUMED EAST QUARTER OF SECTION 14, TO BE 3.5 FEET RIGHT OF L-LINE, AT THE CENTERLINE OF NORTH AND SOUTH ROAD AND FENCE LINE WEST. IN BOOK NO. 24, PAGE 229, OF ALIGNMENT FOR S.P. 56-110 OGILVIE, MINN. LAND TIES STATION 0+00 TO STATION 413+10.6.

IN 1999-2002, THE MINNESOTA DEPARTMENT OF TRANSPORTATION MADE A SURVEY AROUND SECTIONS 13 AND 14, T.38, R.25, TO LOCATE THE EXISTING MONUMENTS, LINES OF OCCUPATION, AND SEARCH AREAS. THIS CORNER FALLS NEAR THE INTERSECTION OF TRUNK HIGHWAY 47 AND FENCE LINES EAST AND WEST.

ON NOVEMBER 5, 2001, THE MINNESOTA DEPARTMENT OF TRANSPORTATION EXCAVATED A 4X8X5 FOOT HOLE AT THE INTERSECTION OF CENTERLINE OF TRUNK HIGHWAY 47 AND FENCE LINES EAST AND WEST. NO EVIDENCE OF THE CORNER WAS FOUND.

IN JANUARY, 2002, THE MINNESOTA DEPARTMENT OF TRANSPORTATION COMPUTED THE CORNER POSITION MIDWAY, AND ON-LINE BETWEEN SECTION CORNERS. THE MINNESOTA DEPARTMENT OF TRANSPORTATION SET A 3/4 X 24 INCH IRON PIN TO MARK THE CORNER. NEW BEARING TIES WERE MADE TO A POWER POLE, AND OAK, AND AN ELM TREE. THE MINNESOTA DEPARTMENT OF TRANSPORTATION ACCEPTS THIS POSITION AS THE CORRECT LOCATION FOR THE CORNER.

IN 2006, E.G. RUD AND SONS ESTABLISHED KANABEC COUNTY COORDINATES ON THIS CORNER USING G.P.S. EQUIPMENT.