

CERTIFICATE OF LOCATION OF GOVERNMENT CORNER

NORTH QUARTER Corner of Section 24, Township 38, Range 25, 4TH P.M.

STATE OF MINNESOTA, County of KANABEC

At the corner location shown on the sketch:

FOUND THIS MONUMENT
AND ESTABLISHED G.P.S. COORDINATES ON ITS LOCATION.

Kanabec County U.S. Survey Feet Coordinates
NAD 1983, HARN 1996 Adjustment
Obtained by RTK GPS Observation

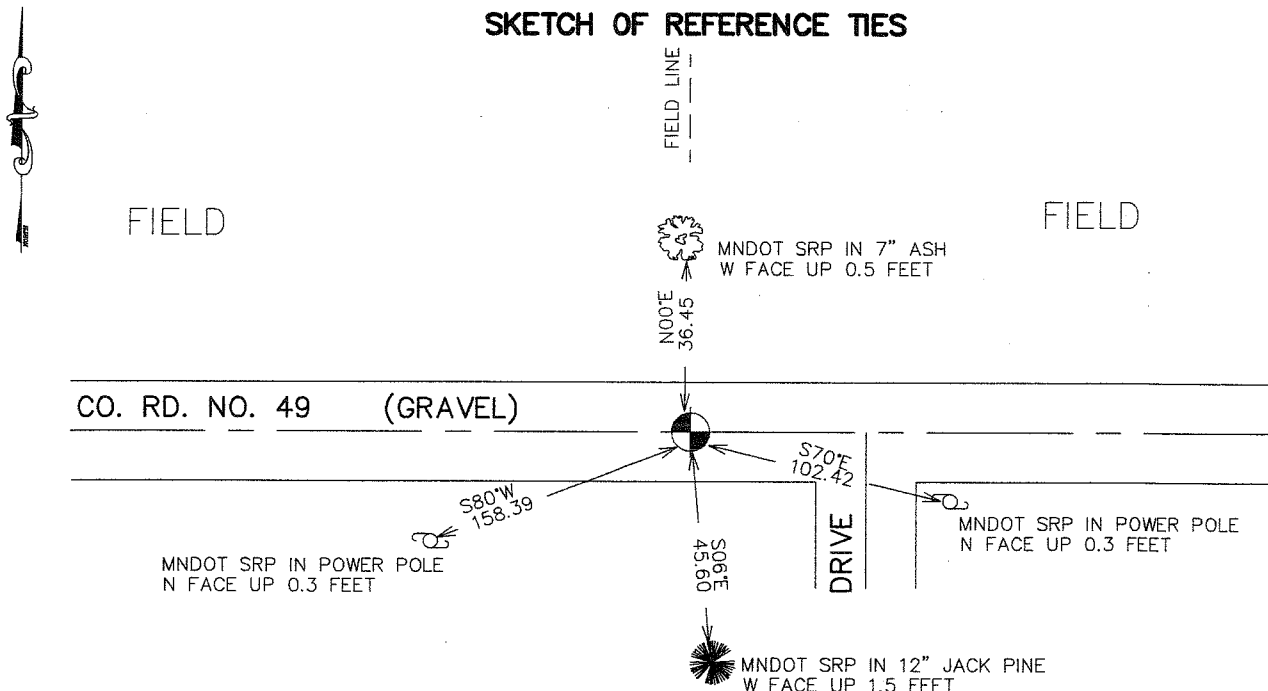
Northing= 116602.52

Easting= 372596.50

Note: NAD 1983, HARN 1996 Adjustment
coordinates are NOT compatible with
NAD 1983 coordinates

Note: 1 Meter=3937/1200 U.S. Survey Feet

SKETCH OF REFERENCE TIES



Statement of evidence relative to this corner location is on back of page.

I hereby certify that this document and the data contained herein was prepared by me or under my direct supervision.

Ernest L. Rud 5-02-2007
Signature Date

Registration No. Minn No 9808

Land Surveyor, Professional Engineer

County Surveyor, County Engineer

OFFICE OF THE COUNTY RECORDER

County of _____

I hereby certify that this document was filed in the County Recorder's office at _____ M. on the _____ day of _____ A.D., 20____

County Recorder _____

BY _____ Deputy

DOCUMENT NO. _____

NORTH QUARTER CORNER SECTION 24, T38, R25

STATEMENT OF EVIDENCE

The original public land survey was run in 1851 by Mr. D. Higbee, Deputy Surveyor, and a wood post was used to mark the corner. Bearing ties were made to a sugar maple and a pine tree.

In 1903, former County Surveyor, John Nelson, made a Township Road Order survey on the South line of Section 13, T. 38, R. 25. There, he located the Southeast, South Quarter, and Southwest Corners of Section 13, recorded in Road Record Book Number 2, Page 23. No mention of what was found for the corners.

In 1999–2002, The Minnesota Department of Transportation made a survey around Sections 13 and 24, T. 38, R. 25, to locate the existing monuments, lines of occupation, and search areas. This corner falls near the intersection of County Road 49 and a field division line North.

On April 27, 1999, The Minnesota Department of Transportation recovered a 3/4 inch square bar that is next to a 14 x 12 inch sandstone down 0.5 feet at the intersection of County Road 49 and the field division line North.

On February 12, 2002, The Minnesota Department of Transportation established new bearing ties to two power poles, an ash, and a pine. A 1/2 inch diameter hole was chiseled into the stone. The 3/4 inch square bar was left in place for magnetic detection. The Minnesota Department of Transportation accepts the position of the stone as the correct location for the corner.

In April 2003 E.G. Rud and Sons established Kanabec County Coordinates on this position using G.P.S. equipment.