

# CERTIFICATE OF LOCATION OF GOVERNMENT CORNER

NORTHEAST Corner of Section 23, Township 38, Range 25, 4TH P.M.  
 STATE OF MINNESOTA, County of KANABEC

At the corner location shown on the sketch:

FOUND THIS MONUMENT  
 AND ESTABLISHED G.P.S. COORDINATES ON ITS LOCATION

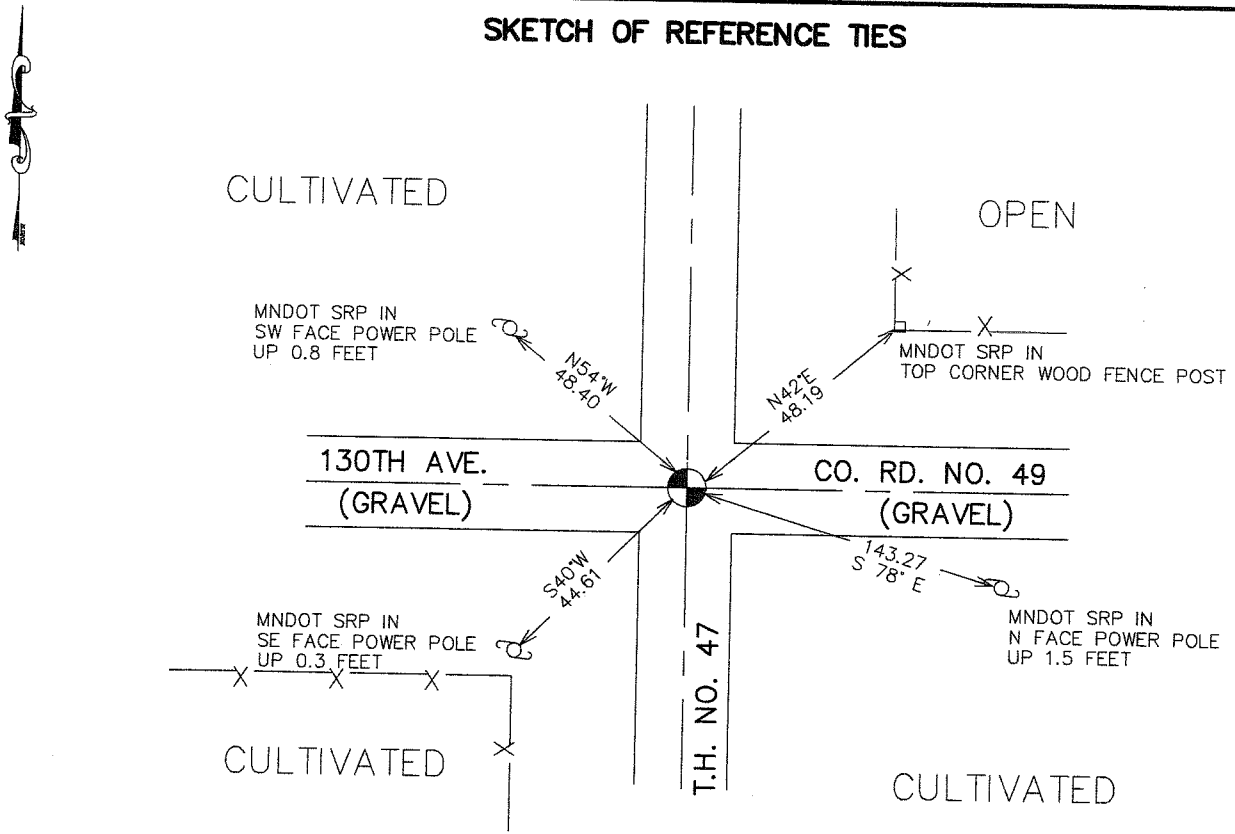
Kanabec County U.S. Survey Feet Coordinates  
 NAD 1983, HARN 1996 Adjustment  
 Obtained by RTK GPS Observation

Northing= 116786.77  
 Easting= 369930.40

Note: NAD 1983, HARN 1996 Adjustment  
 coordinates are NOT compatible with  
 NAD 1983 coordinates

Note: 1 Meter=3937/1200 U.S. Survey Feet

## SKETCH OF REFERENCE TIES



Statement of evidence relative to this corner location is on back of page.

I hereby certify that this document and the data contained herein was prepared by me or under my direct supervision.

*Ernest Alred*  
 Signature

5-02-2007  
 Date

Registration No. Minn No 9808

Land Surveyor,  Professional Engineer  
 County Surveyor,  County Engineer

### OFFICE OF THE COUNTY RECORDER

County of \_\_\_\_\_

I hereby certify that this document was filed in the County Recorder's office at \_\_\_\_\_ M. on the \_\_\_\_\_ day of \_\_\_\_\_ A.D., 20\_\_\_\_

County Recorder \_\_\_\_\_

BY \_\_\_\_\_ Deputy

DOCUMENT NO. \_\_\_\_\_

## NORTHEAST CORNER SECTION 23, T38, R25

### STATEMENT OF EVIDENCE

The original public land survey was run in 1851 by Mr. D. Higbee, Deputy Surveyor, and a wood post was used to mark the corner. Bearing ties were made to a sugar maple and an elm tree.

In 1903, former County Surveyor, John Nelson, made a township road order survey on the South line of Section 13, T. 38, R. 25. There he located the Southeast, South and Southwest Corners of Section 13, recorded in Road Record Book Number 2, Page 23. No mention was made as to what was found for the corners.

In 1909, former County Surveyor, John Nelson, made a survey starting at a stake at the Corner of Sections 1,2,11, and 12, T. 38, R. 25, then goes South to the Southwest Corner of Section 13, to a found boulder stone that was set when the Government witness trees were there. Recorded in Surveyor's Record Book A.

In 1934, The Minnesota Department of Transportation shows the corner at Engineer's station 171 +34.0, "in place stone monument marked with an +", 4.5 feet left of L-line. In Book Number 24, Page 229, of alignment for S.P. 56-110 Ogilvie, Minn. Land Ties station 0+00 to station 413+ 1 0.6.

In 1999-2002, The Minnesota Department of Transportation made a survey around Sections 13, 14,23, and 24, T. 38, R. 25, to locate the existing monuments, lines of occupation, and search areas. This corner falls near the intersection of County Road 49 and Trunk Highway 47.

On June 7,1999, The Minnesota Department of Transportation recovered a ~~3/4~~ x 16 inch iron pipe with a plastic cap down 0.3 feet, (which is not readable). The iron is 3.5 feet west of the centerline of Trunk Highway 47.

On December 18,2001, The Minnesota Department of Transportation excavated a 5 x 8 x 4 foot hole 4.5 feet West of the centerline of Trunk Highway 47. Nothing else was found The found iron pipe was replaced as it was found.

In January, 2002, The Minnesota Department of Transportation accepted the found iron pipe as the location of the Corner. New bearing ties were made to three power poles and a fence post. The Minnesota Department of Transportation accepts this position as the correct location for the corner.

For details and survey analysis, contact the Minnesota Department of Transportation District Surveys Office in Baxter, Minnesota.

In April 2003, E.G. Rud and Sons established Kanabec County Coordinates on this location using g.p.s. equipment.