

# CERTIFICATE OF LOCATION OF GOVERNMENT CORNER

EAST QUARTER Corner of Section 23, Township 38, Range 25, 4TH P.M.

STATE OF MINNESOTA, County of KANABEC

At the corner location shown on the sketch:

FOUND THIS MONUMENT  
AND ESTABLISHED G.P.S. COORDINATES ON ITS LOCATION

Kanabec County U.S. Survey Feet Coordinates  
NAD 1983, HARN 1996 Adjustment  
Obtained by RTK GPS Observation

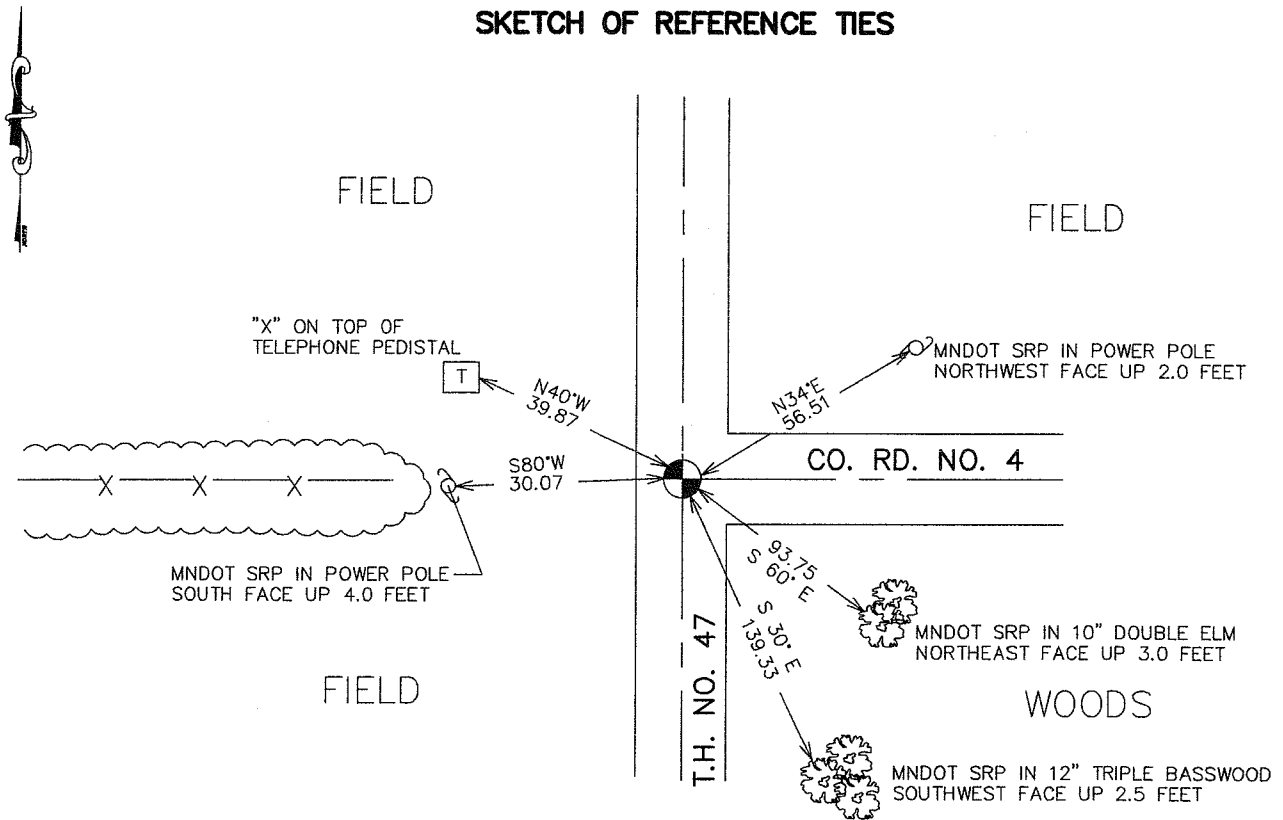
Northing= 114124.43

Easting= 369918.23

Note: NAD 1983, HARN 1996 Adjustment  
coordinates are NOT compatible with  
NAD 1983 coordinates

Note: 1 Meter=3937/1200 U.S. Survey Feet

## SKETCH OF REFERENCE TIES



Statement of evidence relative to this corner location is on back of page.

I hereby certify that this document and the data contained herein was prepared by me or under my direct supervision.

*Ernest Heub* 5-02-2007  
Signature Date

Registration No. Minn No 9818

Land Surveyor,  Professional Engineer

County Surveyor,  County Engineer

### OFFICE OF THE COUNTY RECORDER

County of \_\_\_\_\_

I hereby certify that this document was filed in the County Recorder's office at \_\_\_\_\_ M. on the \_\_\_\_\_ day of \_\_\_\_\_ A.D., 20 \_\_\_\_\_

County Recorder \_\_\_\_\_

BY \_\_\_\_\_ Deputy

DOCUMENT NO. \_\_\_\_\_

## EAST QUARTER CORNER SECTION 23, T38, R25

### STATEMENT OF EVIDENCE

The original public land survey was run in 1851 by Mr. D. Higbee, Deputy Surveyor, and a wood post was used to mark the corner. Bearing ties were made to two elm trees.

In 1921, The County Highway Department field notes show the East Quarter of Section 23, T. 38, R. 25, at station 211+02.2. No mention if a monument was found or set.

In 1934, The Minnesota Department of Transportation shows the Corner at Engineer's station 144+70.6, "assumed East Quarter Comer Section 23, T. 38, R.25," 1 foot right of L-line at intersection of road East and centerline of North and South road. Found in Book Number 24, Page 229, of alignment for S.P. 56-110 Ogilvie, Minn. Land Ties station 0+00 to station 413+10.6.

In 1999-2002, The Minnesota Department of Transportation made a survey around Sections 23 and 24, T. 38, R. 25, to locate the existing monuments, lines of occupation, and search areas. This corner falls near the intersection of Trunk Highway 47 and County Road 4 East.

On September 2, 1999, The Minnesota Department of Transportation excavated a 3.5 foot x 3.5 foot x 5 foot deep area at the intersection of roads. A 20d nail was recovered down 1.9 feet, 1 foot south of the centerline of County Road 4.

On December 18, 2001, The Minnesota Department of Transportation excavated a 4 foot x 8 foot x 6 foot deep area at the intersection of roads. A 18 inch long coned shaped sandstone with a "X" on top was recovered down 5 feet into wood log corduroy, 3.5 feet south and 0.7 feet west of the intersection of roads.

In January, 2002, The Minnesota Department of Transportation determined the corner location by accepting the found sandstone. The Minnesota Department of Transportation removed the found sandstone, for future road construction, and placed a 3/4 x 24 inch iron pin flush with bituminous road to mark the corner. New bearing ties were made as shown on the front of this sheet. The Minnesota Department of Transportation accepts this position as the correct location for the corner.

For details and survey analysis, contact the Minnesota Department of Transportation District Surveys Office in Baxter, Minnesota.

In April 2003, E.G. Rud and Sons established Kanabec County Coordinates on this location using g.p.s. equipment.