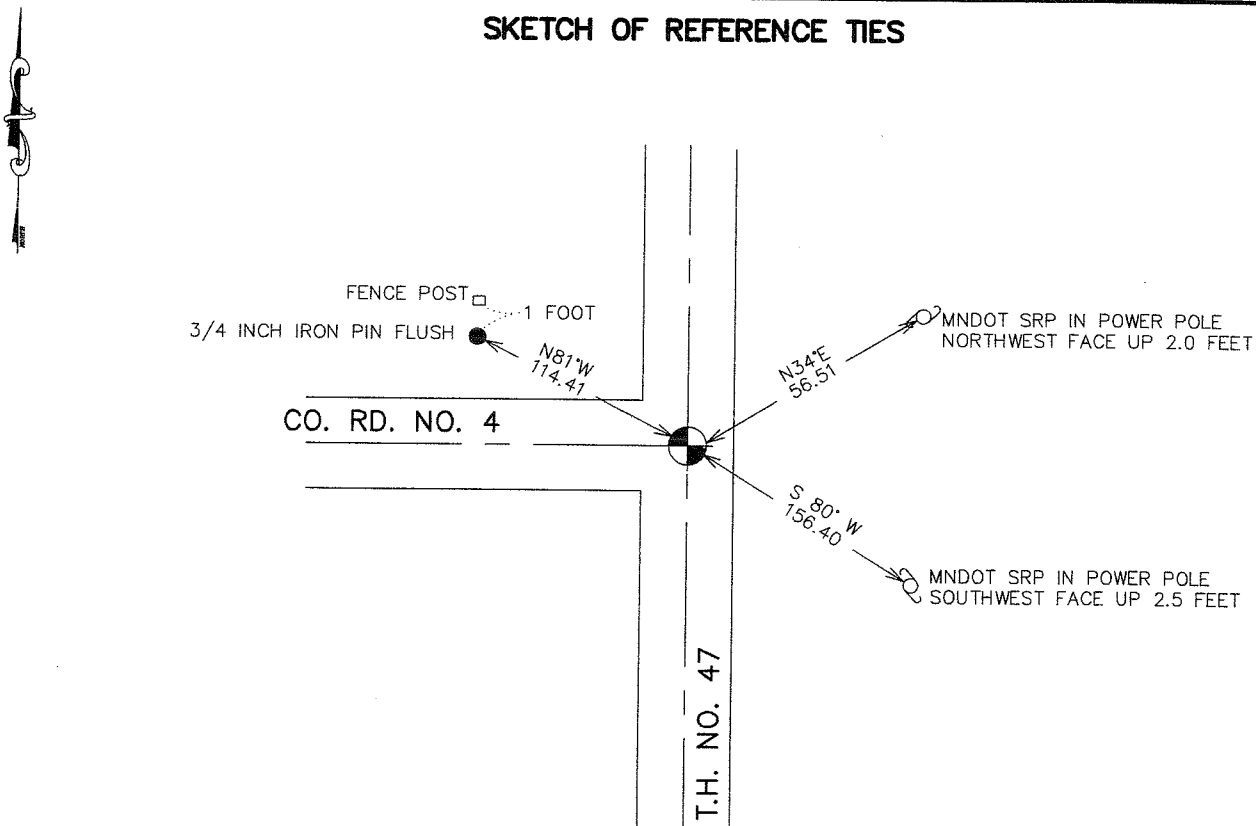


# CERTIFICATE OF LOCATION OF GOVERNMENT CORNER

NORTHEAST Corner of Section 26, Township 38, Range 25, 4TH P.M.  
 STATE OF MINNESOTA, County of KANABEC

At the corner location shown on the sketch:  FOUND THIS MONUMENT AND ESTABLISHED G.P.S. COORDINATES ON ITS LOCATION	Kanabec County U.S. Survey Feet Coordinates NAD 1983, HARN 1996 Adjustment Obtained by RTK GPS Observation  Northing= <u>111480.42</u> Easting= <u>369897.04</u>  Note: NAD 1983, HARN 1996 Adjustment coordinates are NOT compatible with NAD 1983 coordinates Note: 1 Meter=3937/1200 U.S. Survey Feet
--	--

## SKETCH OF REFERENCE TIES



Statement of evidence relative to this corner location is on back of page.

I hereby certify that this document and the data contained herein was prepared by me or under my direct supervision.

*Ernest Bud*  
 Signature

4-12-2007  
 Date

Registration No. Minn No 9808

Land Surveyor,       Professional Engineer  
 County Surveyor,     County Engineer

### OFFICE OF THE COUNTY RECORDER

County of \_\_\_\_\_

I hereby certify that this document was filed in the County Recorder's office at \_\_\_\_\_ M. on the \_\_\_\_\_ day of \_\_\_\_\_ A.D., 20\_\_\_\_

County Recorder \_\_\_\_\_

BY \_\_\_\_\_ Deputy

DOCUMENT NO. \_\_\_\_\_

## NORTHEAST CORNER SECTION 26, T38, R25

### STATEMENT OF EVIDENCE

The original public land survey was run in 1851 by Mr. D. Higbee, Deputy Surveyor, and a wood post was used to mark the corner. Bearing ties were made to two maple trees.

In 1911, John Nelson, former County Surveyor, made a road survey in Section 26, T. 38, R.25. Mr. Nelson started the survey at the Northeast Corner of Section 26, being a stone for the corner. Recorded in Surveyor's Record Book A, page 114.

In 1984, M.B. Rude, Kanabec County Surveyor, recorded Certificate Index No. 692, in which he states: All of the original bearing trees are now gone. There is no resurvey data on file for this corner. In about 1934, the Minnesota Department of Transportation made a survey for State Highway No. 47, and did not find any evidence of the corner post, and assumed the intersection of roads North-South and West as the best available evidence of this corner.

M.B. Rude, Kanabec County Surveyor, accepted the intersection of roads North-South and West as the best available evidence of the original corner location, and set a 7/8 inch by 24 inch capped rebar to mark this corner.

In July, 1984, M.B. Rude Surveyor, made a survey for Kanabec Co. Highway Department. On a Certificate recorded in Surveyor's Record Book A, Page 267, Mr. Rude shows a Kanabec County cast aluminum cap at the Northeast Corner of Section 26, T. 38, R. 25.

On April 20, 1999, The Minnesota Department of Transportation recovered a capped rebar, as shown on Mr. Rude's Document Index 692.

On June 8, 1999, The Minnesota Department of Transportation excavated a 3 foot x 3 foot x 4.5 foot deep area at the capped rebar location and recovered a 60d nail down 1.9 feet. The nail was 0.75 feet south of the capped rebar. Nothing else was found.

In January, 2002, The Minnesota Department of Transportation accepted the found capped rebar as the location of the corner. New bearing ties were made to two power poles and an iron pin. The Minnesota Department of Transportation accepts this position as the correct location for the corner.

For details and survey analysis, contact the Minnesota Department of Transportation District Surveys Office in Baxter, Minnesota.

In April 2003, E.G. Rud and Sons established Kanabec County Coordinates on this location using g.p.s. equipment.