

CERTIFICATE OF LOCATION OF GOVERNMENT CORNER

EAST QUARTER Corner of Section 26, Township 38, Range 25, 4TH P.M.
STATE OF MINNESOTA, County of KANABEC

At the corner location shown on the sketch:

FOUND THIS MONUMENT
AND ESTABLISHED G.P.S. COORDINATES ON ITS LOCATION

Kanabec County U.S. Survey Feet Coordinates
NAD 1983, HARN 1996 Adjustment
Obtained by RTK GPS Observation

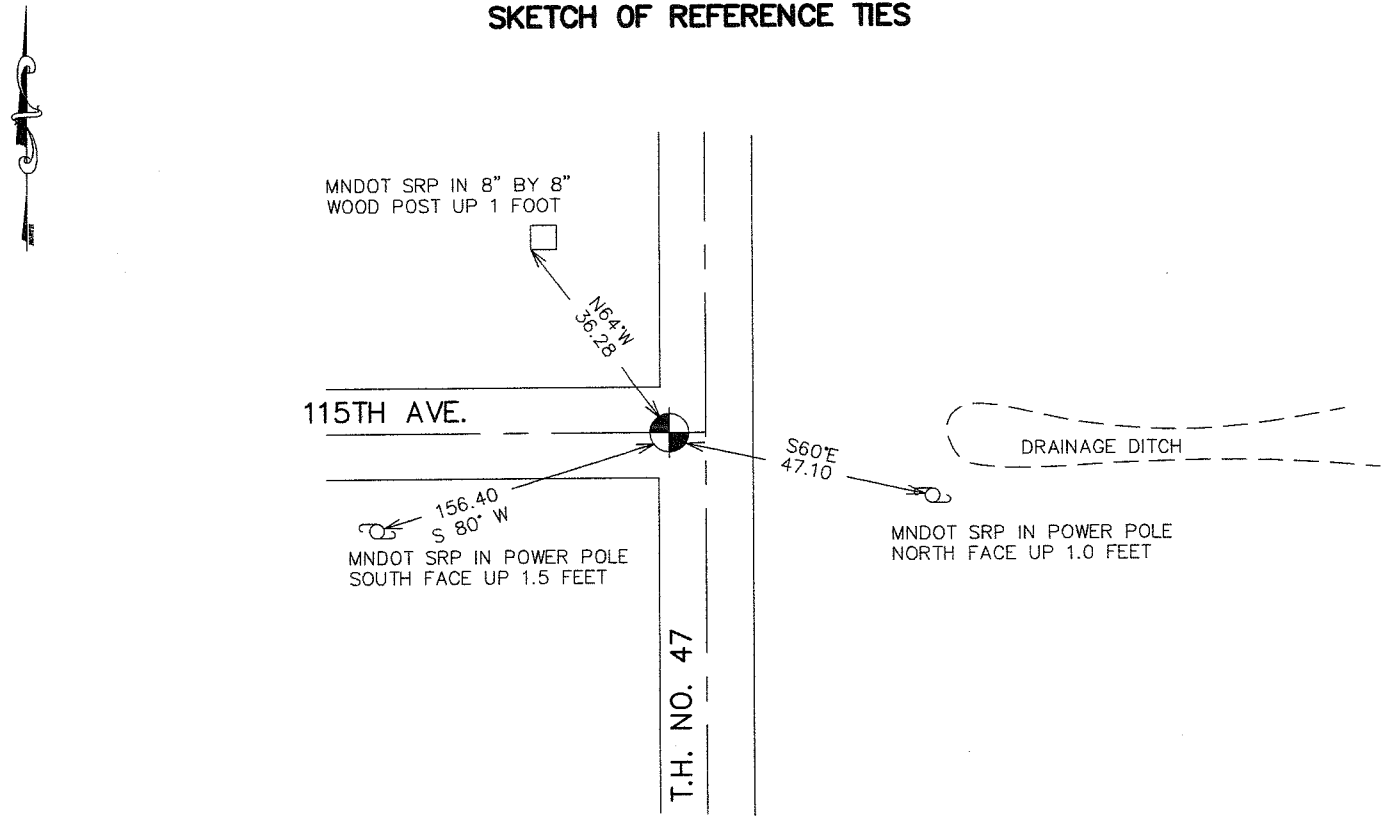
Northing= 108841.50

Easting= 369874.51

Note: NAD 1983, HARN 1996 Adjustment
coordinates are NOT compatible with
NAD 1983 coordinates

Note: 1 Meter=3937/1200 U.S. Survey Feet

SKETCH OF REFERENCE TIES



Statement of evidence relative to this corner location is on back of page.

I hereby certify that this document and the data contained herein was prepared by me or under my direct supervision.

Ernest Blud 4-12-2007
Signature Date

Registration No. Minn No 9808

Land Surveyor, Professional Engineer

County Surveyor, County Engineer

OFFICE OF THE COUNTY RECORDER

County of _____

I hereby certify that this document was filed in the County Recorder's office at _____ M. on the

_____ day of _____ A.D., 20__

County Recorder _____

BY _____ Deputy

DOCUMENT NO. _____

EAST QUARTER CORNER SECTION 26, T38, R25

STATEMENT OF EVIDENCE

The original public land survey was run in 1851 by Mr. D. Higbee, Deputy Surveyor, and a wood post was used to mark the corner. Bearing ties were made to two sugar maple trees.

In 1911, John Nelson, County Surveyor, made a survey that began at the East Quarter Corner of Section 26, T. 38 N., R. 25 W., and ran West. Mr. Nelson set this corner but does not say what was set for the corner. Recorded in Surveyor's Book A, Page 114.

In 1934, The Minnesota Department of Transportation shows the Corner, at Engineer's Station 92+78.9, L-Line, "assumed East Corner Section 26, T. 38, R. 25" to fall at the intersection of fence line East and centerline of North and South road. Found in Book Number 24, Page 228, of alignment for S.P. 56-110, Ogilvie, Minn. Land Ties station 0+00 to station 413+10.6.

In 1999-2002, The Minnesota Department of Transportation made a survey around Sections 25 and 26, T. 38 N., R. 25 W., to locate the existing monuments, lines of occupation, and search areas. This corner falls near the intersection of Trunk Highway 47 and a Township Road. (115th Ave. West)

On June 3, 1999, The Minnesota Department of Transportation excavated a 3 x 3 x 3 foot hole at the intersection of roads. No evidence of the corner was found.

On December 19, 2001, The Minnesota Department of Transportation excavated a 4 x 8 x 5 foot hole at the intersection of roads, 2 feet west of centerline. A 14 inch oblong granite stone, down 1.4 feet, was recovered.

In January, 2002, The Minnesota Department of Transportation accepted the found granite stone as a perpetuation of the original location of the Corner. The Minnesota Department of Transportation removed the found stone, for future road construction, and set a 14 x 24 inch iron pin at the same position. New bearing ties were made to two power poles and a wood post. The Minnesota Department of Transportation accepts this position as the correct location for the corner.

For details and survey analysis, contact the Minnesota Department of Transportation District Surveys Office in Baxter, Minnesota.

In April 2003 E.G.Rud and Sons established Kanabec County Coordinates on this location using G.P.S. equipment.