

# CERTIFICATE OF LOCATION OF GOVERNMENT CORNER

NORTH QUARTER Corner of Section 36, Township 38, Range 25, 4TH P.M.

STATE OF MINNESOTA, County of KANABEC

At the corner location shown on the sketch:

FOUND THIS MONUMENT  
AND ESTABLISHED G.P.S. COORDINATES ON ITS LOCATION.

Kanabec County U.S. Survey Feet Coordinates  
NAD 1983, HARN 1996 Adjustment  
Obtained by RTK GPS Observation

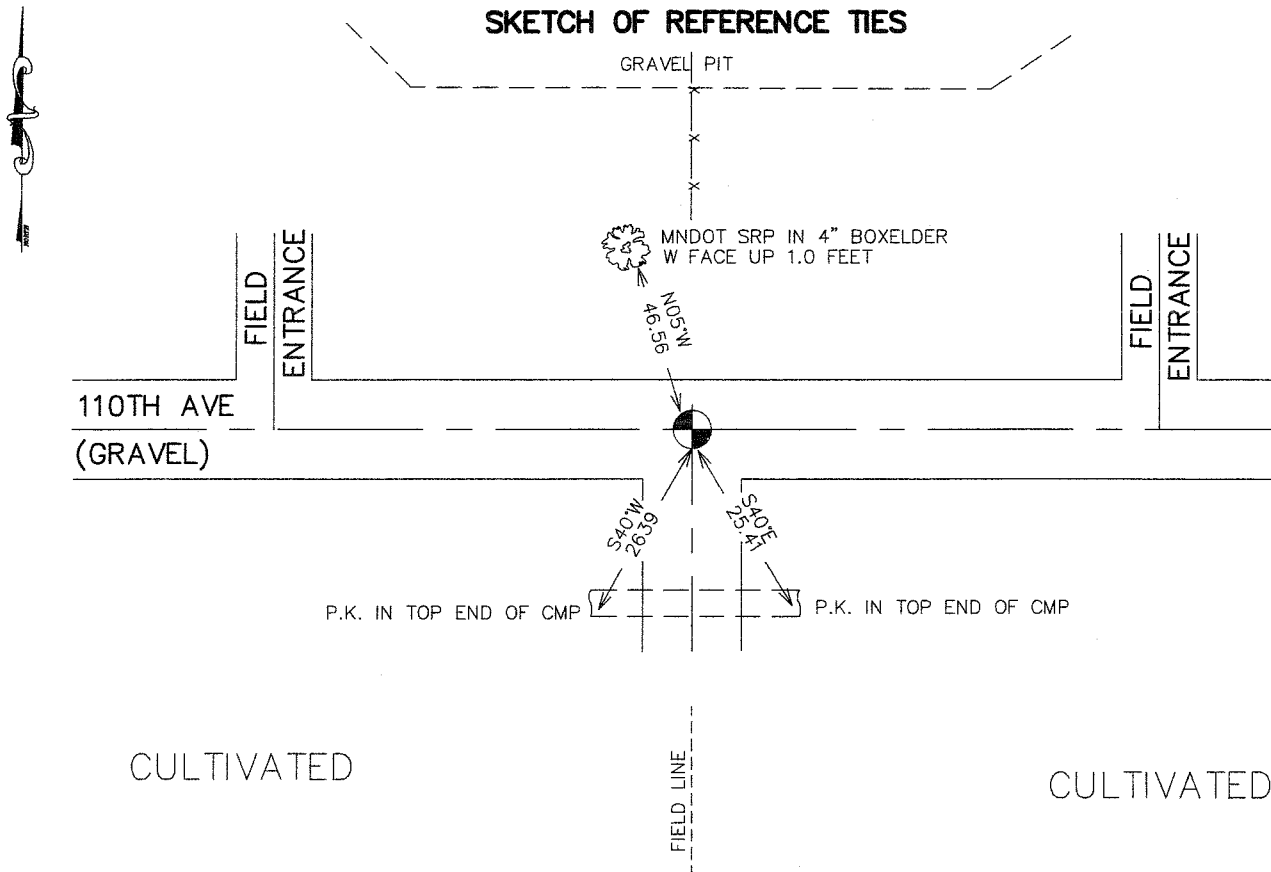
Northing= 106049.94

Easting= 372507.16

Note: NAD 1983, HARN 1996 Adjustment  
coordinates are NOT compatible with  
NAD 1983 coordinates

Note: 1 Meter=3937/1200 U.S. Survey Feet

### SKETCH OF REFERENCE TIES



Statement of evidence relative to this corner location is on back of page.

I hereby certify that this document and the data contained herein was prepared by me or under my direct supervision.

Ernest J. Reed  
Signature

5-1-2007  
Date

### OFFICE OF THE COUNTY RECORDER

County of \_\_\_\_\_

I hereby certify that this document was filed in the County Recorder's office at \_\_\_\_\_ M. on the \_\_\_\_\_ day of \_\_\_\_\_ A.D., 20 \_\_\_\_\_

County Recorder \_\_\_\_\_

BY \_\_\_\_\_ Deputy

**DOCUMENT NO.** \_\_\_\_\_

Registration No. Minn No 9808

Land Surveyor,       Professional Engineer

County Surveyor,       County Engineer

## NORTH QUARTER CORNER SECTION 36, T38, R25

### STATEMENT OF EVIDENCE

The original public land survey was run in 1851 by Mr. D. Higbee, Deputy Surveyor, and a wood post was used to mark the corner. Bearing ties were made to an ironwood and a sugar maple tree.

In 1901, John Nelson, Surveyor, made a survey in Section 36, T. 38, R. 25, for Nels Solstrom, recorded in Surveyor's Record Book 2, Page 4. Mr. Nelson noted the North Quarter Corner with bearing ties to an elm tree and a pine stump. Mr. Nelson does not state what was found or set for the corner.

In 1999–2002, The Minnesota Department of Transportation made a survey around Sections 25 and 36, T.38, R.25, to locate the existing monuments, lines of occupation, and search areas. This corner falls near the intersection of a Township road (1 10th Ave.) East and West, a fence line North, and field division line South. On June 1, 1999, The Minnesota Department of Transportation excavated a 4 x 15 x 4 foot hole at the intersection of road and fence line north. No evidence of the corner was found.

In January, 2002, The Minnesota Department of Transportation accepted the intersection of Township Road centerline and fence line north as a perpetuation of the original location of the corner. The Minnesota Department of Transportation set a cast iron cap with a brass center on a 30 inch long telespar tube to mark the corner. New bearing ties were made to two culvert ends and a box elder tree. The Minnesota Department of Transportation accepts this position as the correct location for the corner.

For details and survey analysis, contact the Minnesota Department of Transportation District Surveys Office in Baxter, Minnesota.

In April 2003 E.G. Rud and Sons established Kanabec County Coordinates on this position using G.P.S. equipment.