

CERTIFICATE OF LOCATION OF GOVERNMENT CORNER

NORTHEAST Corner of Section 35, Township 38, Range 25, 4TH P.M.

STATE OF MINNESOTA, County of KANABEC

At the corner location shown on the sketch:

FOUND THIS MONUMENT
AND ESTABLISHED G.P.S. COORDINATES ON ITS LOCATION

Kanabec County U.S. Survey Feet Coordinates
NAD 1983, HARN 1996 Adjustment
Obtained by RTK GPS Observation

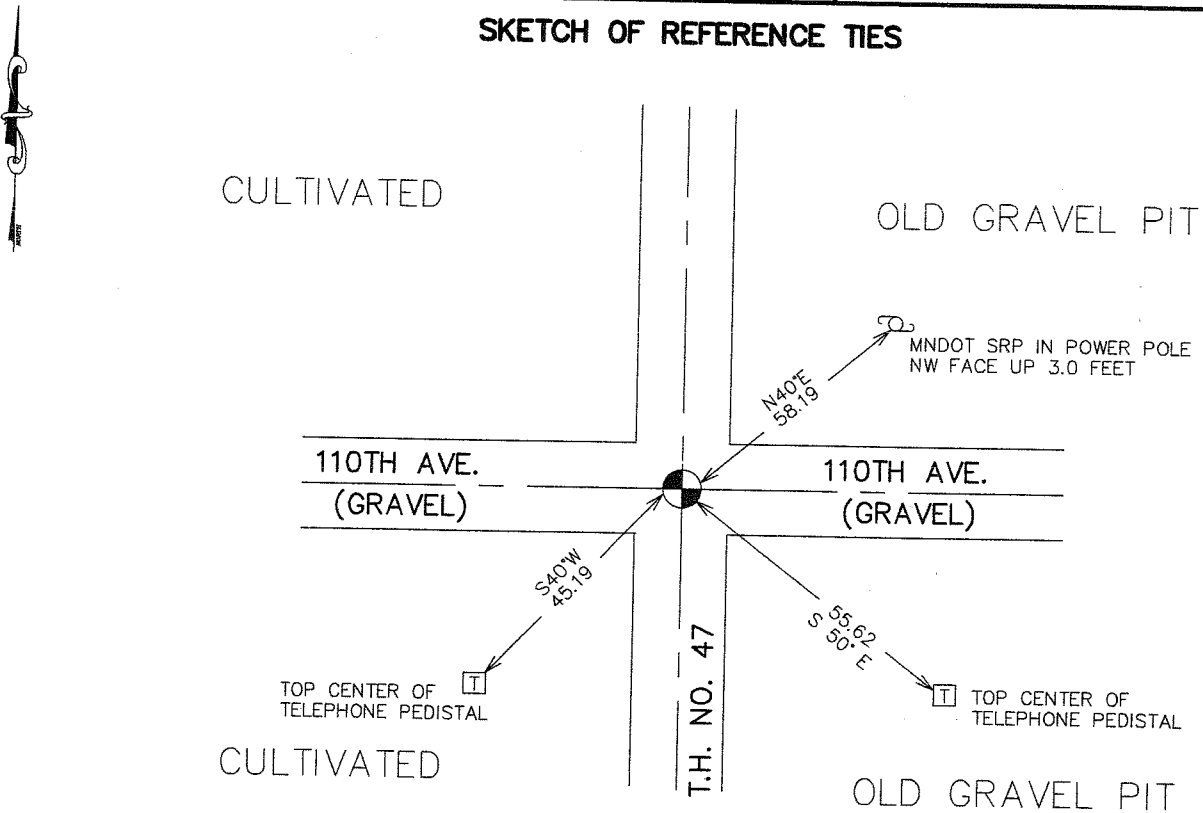
Northing= 106203.04

Easting= 369848.16

Note: NAD 1983, HARN 1996 Adjustment
coordinates are NOT compatible with
NAD 1983 coordinates

Note: 1 Meter=3937/1200 U.S. Survey Feet

SKETCH OF REFERENCE TIES



Statement of evidence relative to this corner location is on back of page.

I hereby certify that this document and the data contained herein was prepared by me or under my direct supervision.

[Signature] 5-02-2007
Signature Date

Registration No. Minn No 9802

Land Surveyor, Professional Engineer
 County Surveyor, County Engineer

OFFICE OF THE COUNTY RECORDER

County of _____

I hereby certify that this document was filed in the County Recorder's office at _____ M. on the _____ day of _____ A.D., 20____

County Recorder _____

BY _____ Deputy

DOCUMENT NO. _____

NORTHEAST CORNER SECTION 35, T38, R25

STATEMENT OF EVIDENCE

The original public land survey was run in 1851 by Mr. D. Higbee, Deputy Surveyor, and a wood post was used to mark the corner. Bearing ties were made to two bur oak trees.

In 1901, John Nelson, Surveyor, made a survey in Section 36, T. 38 N., R. 25 W., for Nels Solstrom, recorded in Surveyor's Record Book 2, Page 4. Mr. Nelson goes to the Northwest Corner of Section 36 to a found corner. New bearing reference ties were made to three pine stumps.

In 1911, John Nelson, County Surveyor, made a road survey between Sections 26 and 35. Mr. Nelson started at the Section Corner common to Sections 25,26,35 and 36, "this being a good corner". Mr. Nelson does not say what was found at the corner. Recorded in Surveyor's Book A, Page 110.

In 1911, John Nelson, County Surveyor, made another road survey between sections 26 and 25. Mr. Nelson started at the Northeast Corner of Section 26, and went South to intersect corner to Sections 25, 26, 35 and 36. Mr. Nelson does not say what was found at the corner. Recorded in Surveyors Book A, Page 114.

In 1934, The Minnesota Department of Transportation showed the assumed Northeast Corner of Section 35 to be 3.1 feet left of L-line, at the intersection of roads, at Engineer's Station 66+46.9, in Book No. 24, Page 228, of alignment for S.P. 56-110, Ogilvie, Minn. Land Ties station 0+00 to station 413+ 10.6.

In 1999-2002, The Minnesota Department of Transportation made a survey around Sections 25, 26,35 and 36, T.38, R.25, to locate the existing monuments, lines of occupation, and search areas. This corner falls near the intersection of Trunk Highway 47 North and South, and Township road (110th Ave.) East and West. On June 3, 1999, The Minnesota Department of Transportation excavated a 3 x 4 x 2.5 foot hole at the intersection of roads. A 9 x 7 x 4 inch sandstone was recovered, down 1.5 feet.

In January, 2002, The Minnesota Department of Transportation lowered the found sandstone and set a 3/4 x 24 inch iron pin at the same position. New bearing ties were made to a power pole and two telephone pedestals. The Minnesota Department of Transportation accepts this position as the correct location for the corner.

For details and survey analysis, contact the Minnesota Department of Transportation District Surveys Office in Baxter, Minnesota.

In April 2003, E.G. Rud and Sons established Kanabec County Coordinates on this location using g.p.s. equipment.