

CERTIFICATE OF LOCATION OF GOVERNMENT CORNER

EAST QUARTER Corner of Section 35, Township 38, Range 25, 4TH P.M.

STATE OF MINNESOTA, County of KANABEC

At the corner location shown on the sketch:
 FOUND THIS MONUMENT
 ESTABLISHED G.P.S COORDINATES ON THE POSITION

Kanabec County U.S. Survey Feet Coordinates
 NAD 1983, HARN 1996 Adjustment
 Obtained by RTK GPS Observation

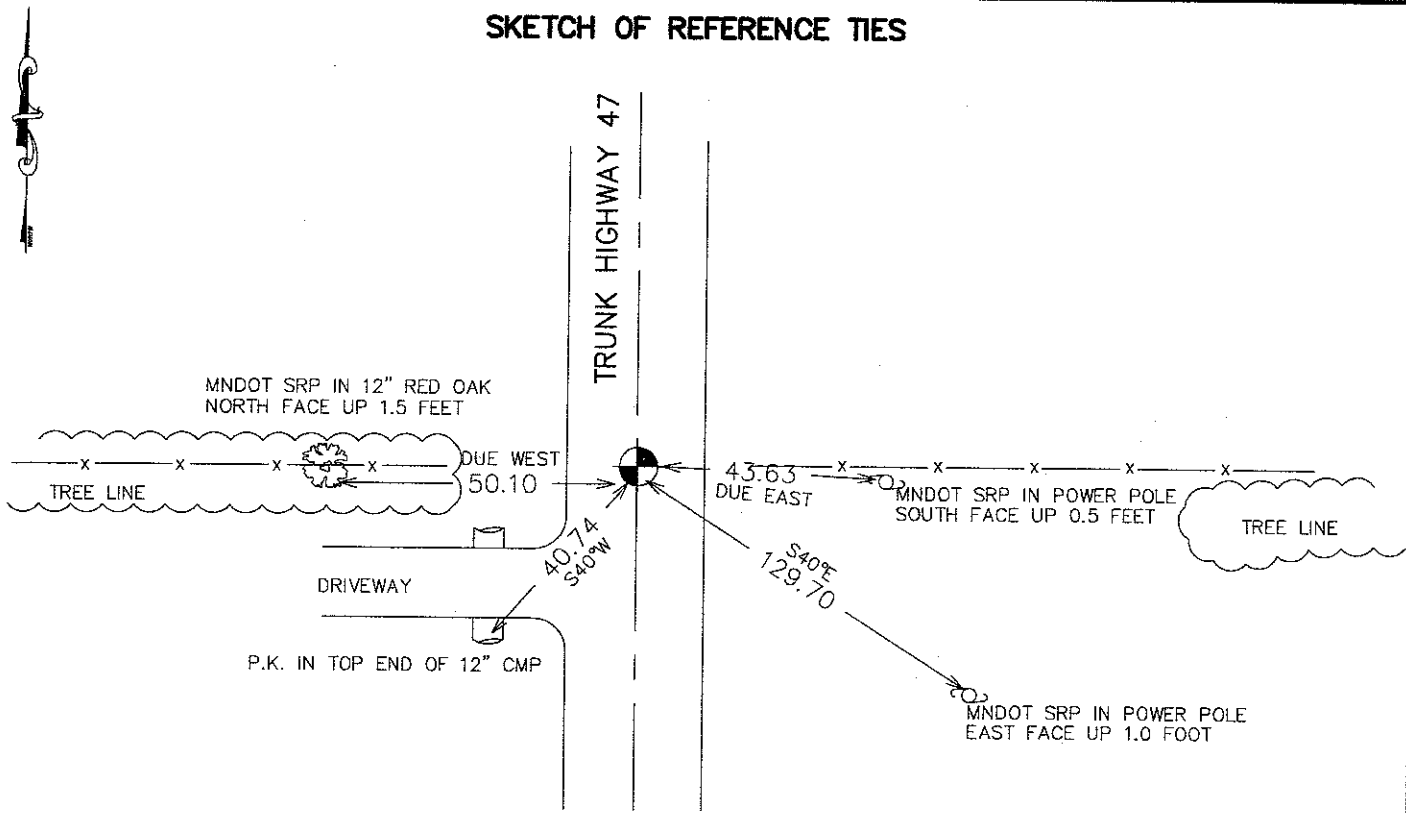
Northing= 103586.32

Easting= 369837.60

Note: NAD 1983, HARN 1996 Adjustment
 coordinates are NOT compatible with
 NAD 1983 coordinates

Note: 1 Meter=3937/1200 U.S. Survey Feet

SKETCH OF REFERENCE TIES



Statement of evidence relative to this corner location is on back of page.

I hereby certify that this document and the data contained herein was prepared by me or under my direct supervision.

Ernest J. Reed
 Signature

12-10-2007
 Date

Registration No. 9808

Land Surveyor, [] Professional Engineer

[] County Surveyor, [] County Engineer

OFFICE OF THE COUNTY RECORDER

County of _____

I hereby certify that this document was filed in the County Recorder's office at _____ M. on the _____ day of _____ A.D., 20 _____

County Recorder _____

BY _____ Deputy

BY _____ Deputy

DOCUMENT NO. _____

EAST QUARTER CORNER SECTION 35, TOWNSHIP 38, RANGE 25

STATEMENT OF EVIDENCE

THE ORIGINAL PUBLIC LAND SURVEY WAS RUN IN 1851 BY MR. D. HIGBEE, DEPUTY SURVEYOR, AND A WOOD POST WAS USED TO MARK THE CORNER. BEARING TIES WERE MADE TO A BUTTERNUT AND A LINDEN.

IN 1901, JOHN NELSON, SURVEYOR, MADE A SURVEY IN SECTION 36 T.38N. R.25W., FOR NELS SOLSTROM. RECORDED IN SURVEY'S RECORD BOOK 2, PAGE 4. MR. NELSON ESTABLISHED THE WEST QUARTER CORNER OF SECTION 36. NEW BEARING REFERENCE TIES WERE MADE TO AN ELM TREE AND A PINE STUMP. MR. NELSON DID NOT SAY WHAT WAS SET FOR THE CORNER.

IN 1934, THE MINNESOTA DEPARTMENT OF TRANSPORTATION CALLED FOR THE CORNER AT ENGINEER'S STATION 40+22.7, ASSUMED EAST CORNER SECTION 35, TO BE AT THE INTERSECTION OF FENCE LINES EAST AND WEST AND CENTERLINE OF NORTH AND SOUTH ROAD. INFORMATION FOUND IN BOOK NO. 24, PAGE 227, OF ALIGNMENT FOR S.P. 56-110, OGILVIE, MINNESOTA LAND TIES STATION 0+00 TO STATION 413+10.6.

IN 1999-2002, THE MINNESOTA DEPARTMENT OF TRANSPORTATION MADE A SURVEY AROUND SECTIONS 35 AND 36, T.38, R.25, TO LOCATE THE EXISTING MONUMENTS, LINES OF OCCUPATION, AND SEARCH AREAS. THIS CORNER FALLS NEAR THE INTERSECTION OF TRUNK HIGHWAY 47 NORTH AND SOUTH, AND FENCE LINES EAST AND WEST.

ON OCTOBER 31, 2001, THE MINNESOTA DEPARTMENT OF TRANSPORTATION EXCAVATED A 4 X 8 X 3 FOOT HOLE AT THE INTERSECTION OF ROAD AND FENCE LINES. NO EVIDENCE OF THE CORNER WAS FOUND.

IN JANUARY, 2002, THE MINNESOTA DEPARTMENT OF TRANSPORTATION ACCEPTED THE OCCUPATION POSITION AT THE INTERSECTION OF ROAD AND FENCE LINES AS A PERPETUATION OF THE ORIGINAL LOCATION OF THE CORNER. THE MINNESOTA DEPARTMENT OF TRANSPORTATION SET A CAPPED 3/4" X 24" IRON PIN TO MARK THE CORNER. NEW BEARING REFERENCE TIES WERE MADE TO TWO POWER POLES, A RED OAK AND A CULVERT END. THE MINNESOTA DEPARTMENT OF TRANSPORTATION ACCEPTS THIS POSITION AS THE CORRECT LOCATION FOR THE CORNER.

IN 2006 E.G. RUD AND SONS ESTABLISHED KANABEC COUNTY COORDINATES ON THIS CORNER.