

# CERTIFICATE OF LOCATION OF GOVERNMENT CORNER

SOUTH QUARTER Corner of Section 36, Township 38, Range 25, 4TH P.M.

STATE OF MINNESOTA, County of KANABEC

At the corner location shown on the sketch:

FOUND THIS MONUMENT  
AND ESTABLISHED KANABEC COUNTY COORDINATES ON ITS LOCATION.

Kanabec County U.S. Survey Feet Coordinates  
NAD 1983, HARN 1996 Adjustment  
Obtained by RTK GPS Observation

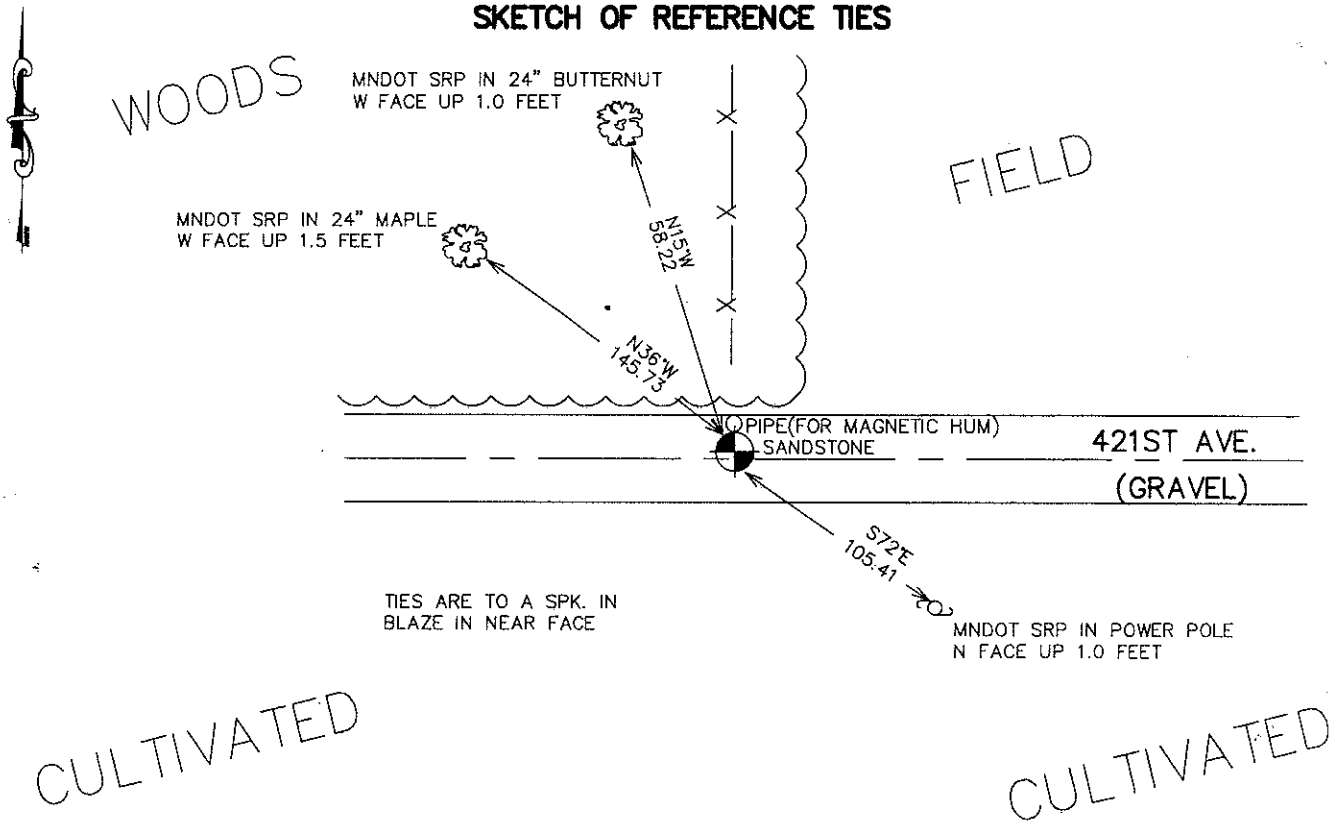
Northing= 100802.48

Easting= 372471.30

Note: 1983, HARN 1996 Adjustment  
coordinates are NOT compatible with  
NAD 1983 coordinates

Note: 1 Meter=3937/1200 U.S. Survey Feet

### SKETCH OF REFERENCE TIES



TIES ARE TO A SPK. IN  
BLAZE IN NEAR FACE

Statement of evidence relative to this corner location is on back of page.

I hereby certify that this document and the data contained herein was prepared by me or under my direct supervision.

Ernest Rud  
Signature

10-05-2007  
Date

Registration No. 9808

Land Surveyor,       Professional Engineer

County Surveyor,       County Engineer

### OFFICE OF THE COUNTY RECORDER

County of \_\_\_\_\_

I hereby certify that this document was filed in the County Recorder's office at \_\_\_\_\_ M. on the

\_\_\_\_\_ day of \_\_\_\_\_ A.D., 20\_\_\_\_

County Recorder \_\_\_\_\_

BY \_\_\_\_\_ Deputy

DOCUMENT NO. \_\_\_\_\_

## SOUTH QUARTER CORNER SECTION 36, T38, R25

### STATEMENT OF EVIDENCE

The original public land survey was run in 1851 by Mr. D. Higbee, Deputy Surveyor, and a wood post was used to mark the corner. Bearing ties were made to two elm trees.

In 1901, John Nelson, Surveyor, made a survey in Section 36, T. 38 N., R. 25 W., for Nels Solstrom, recorded in Surveyor's Record Book 2, Page 4. Mr. Nelson noted that he subdivided the Section and established corners. The South 1/4 post was referenced by two red elms. Does not mention what was set for the corner.

On Oct 20, 1975, Mr. N.C. Hoium, County Surveyor, on a document at the County Recorder's Office, a Certificate of Location of Government Corner for the North Quarter Corner of Section 1, T. 37 N., R 25 W., it is stated that Mr. Hoium found said Section Corner, which was evidenced by stone monument Mr. Hoium left the stone as found and placed an iron pipe on the north side of the stone. New. reference ties were taken.

On April 10, 1984, Don E. Hansen, County Surveyor, on document index number 10-A, recovered the stone monument and the iron pipe as referenced on Mr. Hoium's previous certificate. New reference ties were taken.

On February 22, 1999, The Minnesota Department of Transportation recovered the stone monument (with chiseled "X") and the iron pipe as referenced on Mr. Hansen's document. (index number 10-A.)

In February, 2002, The Minnesota Department of Transportation established new bearing ties to the stone monument, as shown on the front of this Certificate. The Minnesota Department of Transportation accepts this position as the correct location for the corner.

In 2006 E.G. Rud and Sons established Kanabec County Coordinates on this corner.