

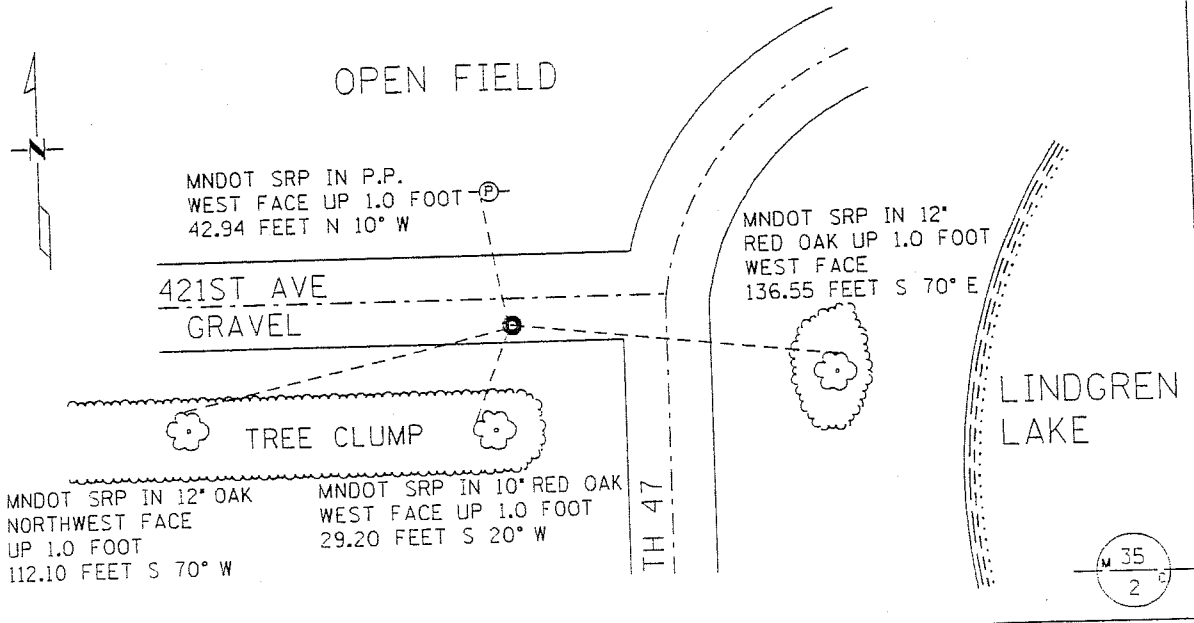
KANABEC COUNTY RECORDER  
Filed 8-28-02 at 12:00 M  
By Rhonda A. Blum County Recorder  
D. Debra Deputy

# CERTIFICATE OF LOCATION OF GOVERNMENT CORNER

MEANDER CORNER ON SOUTH LINE of Section 35, Township 38 N, Range 25 W  
4 TH Principal Meridian, State of Minnesota, County of KANABEC

At the corner location shown on the sketch:

- On 11/2002 found a NOTHING
- left monument as found     lowered monument     removed monument (explain)
- On 2/11/02 placed a CAST IRON CAP WITH BRASS CENTER ON A 30 INCH TELSPAR TUBE  
5.0 FEET +/- SOUTH OF CENTERLINE, DOWN 0.5 FEET



Statement of evidence for this corner location is on back of this page.

I hereby certify that this document was researched and prepared by me or under my direct supervision.

Signature [Signature] **MNDOT** Date 8-28-2002 License No. 40343

Title:  Land Surveyor     Professional Engineer     County Surveyor     County Engineer

**Statement of Evidence:** Meander Corner 16.66 Chains East of the South Quarter Corner of Section 35, Township 38 North, Range 25 West, 4<sup>th</sup> Principal Meridian, Kanabek County, Minnesota.

The original public land survey was run in 1851 by Mr. D. Higbee, Deputy Surveyor, and an 8-inch diameter Maple was used to mark the corner.

In 1901, John Nelson, Surveyor, made a survey in Section 36, T. 38 N., R. 25 W., for Nels Solstrom, recorded in Surveyor's Record Book 2, Page 4. Mr. Nelson surveyed the South line of Section 36, and went to the South  $\frac{1}{4}$  post of Section 35. Mr. Nelson does not say what was done for the Meander Corner on the South line of Section 35.

In 1999-2002, The Minnesota Department of Transportation made a survey around Section 35, T. 38 N., R. 25 W., and Section 2, T. 37 N., R. 25 W., to locate the existing monuments, lines of occupation, and search areas.

In December, 2001, The Minnesota Department of Transportation excavated a 3 x 6 x 2 foot hole at a computed position using the original Government Survey notes. No evidence of the corner was found.

In January, 2002, The Minnesota Department of Transportation set the monument on-line between the North Quarter Corner of Section 2 and the North Quarter Corner of Section 1, T. 37, R. 25 at the proportional distance of 1100.9348 feet from the North Quarter Corner of Section 2, T. 37, R. 25. The Minnesota Department of Transportation set a cast iron cap, with a brass center, on a 30-inch long telespar tube to mark the corner. New bearing ties were established as shown on the front of this Certificate. The Minnesota Department of Transportation accepts this position as the correct location for the corner.

For details and survey analysis, contact the Minnesota Department of Transportation District Surveys Office in Baxter, Minnesota.