

KANABEC COUNTY RECORDER
Filed 8-28-02 at 12:00PM
Rhonda A. Olson County Recorder
By R. Delmbrecht Deputy

CERTIFICATE OF LOCATION OF GOVERNMENT CORNER

MEANDER CORNER ON SOUTH LINE of Section 36, Township 38 N, Range 25 W

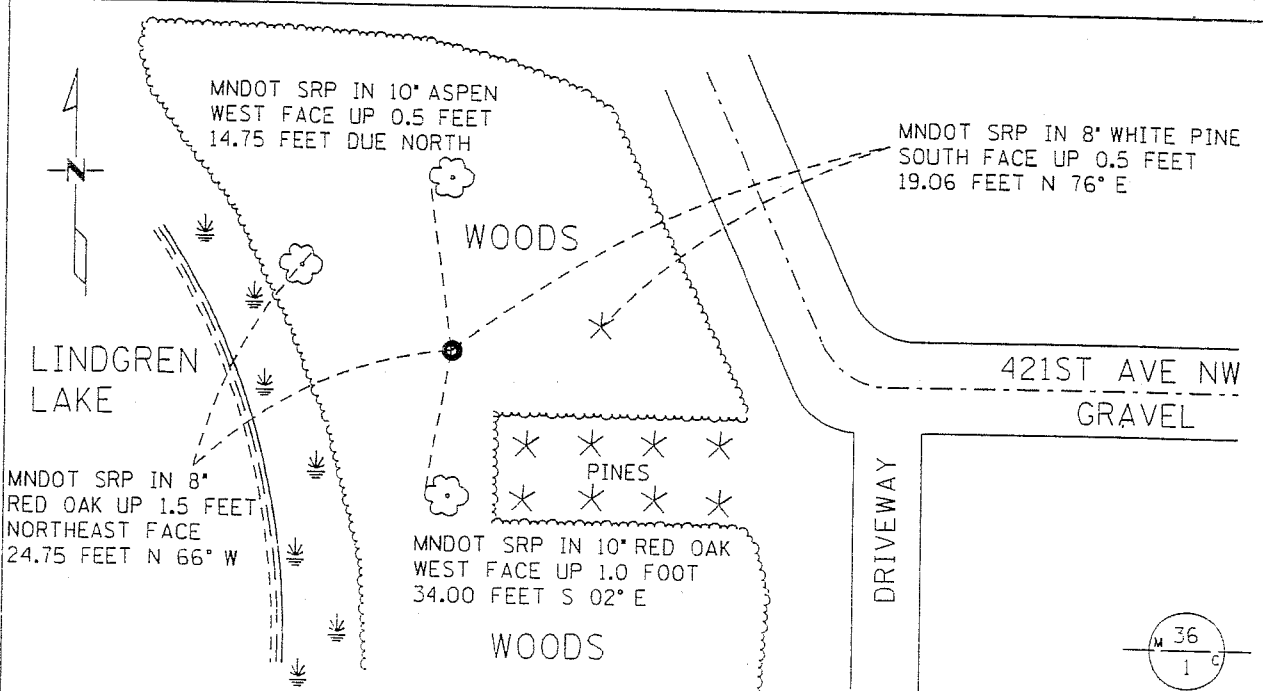
4 TH Principal Meridian, State of Minnesota, County of KANABEK

At the corner location shown on the sketch:

On 12/2001 found a NOTHING
DATE

left monument as found lowered monument removed monument (explain)

On 2/13/02 placed a CAST IRON CAP WITH BRASS CENTER ON A 30 INCH TELSPAR TUBE
DATE
DOWN 0.1 FEET



Statement of evidence for this corner location is on back of this page.

I hereby certify that this document was researched and prepared by me or under my direct supervision.

Signature [Signature] MNDOT Date 8-28-2002 License No. 40343
Title: Land Surveyor Professional Engineer County Surveyor County Engineer

Statement of Evidence: Meander Corner 23.95 Chains West of the South Quarter Corner of Section 36, Township 38 North, Range 25 West, 4th Principal Meridian, Kanabek County, Minnesota.

The original public land survey was run in 1851 by Mr. D. Higbee, Deputy Surveyor, and a wood post was used to mark the corner. Bearing ties were made to a pine and a white birch.

In 1901, John Nelson, Surveyor, made a survey in Section 36, T. 38 N., R. 25 W. for Nels Solstrom, recorded in Surveyor's Record Book 2, Page 4. Mr. Nelson found the Meander Corner. Mr. Nelson does not mention the type of monument that was found.

In 1999-2002, The Minnesota Department of Transportation made a survey around Section 36, T. 38 N., R. 25 W., and Section 1, T. 37 N., R. 25 W., to locate the existing monuments, lines of occupation, and search areas.

In December, 2001, The Minnesota Department of Transportation excavated a 3 x 6 x 2 foot hole at a computed position using the original Government Survey notes. No evidence of the corner was found.

In January, 2002, The Minnesota Department of Transportation set the monument on-line between the North Quarter Corner of Section 2 and the North Quarter Corner of Section 1, T. 37, R. 25, at the proportional distance of 1582.676 feet from the North Quarter Corner of Section 1, T. 37, R. 25. The Minnesota Department of Transportation set a cast iron cap, with a brass center, on a 30-inch long telespar tube to mark the corner. New bearing ties were established as shown on the front of this Certificate. The Minnesota Department of Transportation accepts this position as the correct location for the corner.

For details and survey analysis, contact the Minnesota Department of Transportation District Surveys Office in Baxter, Minnesota.