

KANABEC COUNTY RECORDER  
Filed 8-28-02 at 12p M  
Rhonda J. Olson County Recorder  
By L. Helmbeck Deputy

# CERTIFICATE OF LOCATION OF GOVERNMENT CORNER

MEANDER CORNER ON EAST LINE of Section 35, Township 38N, Range 25W

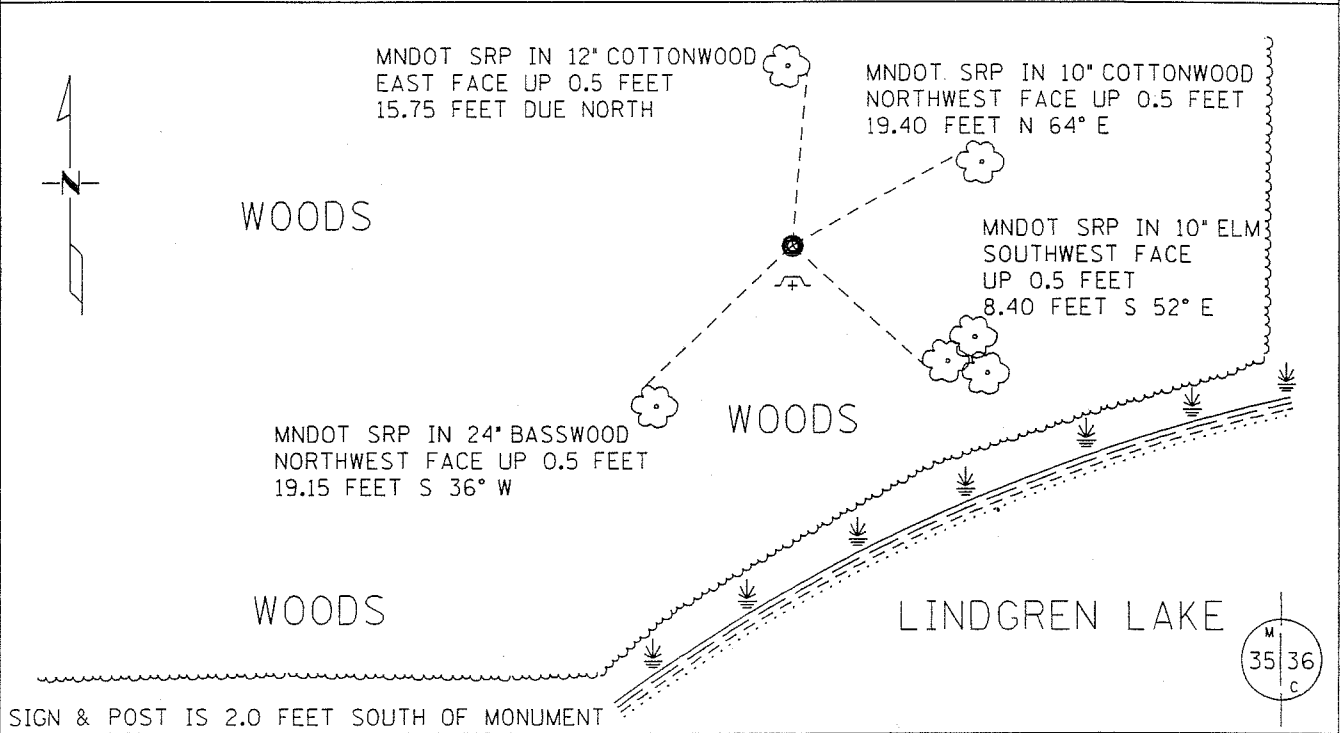
4 TH Principal Meridian, State of Minnesota, County of KANABEC

At the corner location shown on the sketch:

On 11/24/99 found a NOTHING  
DATE

left monument as found  lowered monument  removed monument (explain)

On 2/13/02 placed a CAST IRON CAP WITH BRASS CENTER ON A 30 INCH TELSPAR TUBE  
DATE  
FLUSH WITH GROUND. MONUMENT IS 135 FEET +/- NORTH OF LINDGREN LAKE



Statement of evidence for this corner location is on back of this page.

I hereby certify that this document was researched and prepared by me or under my direct supervision.

Signature [Signature] MNDOT Date 8-28-2002 License No. 40343  
Title:  Land Surveyor  Professional Engineer  County Surveyor  County Engineer

**Statement of Evidence:** Meander Corner 33.50 Chains South of the East Quarter Corner of Section 35, Township 38 North, Range 25 West, 4<sup>th</sup> Principal Meridian, Kanabec County, Minnesota.

The original public land survey was run in 1851 by Mr. D. Higbee, Deputy Surveyor, and a wood post was used to mark the corner. Bearing ties were made to a pine and a burr oak.

In 1901, John Nelson, Surveyor, made a survey in Section 36, T. 38 N., R. 25 W., for Nels Solstrom, recorded in Surveyor's Record Book 2, Page 4. Mr. Nelson established the West line of Section 36. Mr. Nelson does not say what was done for the Meander Corner on the West line of Section 36.

In 1999-2002, The Minnesota Department of Transportation made a survey around Sections 35 and 36, T. 38 N., R. 25 W., to locate the existing monuments, lines of occupation, and search areas. This corner falls near the remains of an old fence line north and south.

In December, 2001, The Minnesota Department of Transportation excavated a 4 x 4 x 3 foot hole, and also probed into the ground 1 ½ feet, within a 25 foot diameter circle, at a computed proportioned position using the original Government Survey notes. No evidence of the corner or its accessories was found.

In January, 2002, The Minnesota Department of Transportation set a monument on an extended line between the Northeast Corner of Section 35 and the East Quarter Corner of Section 35, T. 38, R. 25, at the proportional distance of 4808.3836 feet from the Northeast Corner of Section 35, T. 38, R. 25. The Minnesota Department of Transportation set a cast iron cap, with a brass center, on a 30-inch long telespar tube, to mark the corner. New bearing ties were established as shown on the front of this Certificate. The Minnesota Department of Transportation accepts this position as the correct location for the corner.

For details and survey analysis, contact the Minnesota Department of Transportation District Surveys Office in Baxter, Minnesota.