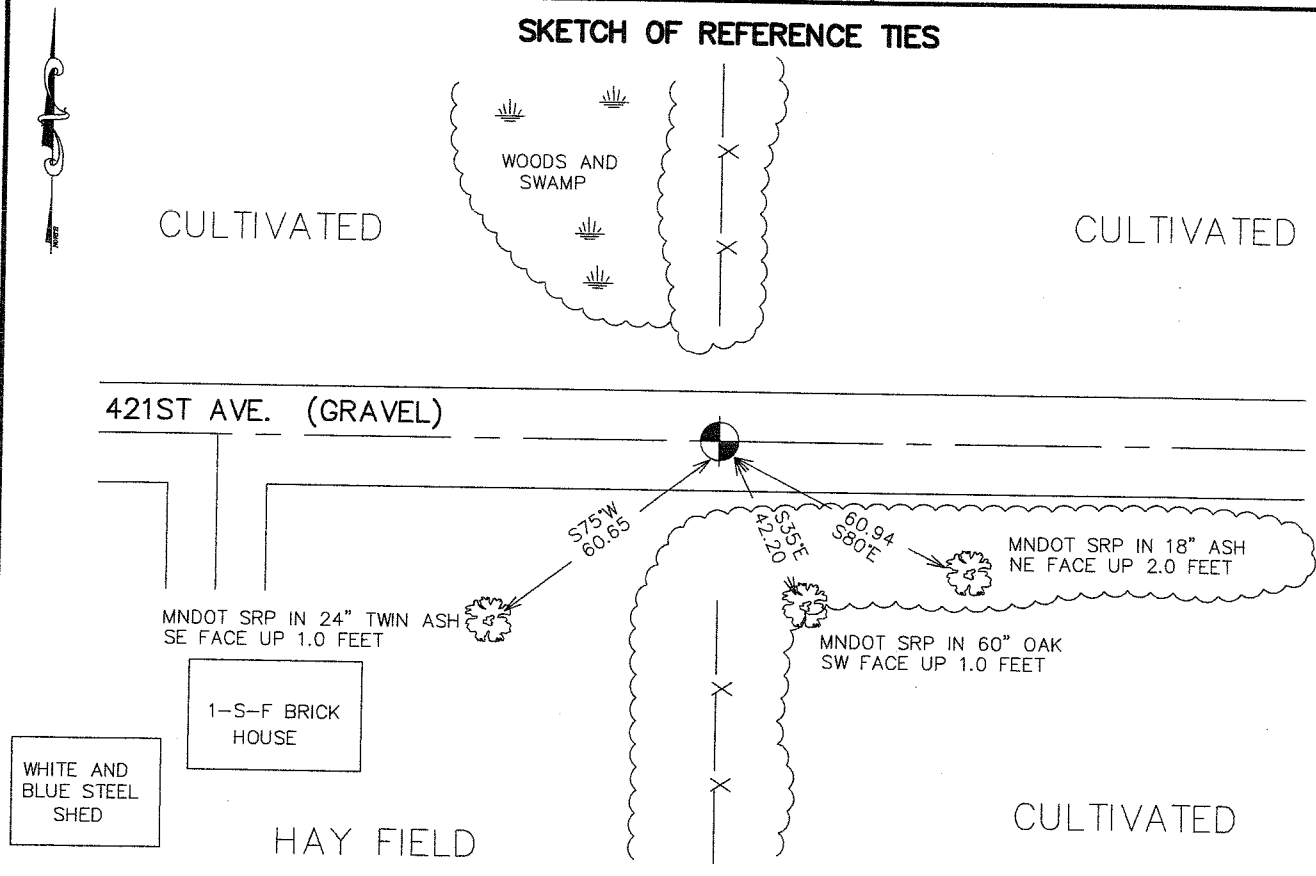


CERTIFICATE OF LOCATION OF GOVERNMENT CORNER

SOUTH QUARTER Corner of Section 35, Township 38, Range 25, 4TH P.M.
STATE OF MINNESOTA, County of KANABEC

<p>At the corner location shown on the sketch: FOUND THIS MONUMENT AND ESTABLISHED G.P.S. COORDINATES ON ITS LOCATION.</p>	<p>Kanabec County U.S. Survey Feet Coordinates NAD 1983, HARN 1996 Adjustment Obtained by RTK GPS Observation Northing= <u>101076.59</u> Easting= <u>367191.81</u> Note: NAD 1983, HARN 1996 Adjustment coordinates are NOT compatible with NAD 1983 coordinates Note: 1 Meter=3937/1200 U.S. Survey Feet</p>
--	---

SKETCH OF REFERENCE TIES



Statement of evidence relative to this corner location is on back of page.

I hereby certify that this document and the data contained herein was prepared by me or under my direct supervision.

Ernest Reed
Signature

5-02-2007
Date

Registration No. Minn No 9808

Land Surveyor, Professional Engineer
 County Surveyor, County Engineer

OFFICE OF THE COUNTY RECORDER

County of _____

I hereby certify that this document was filed in the County Recorder's office at _____ M. on the _____ day of _____ A.D., 20____

County Recorder _____
BY _____ Deputy

DOCUMENT NO. _____

SOUTH QUARTER CORNER SECTION 35, T38, R25

STATEMENT OF EVIDENCE

The original public land survey was run in 1851 by Mr. D. Higbee, Deputy Surveyor, and a wood post was used to mark the corner. Bearing ties were made to a bur oak and a black ash tree.

In 1934, The Minnesota Department of Transportation shows the South Quarter Corner of Section 35, T. 38 N., R 25 W., to be assumed at the intersection of two fence lines and centerline of a road west, in Book No. 24, Page 227, of Alignment for S.P. 56-110, Ogilvie, Minn. Lane. Ties, station 0+00 to station 413+ 10.6.

In 1999-2002, The Minnesota Department of Transportation made a survey around Section 35, T. 38 N., R. 25 W., and Section 2, T. 37 N., R. 25 W., to locate the existing monuments, lines of occupation, and search areas. This corner falls "near the intersection of a Township Road, (421 5t Ave.), and fence lines North and South.

On November 22, 1999, The Minnesota Department of Transportation excavated a 4 x 8 x 1.0 foot hole at the intersection of road and fence lines A 6 x 6 x 24 inch sandstone was recovered, down 0.3 feet.

In Jan. 2002, The Minnesota Department of Transportation set a 3/4 x 24 inch iron pin 0.10 feet south of the stone, for magnetic detection. New bearing ties were established to the stone, as shown on the front of this Certificate. The Minnesota Department of Transportation accepts this position as the correct location for the corner.

For details and survey analysis, contact the Minnesota Department of Transportation District Surveys Office in Baxter, Minnesota.

In April 2003 E.G. Rud and Sons established Kanabec County Coordinates on this position using G.P.S. equipment.